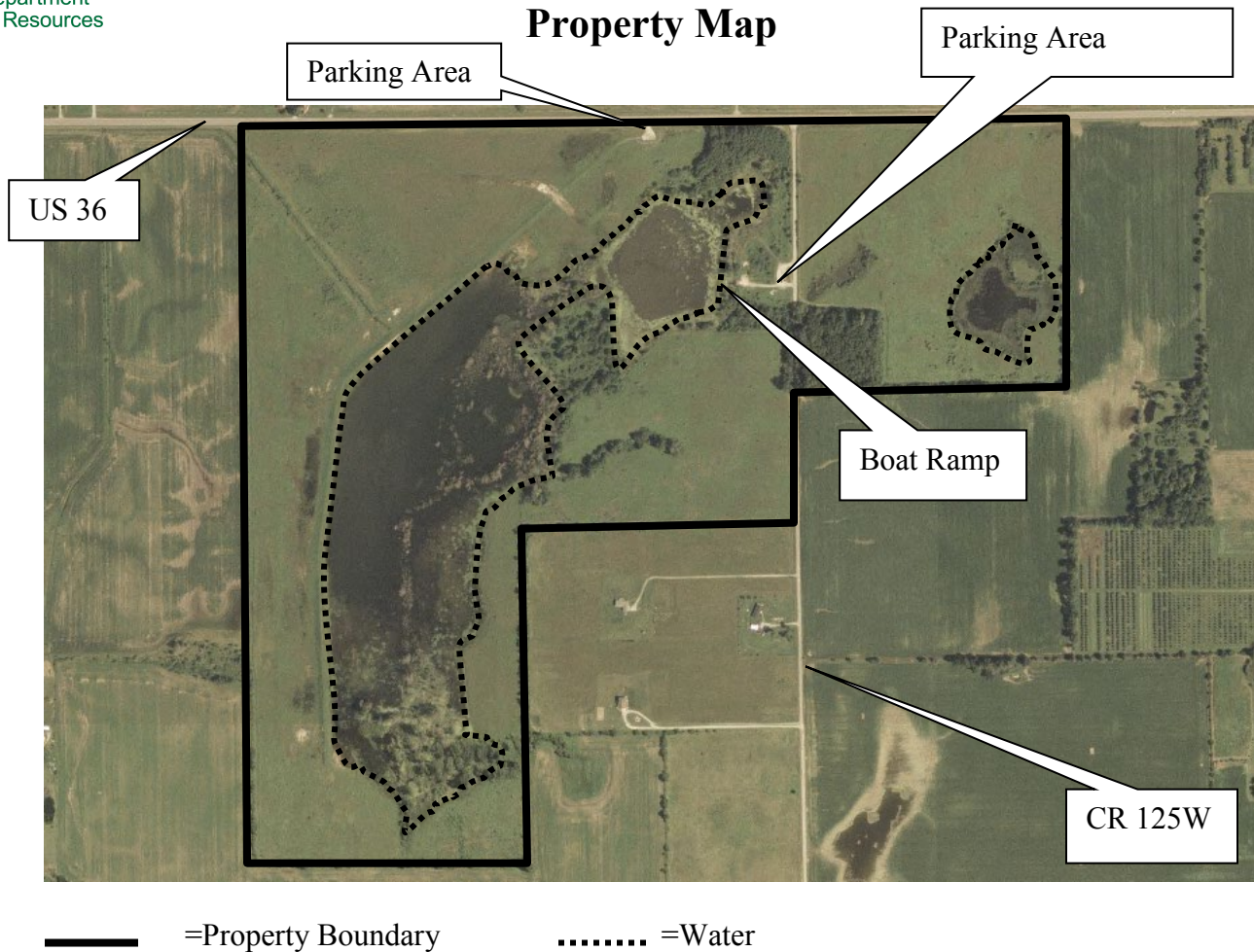


Indiana Department of Natural Resources
Province Pond Wetland Conservation Area
Property Map



ALL waterfowl hunting opportunities for opening weekend of Regular Waterfowl Season on PPWCA (this includes Charlie's Marsh) will be allocated by a pre-season drawing. Drawing will be available on the DNR website.

PPWCA is not a designated dog training area. Dog running (Feb 1st – Oct 25th) and dog training are not allowed.

Electric motors only.

Camping, Fires, Off-Road Vehicles, or Horses are not permitted on PPWCA.

Questions? Call: Roush Fish and Wildlife Area at 260-468-2165