

---

## 2024 Spring Wild Turkey Draw Atterbury Fish & Wildlife Area

This page includes information and instructions for those interested in or selected to participate in a 2024 Indiana Wild Turkey Hunt Draw. It is important to note that areas participating in reserve hunts are managed by various agencies and may have unique restrictions that each hunter must follow. Please read each area's information packet carefully before pursuing a hunt.

### Applying:

The application period for the 2024 Wild Turkey Draw Hunt is Feb. 19, 2024, to March 17, 2024. Late applications will not be accepted. You must obtain a valid hunting license and Game Bird Habitat stamp for spring turkey hunting prior to applying. Each hunter is eligible to select one hunt date from any participating property when applying. There are no age restrictions on applying. Youth hunters may apply if they are properly licensed to hunt spring turkey.

### Restrictions:

#### Allowed Equipment:

- A 410 caliber and 10-, 12-, 16-, 20-, or 28-gauge shotgun loaded with pellets of size No. 4, 5, 6, 7, or 7½. Shot sizes smaller than size 7½ must be made of Tungsten Super Shot or equivalent pellet density only, such as Tungsten Super Shot 9 and 10.
- A muzzleloading shotgun not smaller than 20-gauge and not larger than 10-gauge, loaded with pellets of size 4, 5, 6, 7, 7½, and Tungsten Super Shot 9 and 10. Combination loads using shot sizes other than these are illegal.
- A bow and arrow or crossbow.

#### Bag Limit:

- The bag limit is one bearded or male turkey for the spring season.

#### Hunting Hours:

- All DNR properties managed by the Division of Fish & Wildlife have spring season hunting hours one-half hour before sunrise until noon for properties on CT and until 1 p.m. for properties on ET. All others are required to stay out of the field until after this time.

### Hunt Information:

To claim your reservation, you must check in at the property office before 5:30 a.m. ET on the first day of your hunt. If you do not claim your reservation by the times indicated above, your spot will be given to another hunter or forfeited entirely. You may NOT bring a hunting partner with you during your hunt; however, you may bring a non-hunting observer or assistant. All non-hunting partners who assist in calling in turkeys must be properly licensed.

Hunters must stop hunting by 1 p.m. ET and be out of the field by 2 p.m. ET.

**Area Information:**

Atterbury Fish & Wildlife Area (FWA) provides quality outdoor recreational opportunities while maintaining 4,950 acres of upland game habitat, marsh, running creeks, and shallow impoundments. Each year, hunters successfully harvest several species including deer, turkey, pheasant, and other upland game.

The first five days of spring turkey season at Atterbury FWA are by draw only. When applying to the 2024 Wild Turkey Atterbury FWA hunt, you may choose from two hunt periods:

- Wednesday – Friday: April 24, 2024 – April 26, 2024
- Saturday – Sunday: April 27, 2024 – April 28, 2024

The property has 7 turkey hunting units available and will draw 7 hunters to hunt for each period (Only one hunter will be assigned to each unit). If you are successful in drawing for a hunt at Atterbury FWA, you must check in at the property office, located at 7970 S. Rowe Street, Edinburgh, IN 46124-1456, before 5:30 a.m. ET on each day of your hunt to draw for your location. If you do not claim your reservation by the times indicated above, your spot will be given to another hunter or forfeited entirely. Once you have claimed your reservation at the property office, you must sign in at the office each day of your hunt drawing for location that day. If you are not successful in the pre-season drawing to hunt at Atterbury FWA, you may still attend the standby drawing held at 5:30 a.m. ET daily. Any reservations left unfilled will be drawn again and given to the standby crowd.

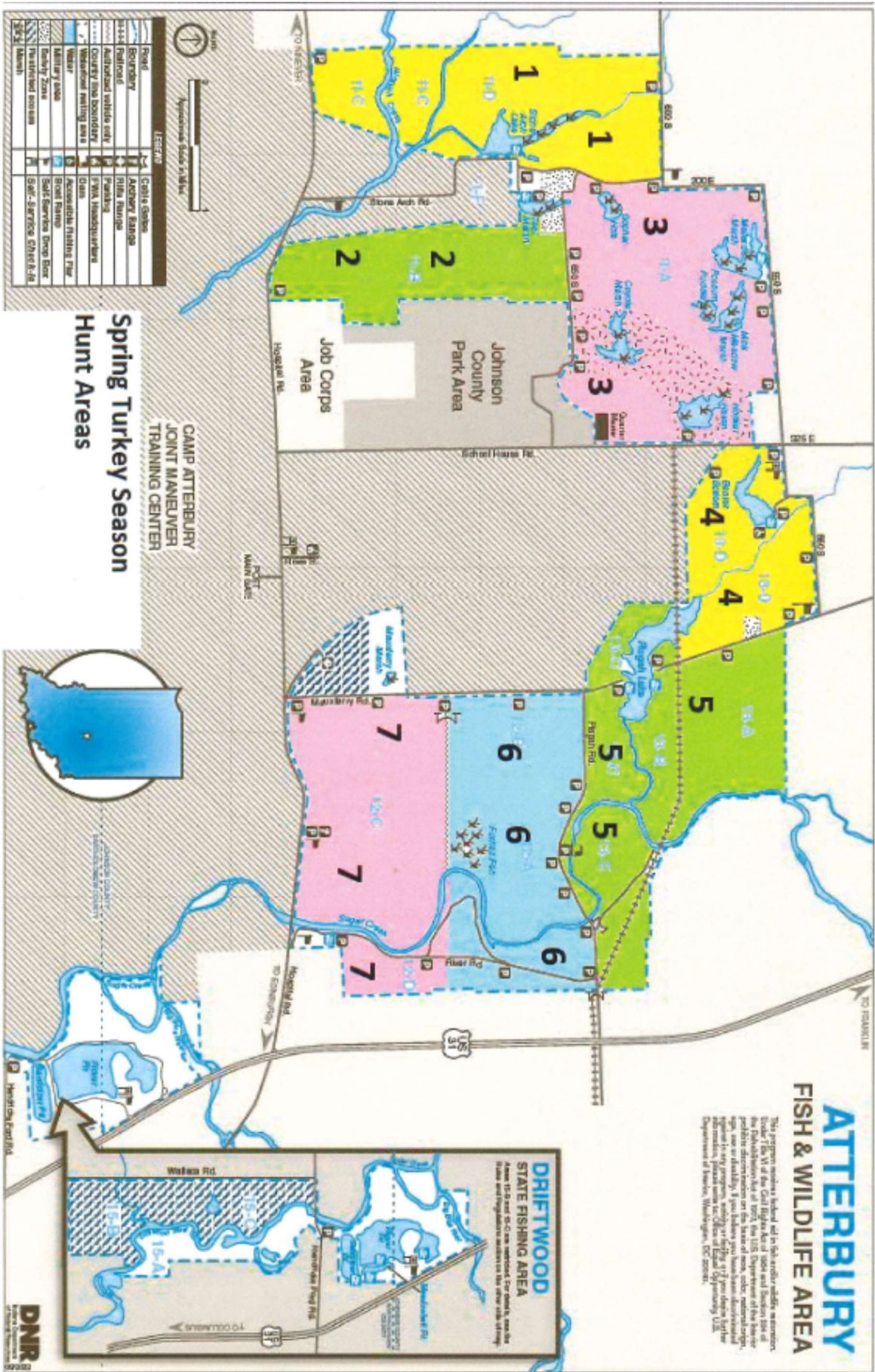
After the first five days of spring turkey season, in-person drawings will be held daily at 5:30 a.m. ET from April 29 – May 12, 2024, for each of the 7 available units.

**Contact:**

If you have further questions, please contact the Atterbury property office at 812-526-2051.

# ATTERBURY FISH & WILDLIFE AREA

This program provides habitat and fish and wildlife resources for the Atterbury Fish and Wildlife Area. The program provides protection and distribution on the basis of such other information, maps, and/or data as may be available. The program is administered by the Department of Natural Resources, Division of Wildlife, Washington, DC 20711.



LEGEND	
	CRUISE ZONES
	ACQUACRY ZONES
	WATER ZONES
	WATER ZONES
	WATER ZONES
	WATER ZONES
	WATER ZONES
	WATER ZONES
	WATER ZONES
	WATER ZONES
	WATER ZONES
	WATER ZONES

**CAMP ATTERBURY  
JOINT MANEUVER  
TRAINING CENTER**

**Spring Turkey Season  
Hunt Areas**

**DRIFTWOOD  
STATE FISHING AREA**

Area 15.0 and 15.1 are located on the north side of the Mississippi River. The area is located on the north side of the Mississippi River. The area is located on the north side of the Mississippi River.