

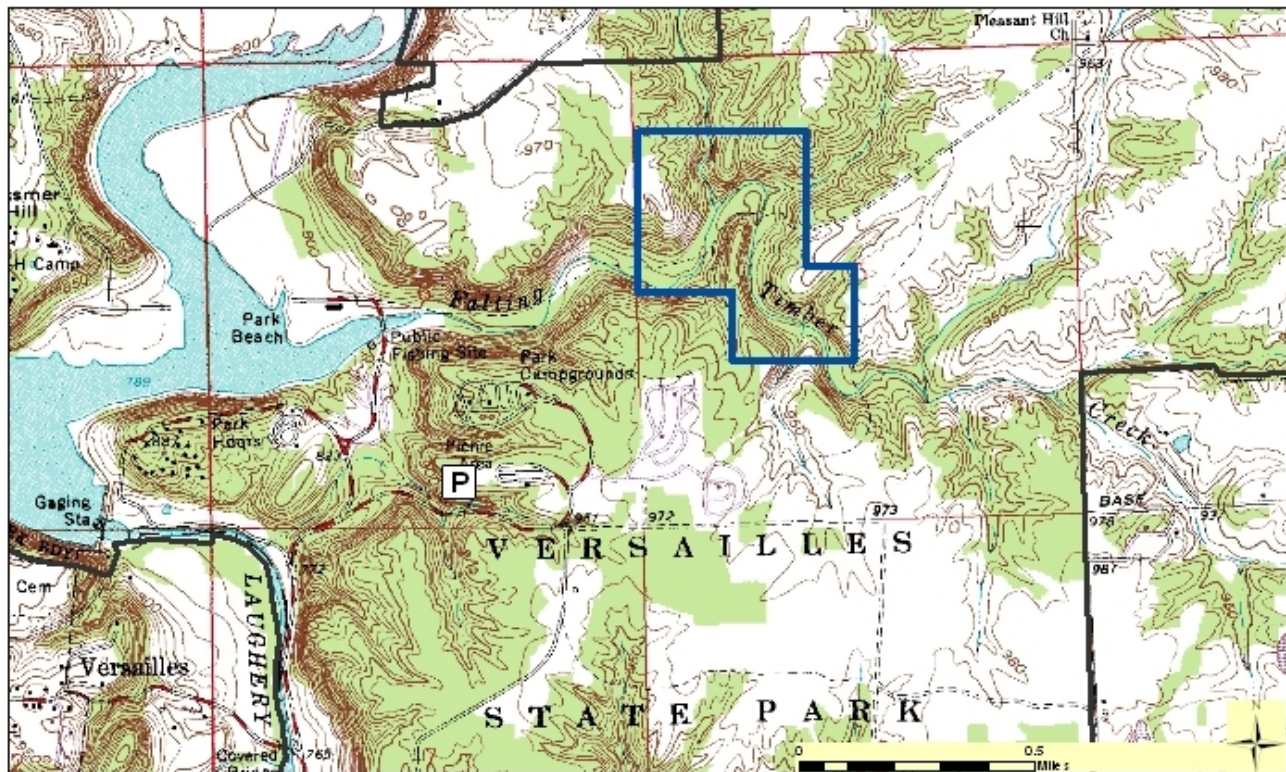
# Falling Timber Nature Preserve

County: Ripley                      Size: 109 acres  
Ownership: State Parks - IDNR



## Location and Access

**Parking and trail.** Falling Timber is located within Versailles State Park. Take US 421 to Versailles. Turn east onto SR 50 and enter the park. Hiking Trail 2, near the park campgrounds, passes through this area.



## Description:

The predominant natural community types in the preserve are mesic and dry-mesic upland forests, and riparian forest. Falling Timber Creek is very scenic and filled with fossil-laden rock.

## Further Information:

Versailles State Park, Box 205, Versailles, IN 47042. (812) 689-6424. [www.in.gov/parklake/](http://www.in.gov/parklake/)  
Division of Nature Preserves Southeast Regional Ecologist, Jason Larson: [jl Larson@dnr.in.gov](mailto:jl Larson@dnr.in.gov)