

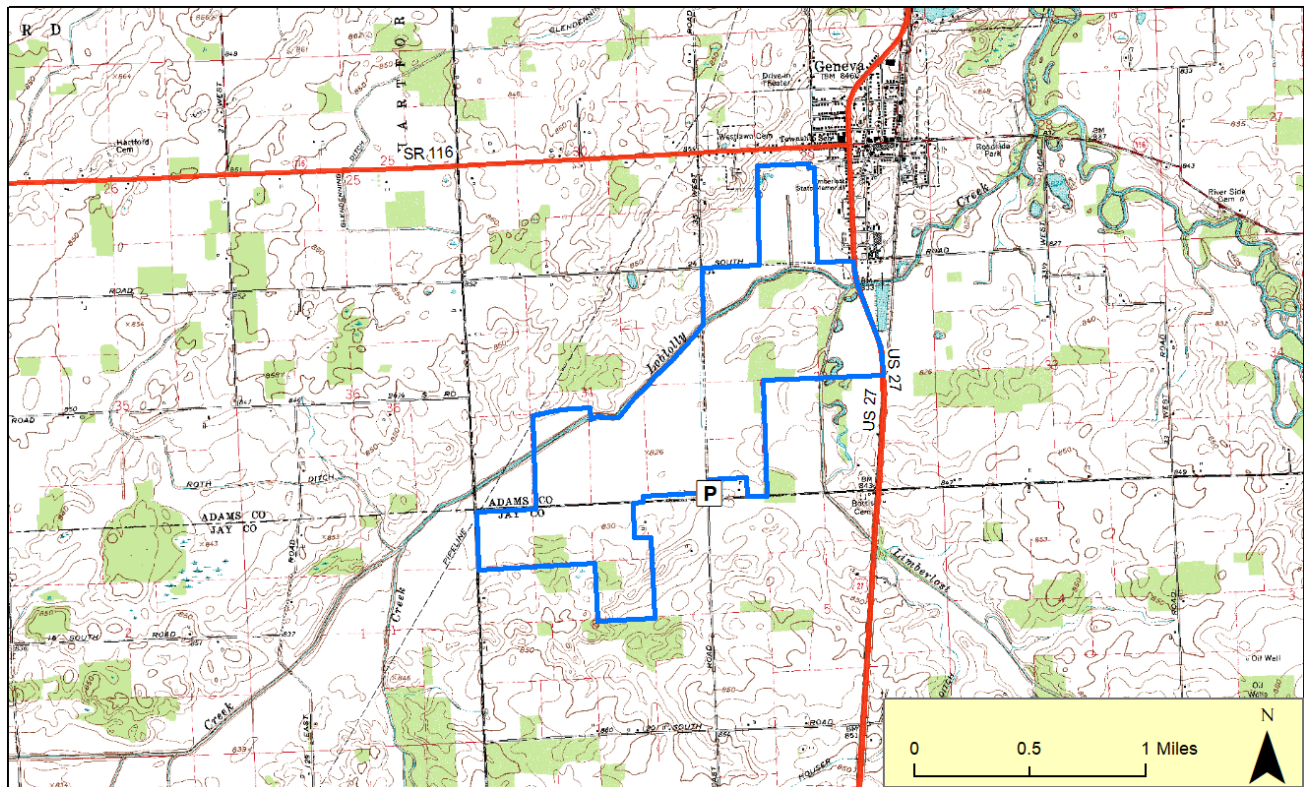
# Limberlost Swamp Nature Preserve

County: Adams, Jay      Size: 719.23 acres  
Ownership: Nature Preserves - IDNR



## Location and Access

**Parking and trail.** From Geneva head south on Main Street / US Hwy 27 S for 1.5 miles. Turn west onto W 1200 S / E 900 N / County Rd 10 S, a small parking lot will be on the right after 0.7 miles. A trail leads into the preserve, it totals over three miles round trip.



The main features of this site include early successional emergent wetlands with upland and floodplain forest. Also present are tree plantings and shrublands that provide mid-successional habitat.

The Limberlost Swamp is an 800+ acre wetland restoration straddling the Adams and Jay County line. It encompasses portions of the Loblolly Creek

## Further Information:

Division of Nature Preserves East Central Regional Ecologist, Ryan Smith: [rysmith1@dnr.in.gov](mailto:rysmith1@dnr.in.gov)