



# ***HIV/AIDS Epidemiologic Profile Indiana 2018***

---

Indiana State Department of Health

Daniel Hillman, Epidemiologist

March 2019



# Definitions

---

- **Prevalence**-The total number of cases of a disease in persons not known to have died in a given population at a particular time. **Includes persons that have moved to Indiana from another State.**
- **Diagnosed**-The number of new cases in a population within a given time period. **Reporting delays can affect this report.**
- **Rate**-Number of actual cases divided by the number at risk.
- **HIV**-Human Immunodeficiency Virus
- **AIDS**-Acquired Immunodeficiency Syndrome
- **HIV/AIDS**-Having either HIV or AIDS
- **Mortality**-The total number of deaths in a given population at a given time
- **Other**- Includes categories not represented – Only percentages greater than or equal to 5% will be further broken down for analysis



# Definitions

---

- **MSM**-Men having Sex with Men
- **PWID**-Persons Who Inject Drugs
- **MSM/PWID**-Men having Sex with Men and Persons Who Inject Drugs
- **Heterosexual or Hetero**-persons who report specific heterosexual contact with a person with, or at increased risk for, HIV infection
- **MSM/Heterosexual**-men who report sexual contact with both men and women
- **PWID/Heterosexual**-Heterosexual contact with an intravenous drug user
- **Other**-Populations too small to report separately therefore combined into one group.
- **NIR**-No Identified Risk



# *HIV/AIDS Prevalence 2018*

---

## *Prevalence Numbers (Rates) for HIV and AIDS, 2016-2018*

Disease	<b>2018 Number(Rate)</b>	<b>2017 Number(Rate)</b>	<b>2016 Number(Rate)</b>
<b>HIV</b>	6,357 (95.4)	6,257 (94.5)	5,981 (90.4)
<b>AIDS</b>	6,351 (95.3)	6,378 (96.3)	6,194 (93.6)
<b>HIV/AIDS</b>	12,708 ( <b>190.6</b> )	12,635 ( <b>190.9</b> )	12,175 ( <b>183.9</b> )

Source: Indiana HIV/AIDS Surveillance Database  
Rates based on U.S. Census, 2017



## *Prevalence Rates of Persons Living with HIV/AIDS by Sex, 2016-2018*

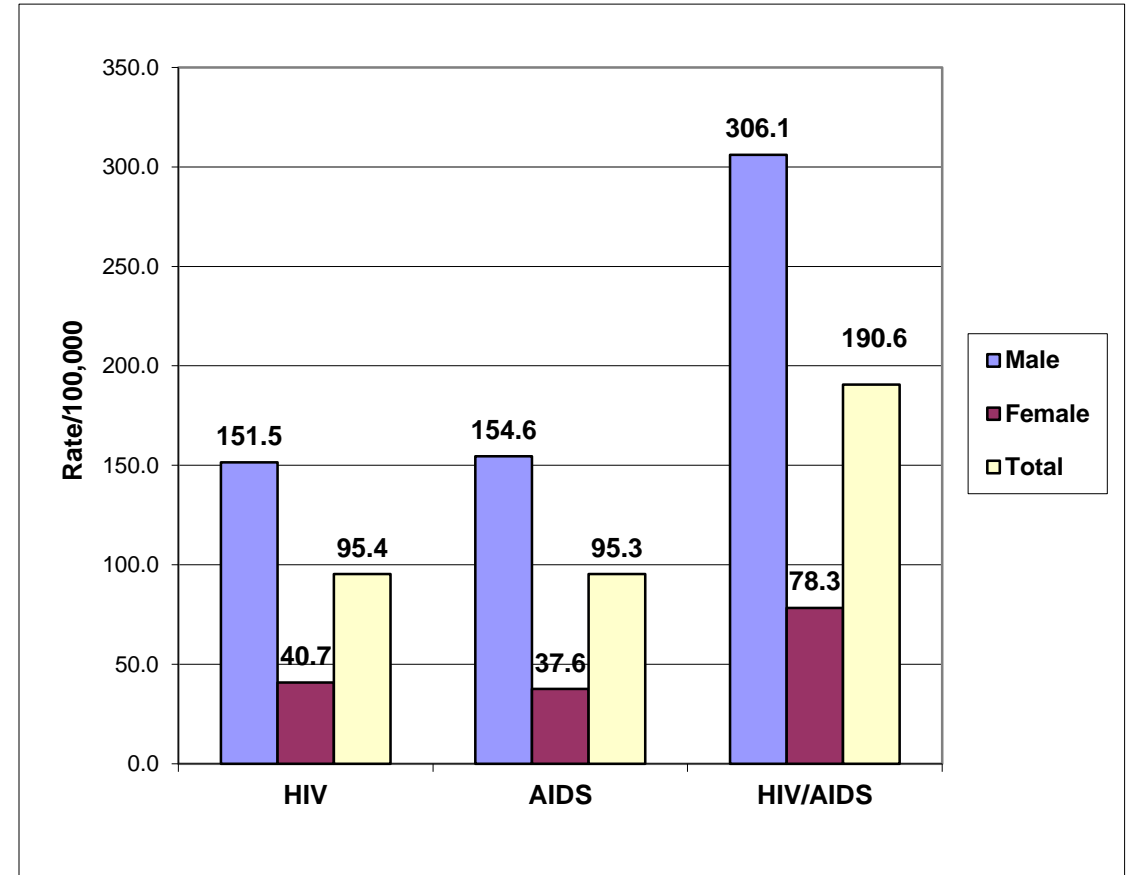
---

Sex	2018 Rate	2017 Rate	2016 Rate
<b>Male</b>	306.1	308.4	297.8
<b>Female</b>	78.3	76.7	73.3
<b>Total</b>	<b>190.6</b>	<b>190.9</b>	<b>183.9</b>

Source: Indiana HIV/AIDS Surveillance Database  
Rates based on U.S. Census, 2017

# Prevalence Rates of Persons Living with HIV/AIDS by Sex, 2018

Sex	Number	Percent	Rate
Male	10,061	79.2	306.1
Female	2,647	20.8	78.3
<b>Total</b>	<b>12,708</b>	<b>100.0</b>	<b>190.6</b>



Source: Indiana HIV/AIDS Surveillance Database  
Rates based on U.S. Census, 2017

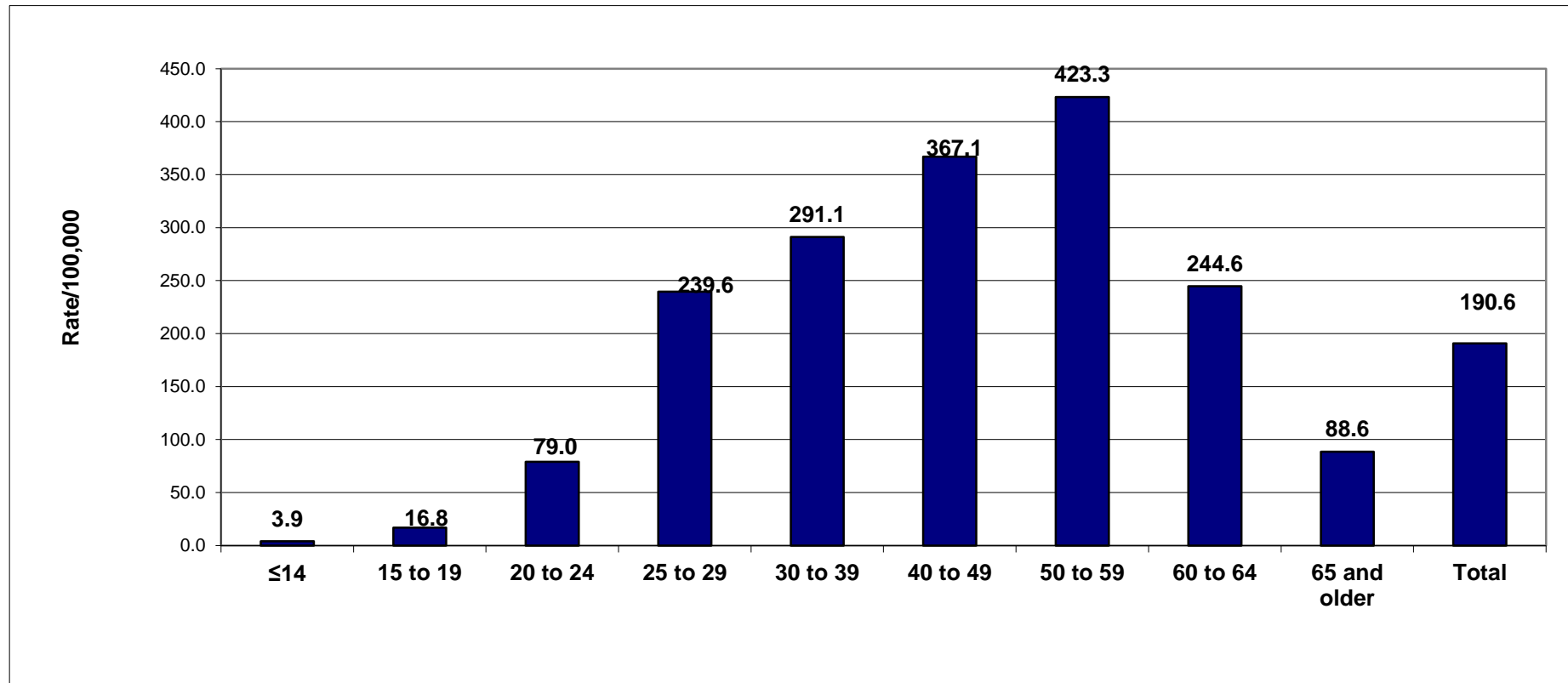
## *Prevalence Rates of Persons Living with HIV/AIDS by Age, 2016-2018*

<b>Age Group</b>	<b>2018 Rate</b>	<b>2017 Rate</b>	<b>2016 Rate</b>
<b>≤14</b>	3.9	3.5	4.2
<b>15-19</b>	16.8	16.0	12.7
<b>20-24</b>	79.0	80.6	89.5
<b>25-29</b>	239.6	253.5	235.5
<b>30-39</b>	291.1	283.6	271.6
<b>40-49</b>	367.1	372.9	385.7
<b>50-59</b>	423.3	417.5	395.5
<b>60-64</b>	244.6	239.8	214.2
<b>65+</b>	88.6	82.2	69.6
<b>Total</b>	<b>190.6</b>	<b>190.9</b>	<b>183.9</b>

Source: Indiana HIV/AIDS Surveillance Database  
Rates based on U.S. Census, 2017



# Prevalence Rates of Persons Living with HIV/AIDS by Age, 2018



Source: Indiana HIV/AIDS Surveillance Database  
Rates based on U.S. Census, 2017

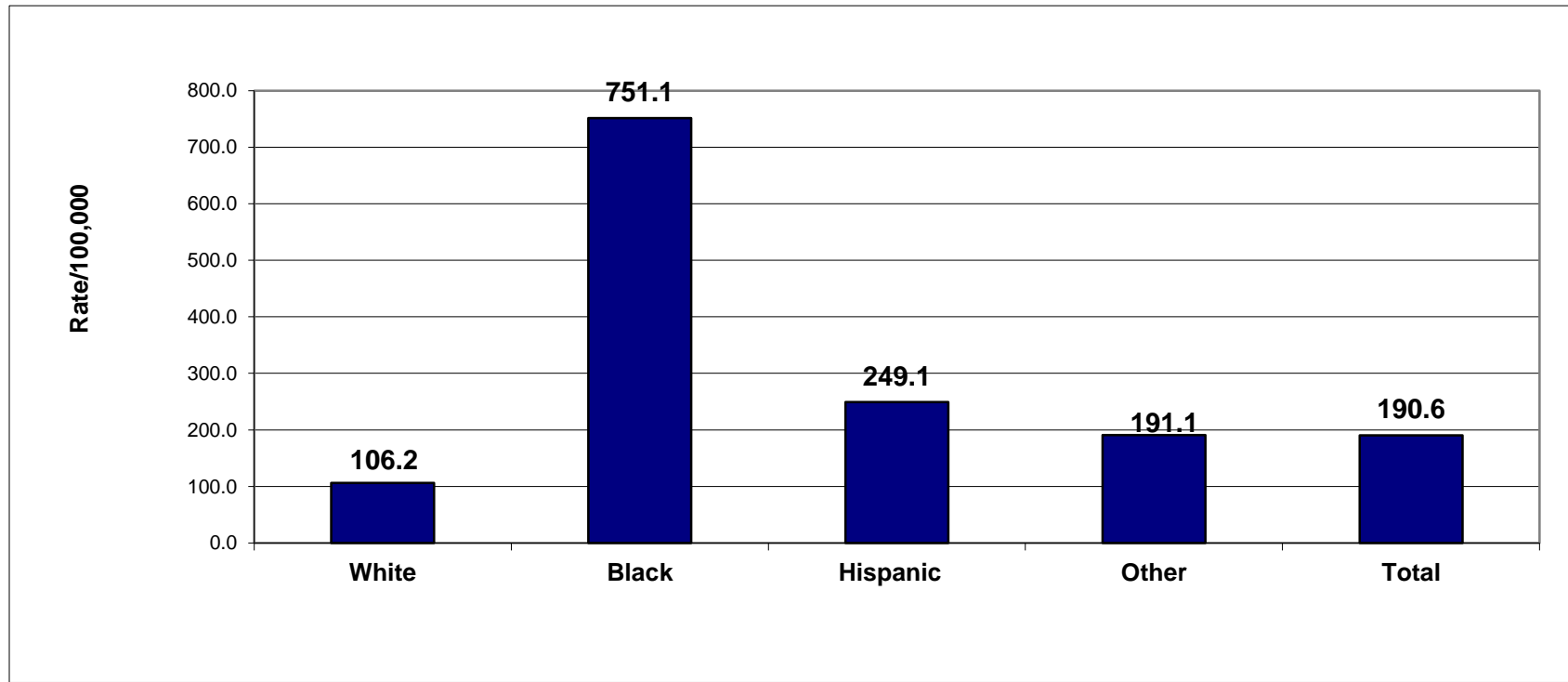


## *Prevalence of Persons Living with HIV/AIDS by Race/Ethnicity, 2018*

---

Race/Ethnicity	Number	Percent	Rate
<b>White</b>	6,042	47.5	106.2
<b>Black</b>	4,881	38.4	751.1
<b>Hispanic</b>	1,162	9.1	249.1
<b>Other</b>	623	5.0	191.1
<b>Total</b>	<b>12,708</b>	<b>100.0</b>	<b>190.6</b>

# *Prevalence Rates of Persons Living with HIV/AIDS by Race/Ethnicity, 2018*

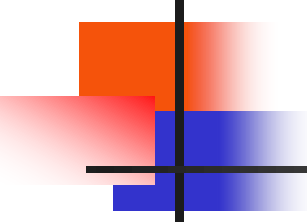


Source: Indiana HIV/AIDS Surveillance Database  
Rates based on U.S. Census, 2017

# Prevalence Rates (Percents) of Persons Living with HIV/AIDS by Race/Ethnicity, 2016-2018

Race/Ethnicity	2018 Rate(%)	2017 Rate(%)	2016 Rate(%)
<b>White</b>	106.2 (47.5%)	107.7 (48.4%)	106.1 (49.5%)
<b>Black</b>	751.1 (38.4%)	753.2 (38.0%)	713.6 (37.3%)
<b>Hispanic</b>	249.1 (9.1%)	255.5 (8.9%)	239.6 (8.7%)
<b>Other</b>	191.1 (5.0%)	195.7 (4.7%)	181.1 (4.5%)
<b>Total</b>	<b>190.6 (100.0%)</b>	<b>190.9 (100.0%)</b>	<b>183.9 (100.0%)</b>

Source: Indiana HIV/AIDS Surveillance Database  
Rates based on U.S. Census, 2017



## *Prevalence Rates (Percents) of Males Living with HIV/AIDS by Mode of Transmission, 2016-2018\**

Mode	2018 Rate(%)	2017 Rate(%)	2016 Rate(%)
<b>MSM</b>	176.5 (45.6%)	180.2 (46.5%)	175 (46.9%)
<b>MSM/PWID</b>	14.1 (3.7%)	14.9 (3.8%)	14.4 (3.9%)
<b>MSM/ Hetero</b>	25.3 (6.5%)	24.2 (6.3%)	22.7 (6.1%)

\*MSM, MSM/PWID, MSM/Hetero rates are based on Indiana male population (per 100,000).

## *Prevalence Rates (Percents) of HIV/AIDS by Mode of Transmission, 2016-2018\**

Mode	2018 Rate(%)	2017 Rate(%)	2016 Rate(%)
<b>PWID</b>	6.7 (3.5%)	6.9 (3.6%)	6.8 (3.7%)
<b>Heterosexual</b>	38.8 (20.4%)	37.8 (19.8%)	35.9 (19.5%)
<b>PWID/ Heterosexual</b>	7.8 (4.1%)	7.4 (3.9%)	7.2 (3.9%)
<b>Other</b>	30.9 (16.2%)	30.7 (16.1%)	29.6 (16.1%)
<b>Total Population**</b>	<b>190.6 (100.0%)</b>	<b>190.9 (100.0%)</b>	<b>183.9 (100.0%)</b>

\* Rates are based on Indiana total population (per 100,000).

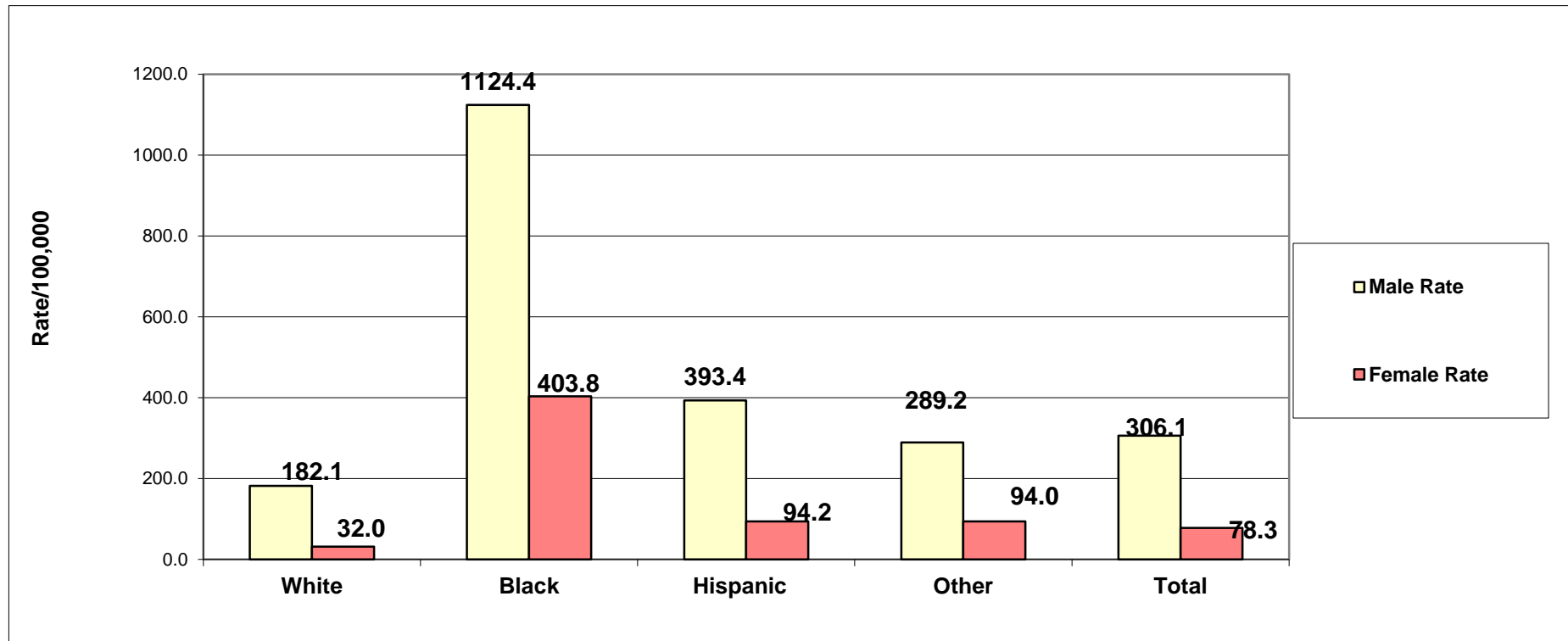
\*\*Total Population = Indiana HIV/AIDS population

# Prevalence Rates of Persons Living with HIV/AIDS by Race/Ethnicity and Sex, 2016-2018

Race/ Ethnicity	Male Rate/Year			Female Rate/Year		
	2018	2017	2016	2018	2017	2016
White	182.1	185.7	182.9	32.0	31.7	31.1
Black	1,124.4	1,134.2	1,073.9	403.8	398.9	378.6
Hispanic	393.4	405.2	380.8	94.2	93.7	87.1
Other	289.2	293.9	277.2	94.0	98.9	86.4
<b>Total</b>	<b>306.1</b>	<b>308.4</b>	<b>297.8</b>	<b>78.3</b>	<b>76.7</b>	<b>73.3</b>

Source: Indiana HIV/AIDS Surveillance Database  
Rates based on U.S. Census, 2017

# *HIV/AIDS Prevalence Rates by Race/Ethnicity and Sex, 2018*



Source: Indiana HIV/AIDS Surveillance Database  
Rates based on U.S. Census, 2017



## *Prevalence Numbers and Rates Among Males Living with HIV/AIDS by Mode of Transmission and Race/Ethnicity, 2018\**

<b>Mode</b>	<b>Black</b>		<b>Hispanic</b>		<b>White</b>		<b>Other</b>	
	Number	Rate	Number	Rate	Number	Rate	Number	Rate
<b>MSM</b>	<b>1,746</b>	(557.4)	<b>484</b>	(200.4)	<b>3,373</b>	(120.0)	<b>198</b>	(122.1)
<b>MSM/PWID</b>	<b>115</b>	(36.7)	<b>33</b>	(13.7)	<b>297</b>	(10.6)	<b>19</b>	(11.7)
<b>MSM/Hetero</b>	<b>379</b>	(121.0)	<b>78</b>	(32.3)	<b>335</b>	(11.9)	<b>38</b>	(23.4)

\*MSM, MSM/PWID, MSM/Hetero rates are based on Indiana male population (per 100,000).

## *Prevalence Numbers and Rates of HIV/AIDS by Mode of Transmission and Race/Ethnicity, 2018 Cont..\**

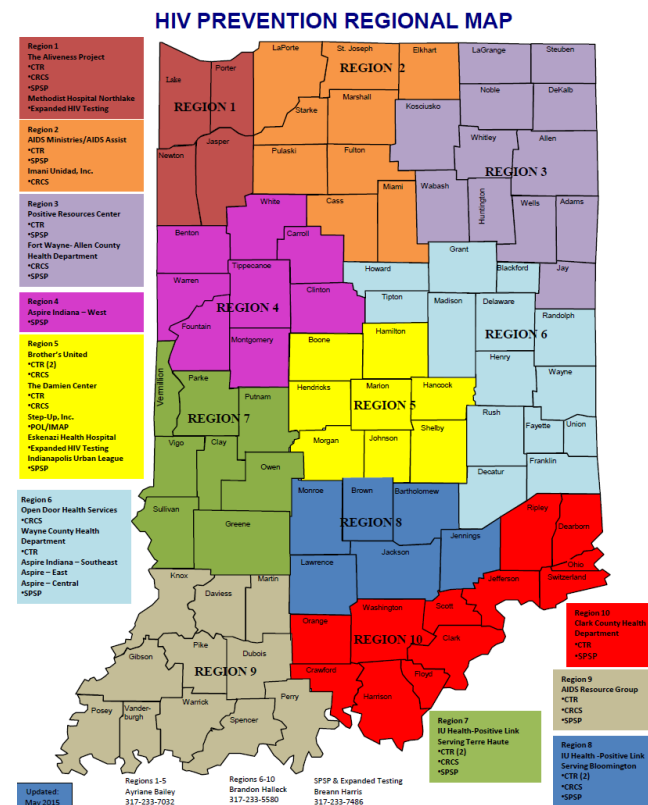
<b>Mode</b>	<b>Black</b>		<b>Hispanic</b>		<b>White</b>		<b>Other</b>	
	Number	Rate	Number	Rate	Number	Rate	Number	Rate
<b>PWID</b>	<b>130</b>	(20.0)	<b>44</b>	(9.4)	<b>254</b>	(4.5)	<b>18</b>	(5.5)
<b>Hetero</b>	<b>1,363</b>	(209.8)	<b>280</b>	(60.0)	<b>755</b>	(13.3)	<b>189</b>	(58.0)
<b>PWID/ Hetero</b>	<b>175</b>	(26.9)	<b>37</b>	(7.9)	<b>275</b>	(4.8)	<b>30</b>	(9.2)
<b>Other</b>	<b>973</b>	(149.7)	<b>206</b>	(44.2)	<b>753</b>	(13.2)	<b>131</b>	(40.2)
<b>Total Population **</b>	<b>4,881</b>	(751.1)	<b>1,162</b>	(249.1)	<b>6,042</b>	(106.2)	<b>623</b>	(191.1)

\* Rates are based on Indiana total population (per 100,000).

\*\*Total Population = Indiana HIV/AIDS population

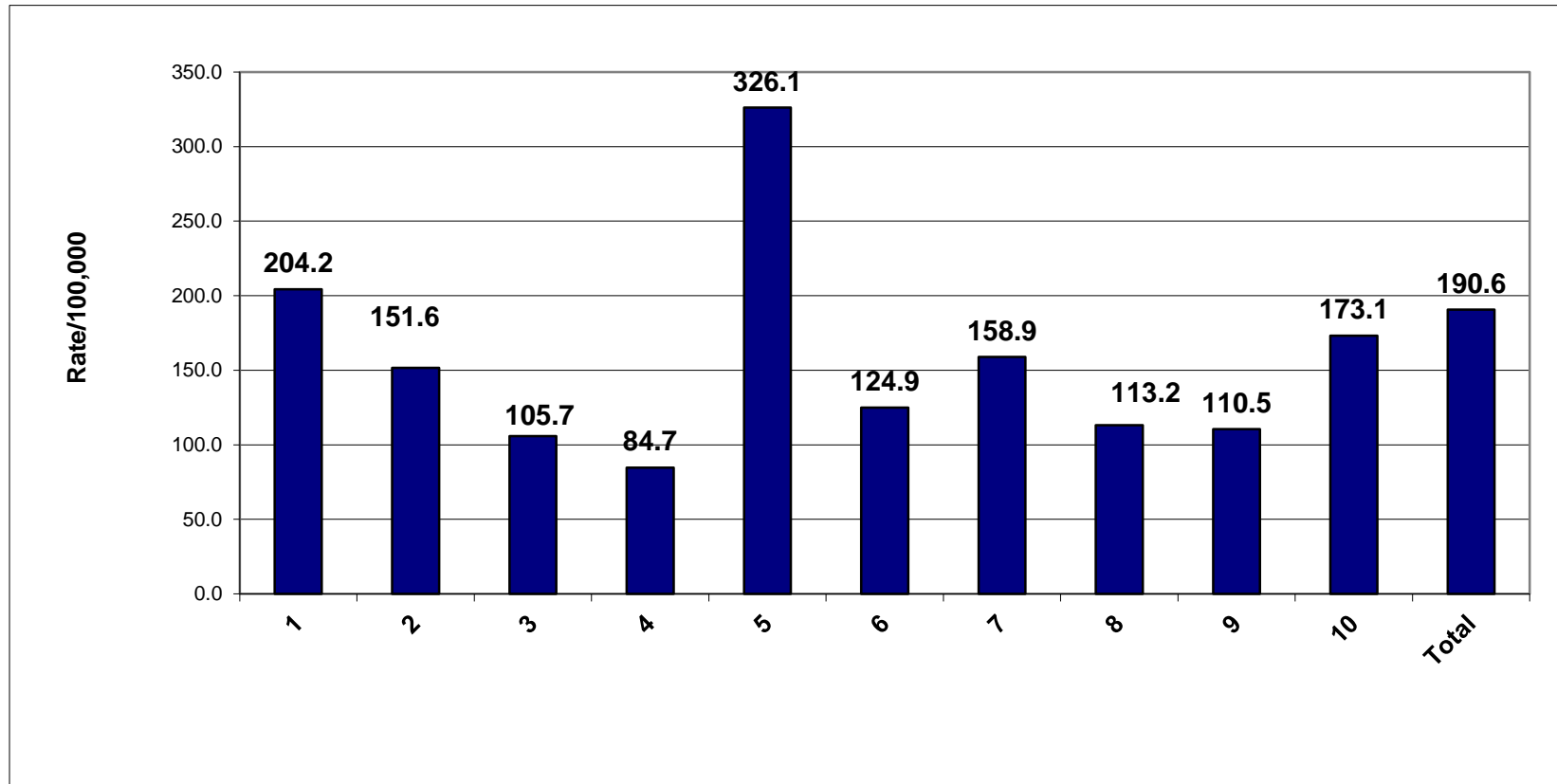
# Prevalence of Persons Living with HIV/AIDS by Health Region, 2018

Health Region	Number	Percent	Rate
<b>1</b>	1,433	11.3	204.2
<b>2</b>	1,154	9.1	151.6
<b>3</b>	848	6.7	105.7
<b>4</b>	287	2.3	84.7
<b>5</b>	6,021	47.4	326.1
<b>6</b>	820	6.5	124.9
<b>7</b>	441	3.5	158.9
<b>8</b>	409	3.2	113.2
<b>9</b>	529	4.2	110.5
<b>10</b>	766	6.0	173.1
<b>Total</b>	<b>12,708</b>	<b>100.0</b>	<b>190.6</b>



Source: Indiana HIV/AIDS Surveillance Database  
Rates based on U.S. Census, 2017

# Prevalence Rates of Persons Living with HIV/AIDS by Health Region, 2018



Source: Indiana HIV/AIDS Surveillance Database  
Rates based on U.S. Census, 2017



# *New HIV/AIDS Diagnosis 2018*

---



## *Indiana New Diagnosis Numbers (Rates) for HIV and AIDS, 2016-2018*

---

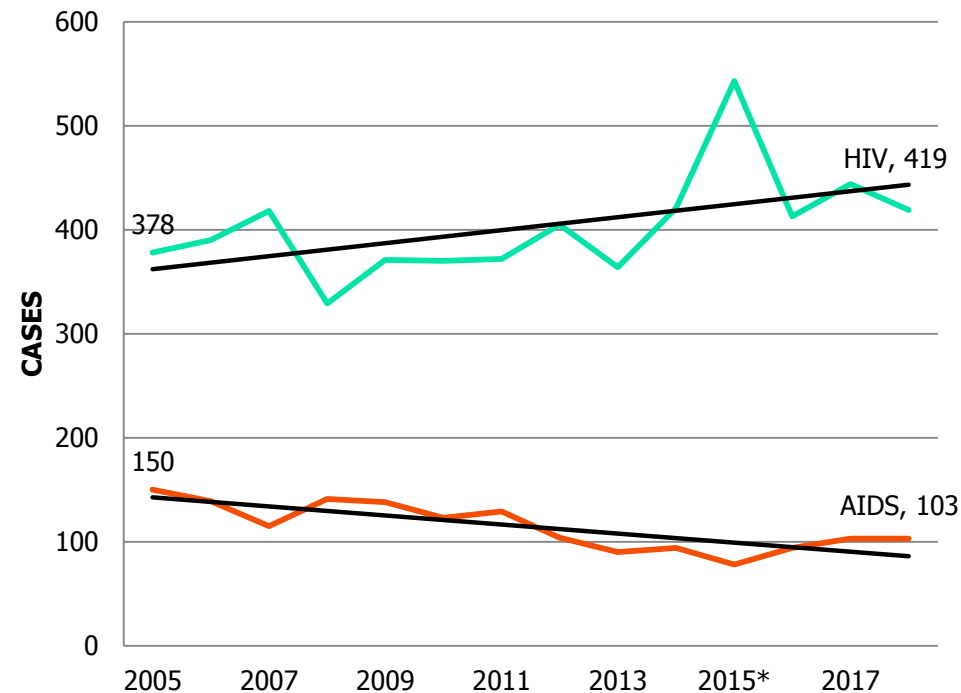
<b>Disease</b>	<b>2018 Number(Rate)</b>	<b>2017 Number(Rate)</b>	<b>2016 Number(Rate)</b>
<b>HIV</b>	419 (6.3)	444 (6.7)	413 (6.2)
<b>AIDS</b>	103 (1.5)	103 (1.6)	94 (1.4)
<b>HIV/AIDS</b>	<b>522 (7.8)</b>	<b>547 (8.3)</b>	<b>507 (7.7)</b>

# New Diagnosis Absolute Numbers for Indiana HIV/AIDS and AIDS, 2005–2018

Table1. Newly Reported Indiana HIV and AIDS Cases, Reported 2005-2018

Year	HIV		AIDS		HIV/AIDS Total
	Count	%	Count	%	
2005	378	72%	150	28%	528
2006	390	74%	139	26%	529
2007	418	78%	115	22%	533
2008	329	70%	141	30%	470
2009	371	73%	138	27%	509
2010	370	75%	123	25%	493
2011	372	74%	129	26%	501
2012	405	80%	104	20%	509
2013	364	80%	90	20%	454
2014	421	82%	94	18%	515
2015*	543	87%	78	13%	621
2016	413	78%	94	22%	507
2017	444	81%	103	19%	547
2018	419	80%	103	20%	522
Avg.	403		114		517
Std. Dev.	50		22		39
Range	(353-453)		(92-136)		(478-556)
*Significant Differences					

Figure1. Newly Reported Indiana HIV and AIDS Cases, Reported 2005-2018



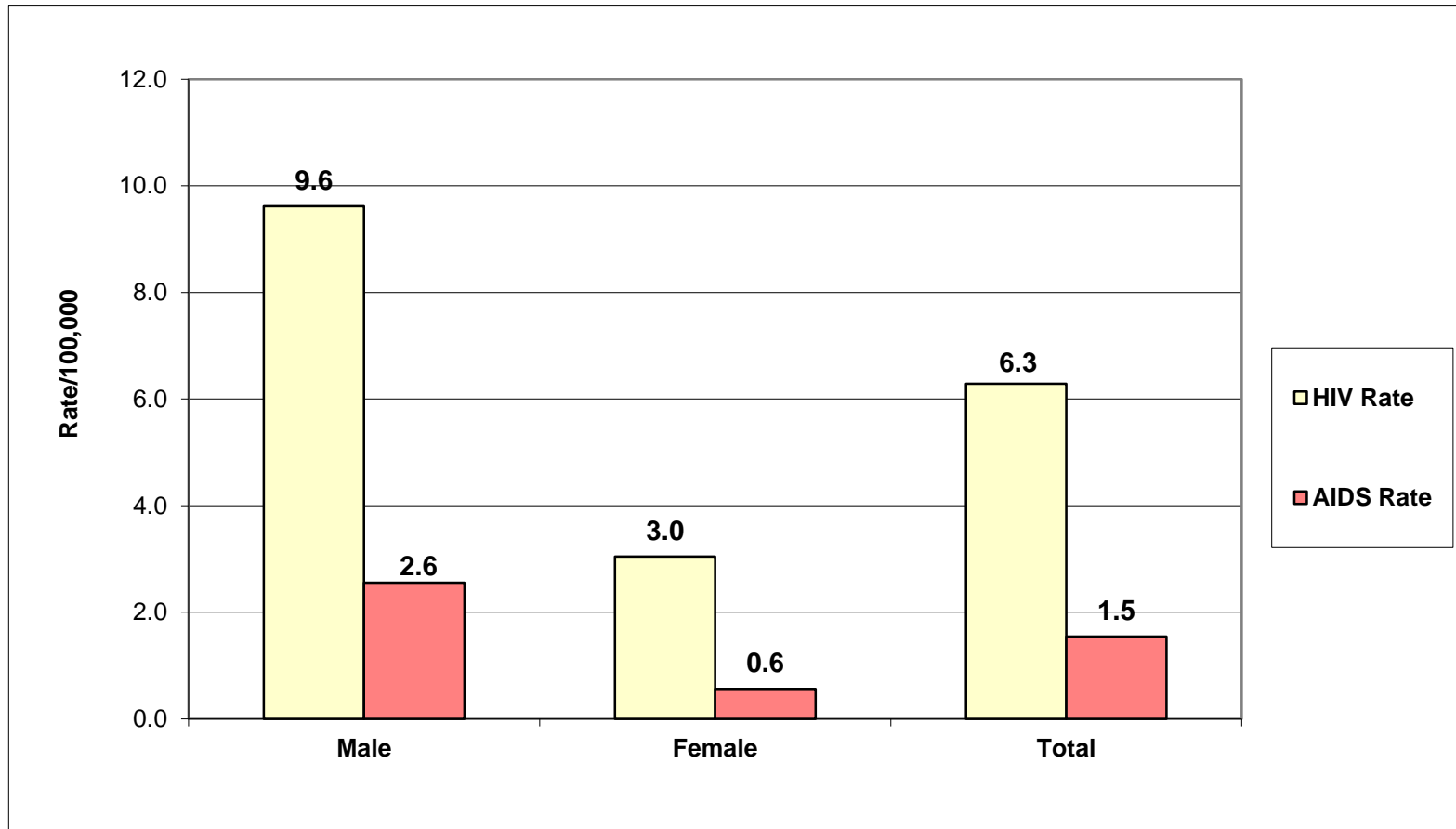
Source: Indiana HIV/AIDS Surveillance Database  
Rates based on U.S. Census, 2017

## *New Diagnosis Numbers (Rates) of HIV, AIDS, and HIV/AIDS by Sex, 2018*

<b>SEX</b>	<b>HIV Number(Rate)</b>	<b>AIDS Number(Rate)</b>	<b>HIV/AIDS Number(Rate)</b>
<b>Male</b>	316 (9.6)	84 (2.6)	400 (12.2)
<b>Female</b>	103 (3.0)	19 (0.6)	122 (3.6)
<b>Total</b>	<b>419 (6.3)</b>	<b>103 (1.5)</b>	<b>522 (7.8)</b>



# *New Diagnosis Rates of HIV and AIDS by Sex, 2018*



Source: Indiana HIV/AIDS Surveillance Database  
Rates based on U.S. Census, 2017

## ***New Diagnosis Numbers (percentage) of HIV/AIDS by Sex, 2016-2018***

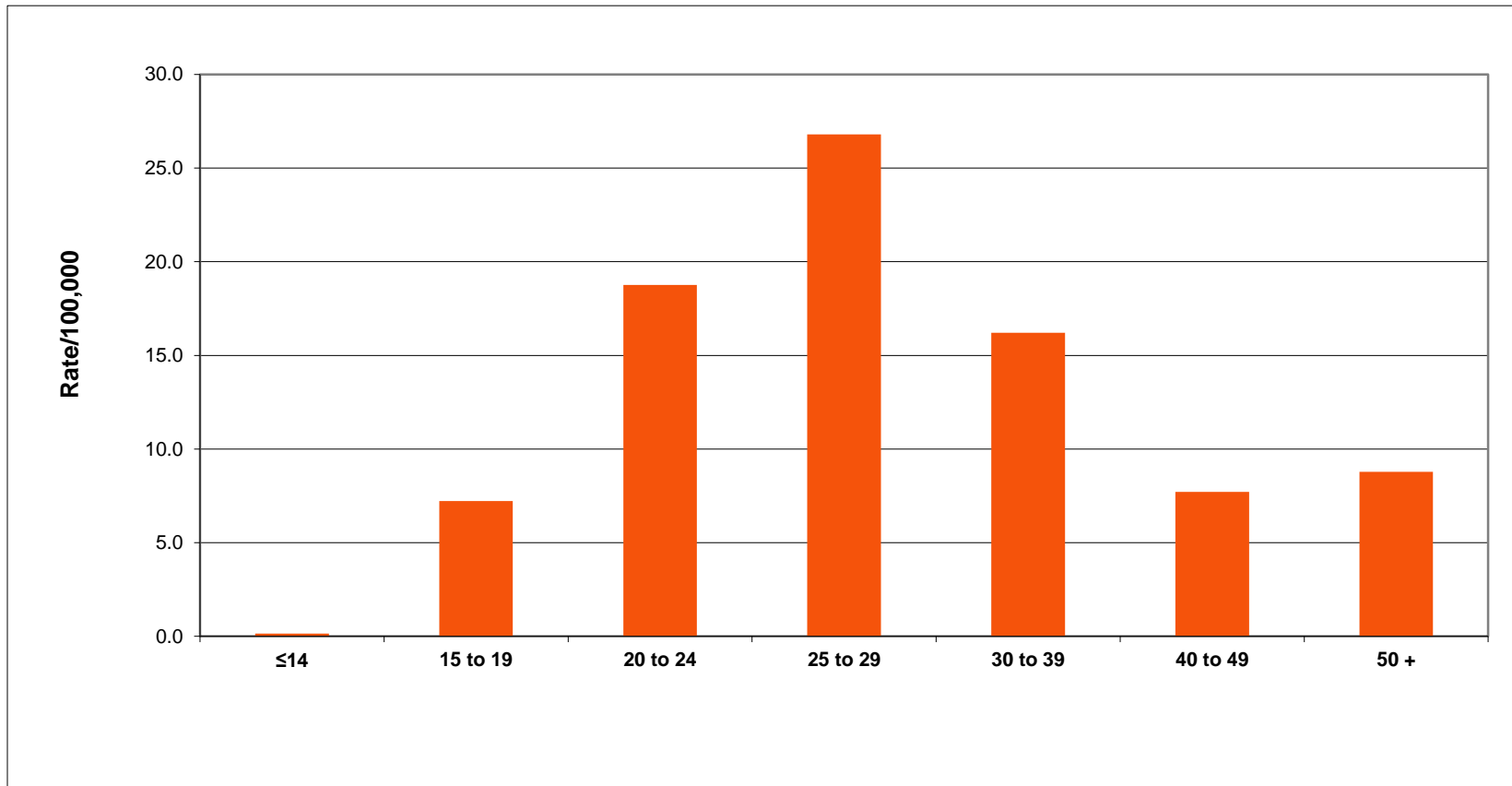
<b>Sex</b>	<b>2018 Number(%)</b>	<b>2017 Number(%)</b>	<b>2016 Number(%)</b>
<b>Male</b>	400 (76.6%)	428 (78.2%)	401 (79.0%)
<b>Female</b>	122 (23.4%)	119 (21.8%)	106 (21.0%)
<b>Total</b>	<b>522</b>	<b>547</b>	<b>507</b>

## *New Diagnosis Numbers (Percentage) of HIV and AIDS by Age at Diagnosis, 2018*

<b>Age Group</b>	<b>HIV Number(%)</b>	<b>AIDS Number(%)</b>	<b>HIV/AIDS Number(%)</b>
<b>14 and under</b>	S	S	S
<b>15-19</b>	31 (7.4)	S	33 (6.3)
<b>20-24</b>	82 (19.6%)	7 (6.8%)	89 (17.0%)
<b>25-29</b>	105 (25.1%)	16 (15.5%)	121 (23.2%)
<b>30-39</b>	110 (26.3%)	26 (25.2%)	136 (26.1%)
<b>40-49</b>	47 (11.2%)	16 (15.5%)	63 (12.1%)
<b>50+</b>	43 (10.3%)	35 (34.0%)	78 (14.9%)
<b>Total</b>	<b>419</b>	<b>103</b>	<b>522</b>

S: Data are suppressed when counts are <5 or if determined identifiable.

# *New Diagnosis Rates of HIV/AIDS by Age at Diagnosis, 2018*



Source: Indiana HIV/AIDS Surveillance Database  
Rates based on U.S. Census, 2017

## ***New Diagnosis Rates of HIV/AIDS by Age at Diagnosis, 2016-2018***

<b>Age Group</b>	<b>2018 Rate</b>	<b>2017 Rate</b>	<b>2016 Rate</b>
<b>14 and under</b>	0.2	0.2	0.1
<b>15-19</b>	7.2	6.3	5.3
<b>20-24</b>	18.8	21.1	19.4
<b>25-29</b>	26.8	25.9	22.6
<b>30-39</b>	16.2	15.4	16.5
<b>40-49</b>	7.7	10.9	9.0
<b>50+</b>	8.8	9.2	8.6
<b>Total</b>	<b>7.8</b>	<b>8.3</b>	<b>7.7</b>

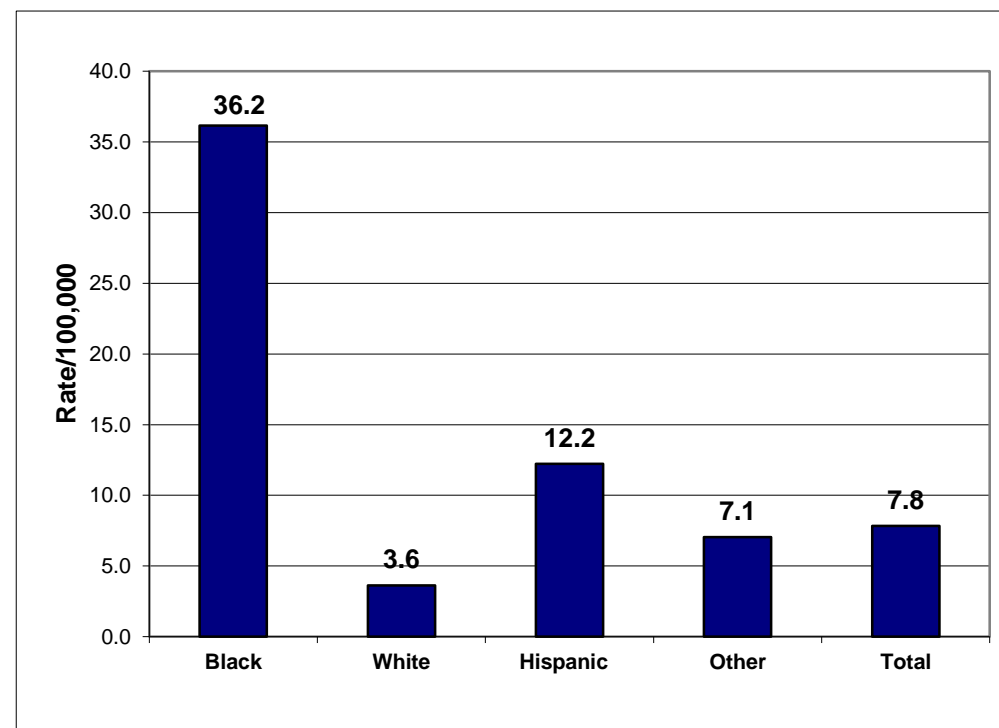
## ***New Diagnosis Numbers (rate) of HIV and AIDS by Race/Ethnicity, 2018***

<b>Race/Ethnicity</b>	<b>HIV Number(Rate)</b>	<b>AIDS Number(Rate)</b>	<b>HIV/AIDS Number(Rate)</b>
<b>Black</b>	193 (29.7)	42 (6.5)	235 (36.2)
<b>White</b>	163 (2.9)	44 (0.8)	207 (3.6)
<b>Hispanic</b>	45 (9.6)	12 (2.6)	57 (12.2)
<b>Other</b>	18 (5.5)	5 (4.9)	23 (7.1)
<b>Total</b>	<b>419 (6.3)</b>	<b>103 (1.5)</b>	<b>522 (7.8)</b>

Source: Indiana HIV/AIDS Surveillance Database  
Rates based on U.S. Census, 2017

# New Diagnosis Rates of HIV/AIDS by Race/Ethnicity, 2018

	Number	Percent	Rate
<b>Black</b>	235	45.0	36.2
<b>White</b>	207	39.7	3.6
<b>Hispanic</b>	57	10.9	12.2
<b>Other</b>	23	4.4	7.1
<b>Total</b>	<b>522</b>	<b>100.0</b>	<b>7.8</b>



Source: Indiana HIV/AIDS Surveillance Database  
Rates based on U.S. Census, 2017

## ***New Diagnosis Numbers (Percents) of HIV/AIDS by Race/Ethnicity, 2016-2018***

<b>Race/Ethnicity</b>	<b>2018 Number(%)</b>	<b>2017 Number(%)</b>	<b>2016 Number(%)</b>
<b>Black</b>	235 (45.0%)	255 (46.6%)	222 (43.8%)
<b>White</b>	207 (39.7%)	204 (37.3%)	208 (41.0%)
<b>Hispanic</b>	57 (10.9%)	61 (13.8%)	53 (10.5%)
<b>Other</b>	23 (4.4%)	27 (4.9%)	24 (4.7%)
<b>Total</b>	<b>522 (100.0%)</b>	<b>547 (100.0%)</b>	<b>507 (100.0%)</b>

Source: Indiana HIV/AIDS Surveillance Database  
Rates based on U.S. Census, 2017



## ***New Diagnosis Numbers (Percents) of HIV/AIDS Among Males by Transmission, 2016–2018***

Mode	2018 Number(%)	2017 Number(%)	2016 Number(%)
<b>MSM</b>	195 (37.4%)	219 (40.0%)	178 (35.1%)
<b>MSM/PWID</b>	11 (2.1%)	10 (1.8%)	8 (1.6%)
<b>MSM/Hetero</b>	38 (7.3%)	33 (6.0%)	44 (8.7%)

## *New Diagnosis Numbers (Percents) of HIV/AIDS by Transmission, 2016–2018Cont..\**

Mode	2018 Number(%)	2017 Number(%)	2016 Number(%)
<b>PWID</b>	20 (3.8%)	15 (2.7%)	18 (3.6%)
<b>Heterosexual</b>	127 (24.3%)	120 (21.9%)	121 (23.9%)
<b>Mother HIV+</b>	2 (0.4%)	0 (0.0%)	0 (0.0%)
<b>PWID/Hetero</b>	22 (4.2%)	22 (4.0%)	21 (4.1%)
<b>Other</b>	107 (20.5%)	128 (23.6%)	117 (23.0%)
<b>Total HIV/AIDS</b>	<b>522 (100.0%)</b>	<b>547 (100.0%)</b>	<b>507 (100.0%)</b>

Source: Indiana HIV/AIDS Surveillance Database  
Rates based on U.S. Census, 2017

# HIV/AIDS New Diagnosis Among Males by Mode of Transmission and Race/Ethnicity, 2018\*

Mode	Black		Hispanic		White		Other	
	Number	Rate	Number	Rate	Number	Rate	Number	Rate
<b>MSM</b>	<b>74</b>	23.6	<b>29</b>	12.0	<b>82</b>	2.9	<b>10</b>	6.2
<b>MSM/PWID</b>	<b>S</b>	S	<b>S</b>	S	<b>9</b>	0.3	<b>S</b>	<b>S</b>
<b>MSM/Hetero</b>	<b>19</b>	6.1	<b>S</b>	S	<b>14</b>	0.5	<b>S</b>	<b>S</b>

\*MSM, MSM/PWID, MSM/Hetero rates are based on Indiana male population (per 100,000).

S: Data are suppressed when counts are <5 or if determined identifiable.

# HIV/AIDS New Diagnosis by Mode of Transmission and Race/Ethnicity, 2018\*

Mode	Black		Hispanic		White		Other	
	Number	Rate	Number	Rate	Number	Rate	Number	Rate
<b>PWID</b>	<b>S</b>	<b>S</b>	<b>S</b>	<b>S</b>	<b>17</b>	<b>0.3</b>	<b>S</b>	<b>S</b>
<b>Heterosexual Contact</b>	<b>78</b>	<b>12.0</b>	<b>8</b>	<b>1.7</b>	<b>35</b>	<b>0.6</b>	<b>6</b>	<b>1.8</b>
<b>PWID/Heterosexual Contact</b>	<b>S</b>	<b>S</b>	<b>S</b>	<b>S</b>	<b>16</b>	<b>0.3</b>	<b>S</b>	<b>S</b>
<b>Other</b>	<b>57</b>	<b>8.8</b>	<b>15</b>	<b>3.2</b>	<b>34</b>	<b>0.6</b>	<b>S</b>	<b>S</b>
<b>Total Population**</b>	<b>235</b>	<b>36.2</b>	<b>57</b>	<b>12.2</b>	<b>207</b>	<b>3.6</b>	<b>23</b>	<b>7.1</b>

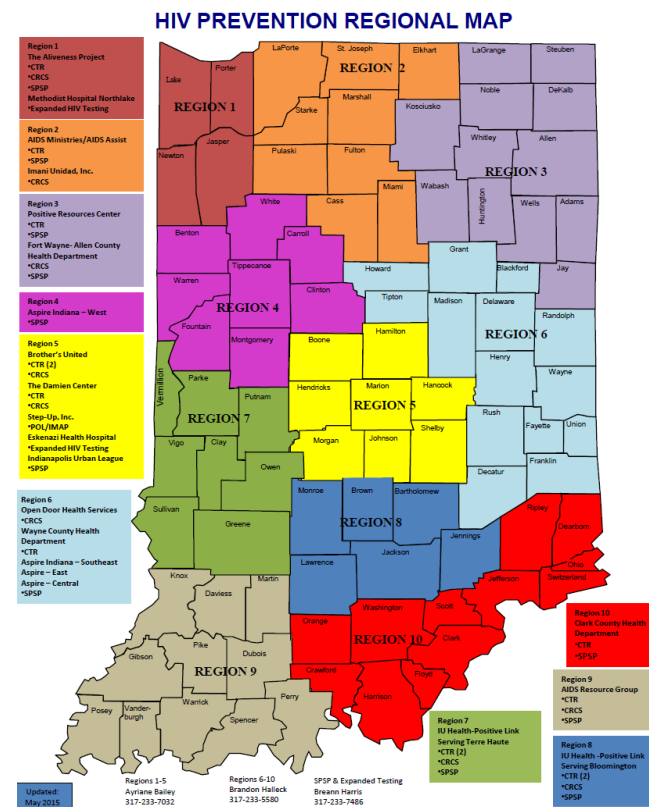
\* Rates are based on Indiana total population (per 100,000).

\*\*Total Population = Indiana HIV/AIDS population

S: Data are suppressed when counts are <5 or if determined identifiable.

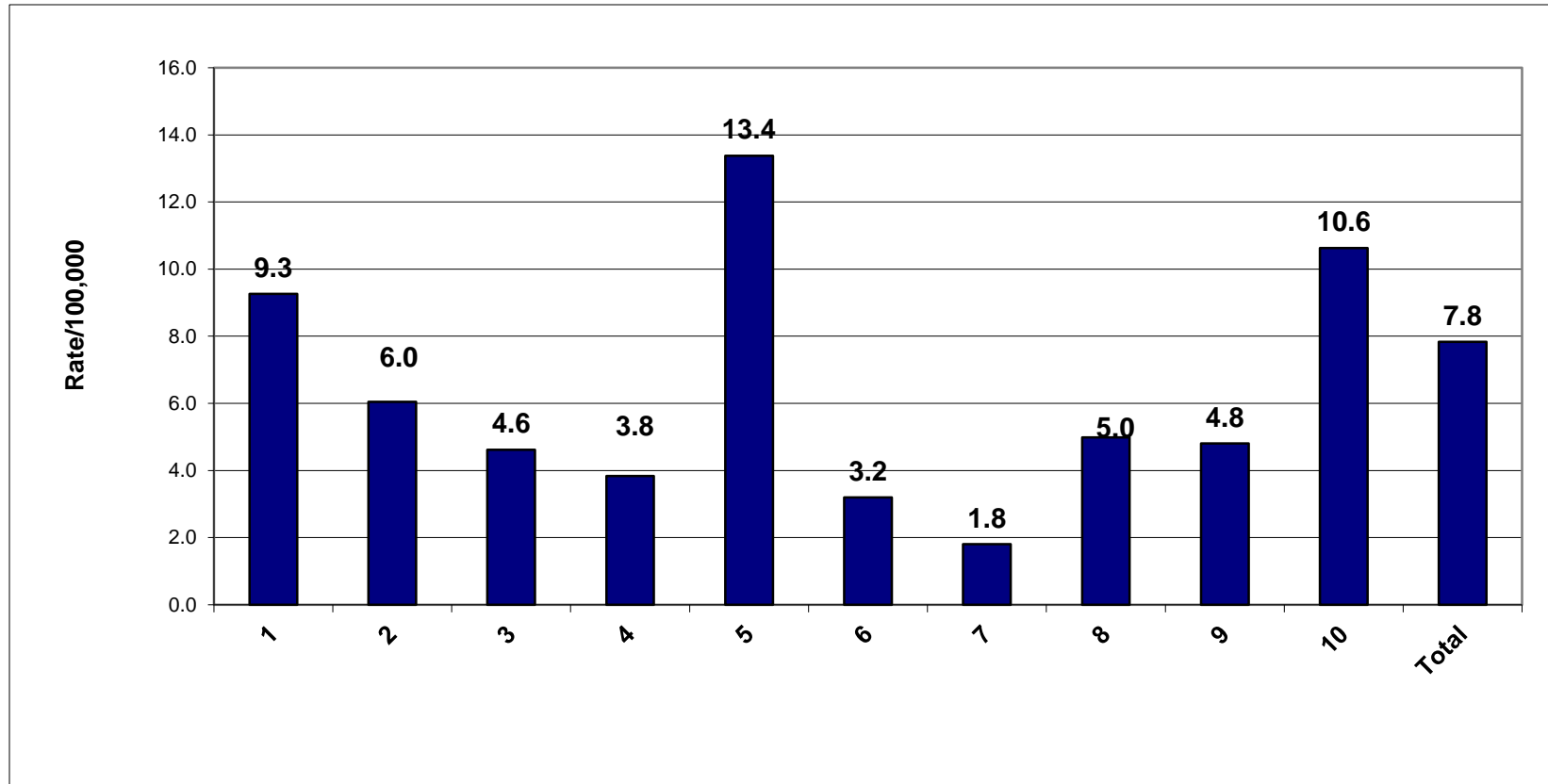
# HIV/AIDS New Diagnosis Numbers, Percents and Rates by Region, 2018

Health Region	Total	Percent	Rate
1	65	12.5	9.3
2	46	8.8	6.0
3	37	7.1	4.6
4	13	2.5	3.8
5	247	47.3	13.4
6	21	4.0	3.2
7	5	1.0	1.8
8	18	3.4	5.0
9	23	4.4	4.8
10	47	9.0	10.6
<b>Total</b>	<b>522</b>	<b>100.0</b>	<b>7.8</b>



Source: Indiana HIV/AIDS Surveillance Database  
Rates based on U.S. Census, 2017

# *HIV/AIDS New Diagnosis Rates by Health Regions, 2018*



Source: Indiana HIV/AIDS Surveillance Database  
Rates based on U.S. Census, 2017