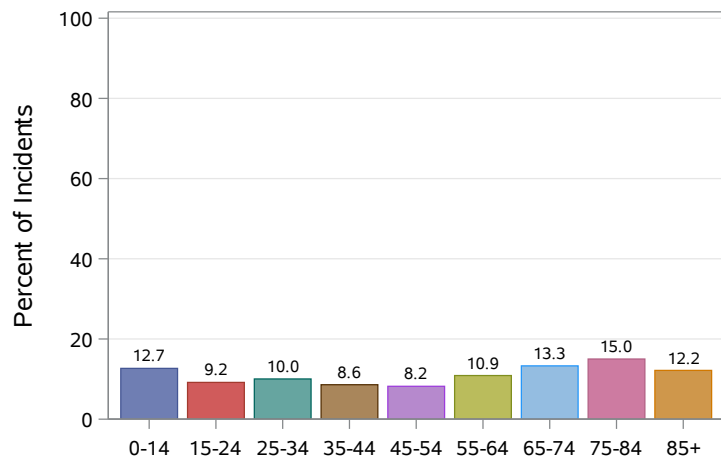


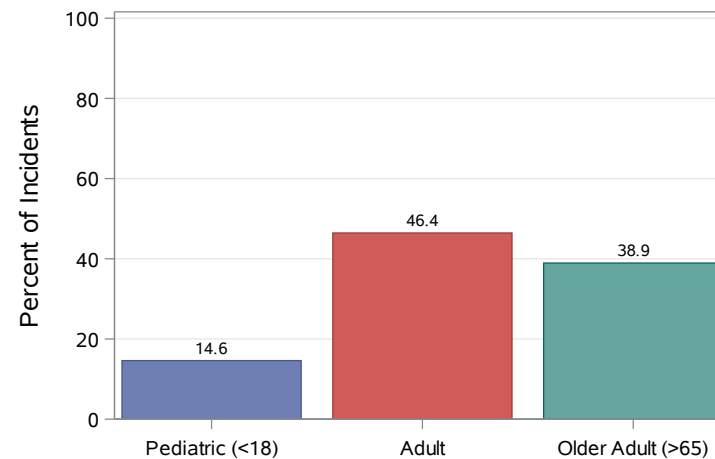
District 5: Quarter 1 Indiana Trauma Registry Report

Statewide Incidents: 9318 Hospitals Reporting: 109 District 5 Incidents: 2573 Hospitals Reporting: 24

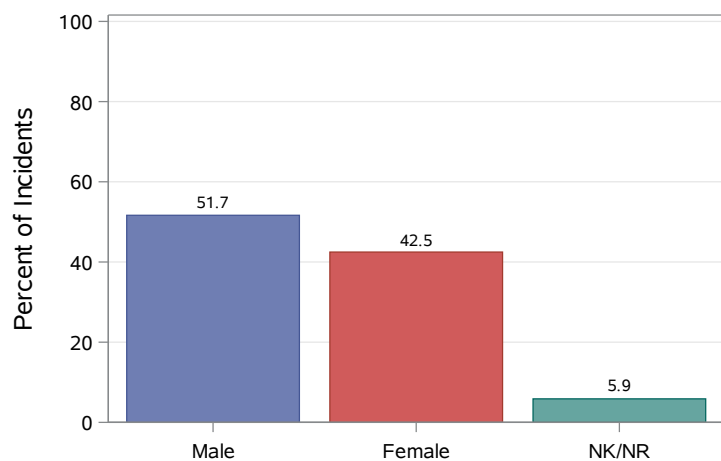
Patient Age Category



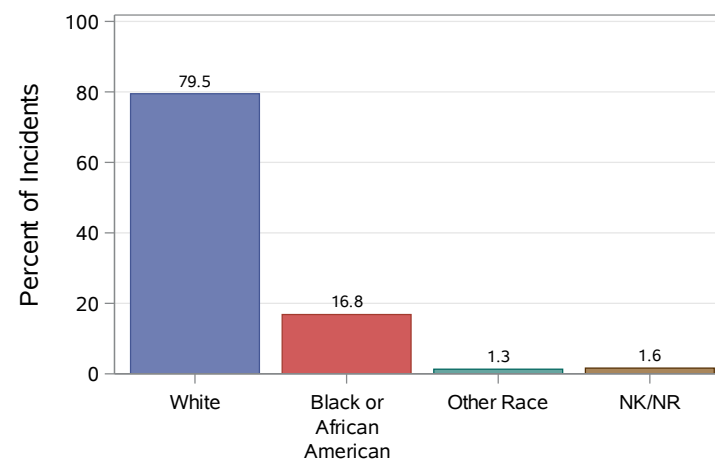
Patient Age Group



Patient Gender



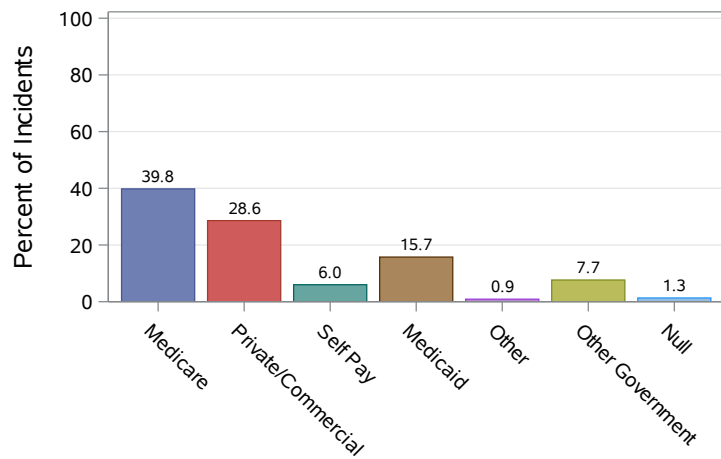
Patient Race



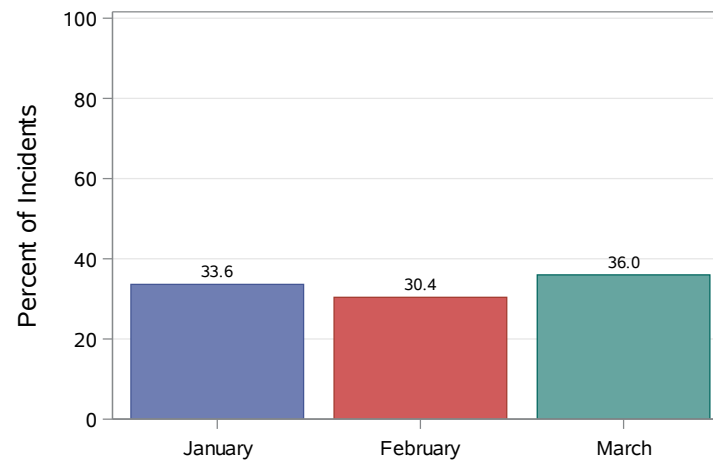
District 5: Quarter 1 Indiana Trauma Registry Report

Statewide Incidents: 9318 Hospitals Reporting: 109 District 5 Incidents: 2573 Hospitals Reporting: 24

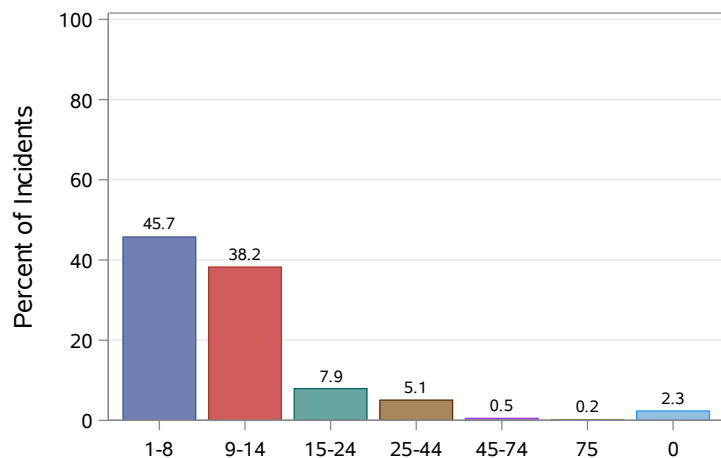
Primary Payer Mix



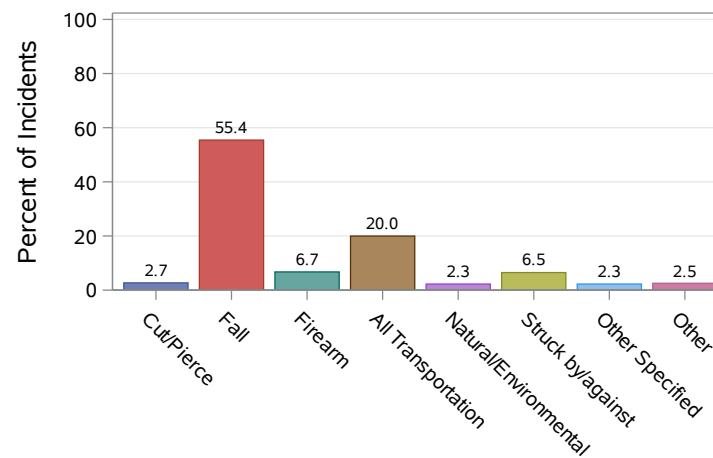
Month of Admit



ISS Category



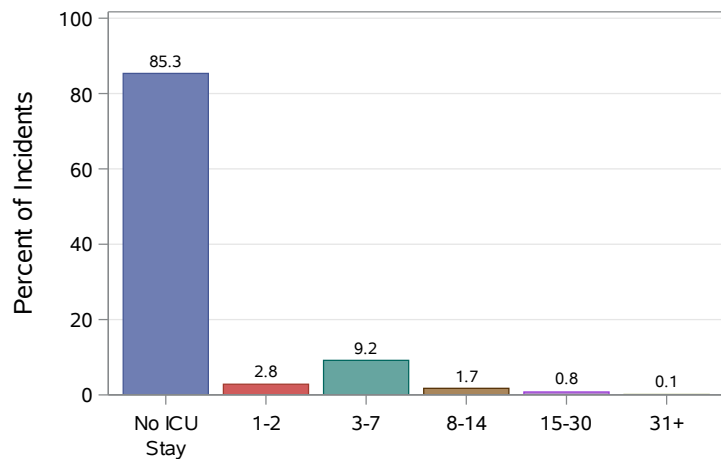
Cause of Injury



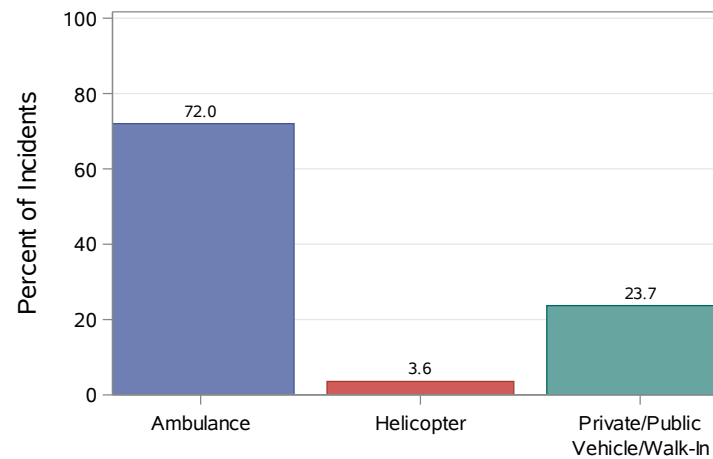
District 5: Quarter 1 Indiana Trauma Registry Report

Statewide Incidents: 9318 Hospitals Reporting: 109 District 5 Incidents: 2573 Hospitals Reporting: 24

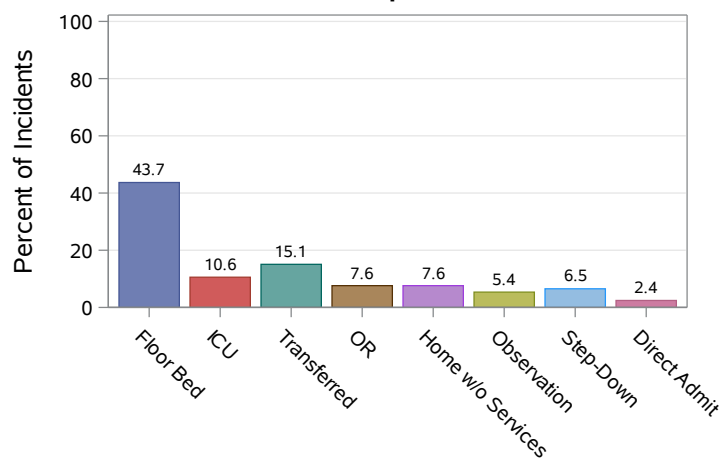
ICU Length of Stay (Days)



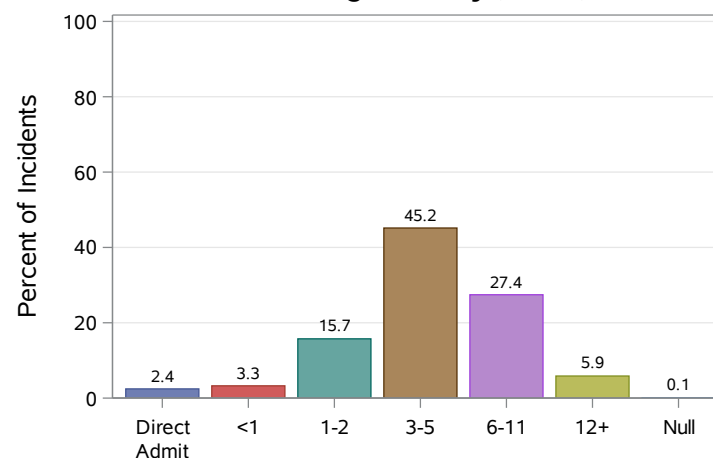
Transport Mode



ED Disposition



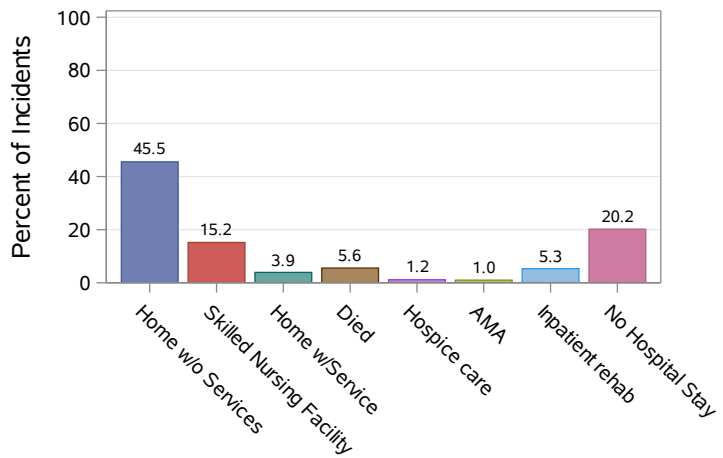
ED Length of Stay (Hours)



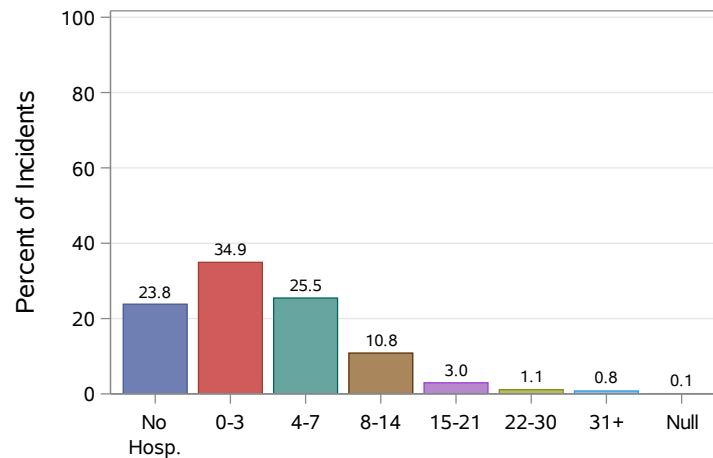
District 5: Quarter 1 Indiana Trauma Registry Report

Statewide Incidents: 9318 Hospitals Reporting: 109 District 5 Incidents: 2573 Hospitals Reporting: 24

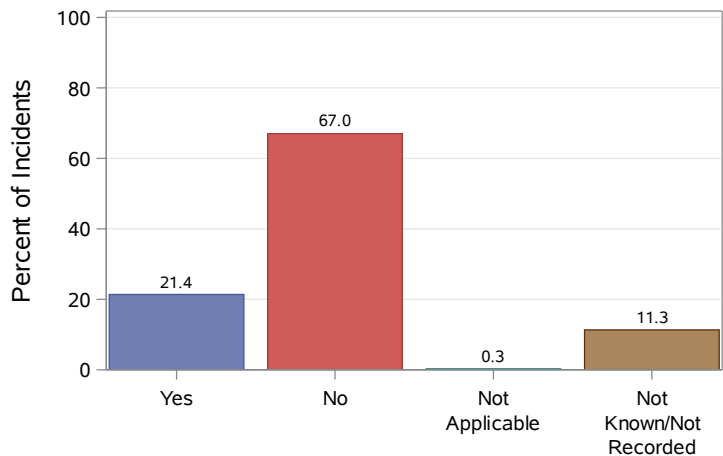
Hospital Disposition



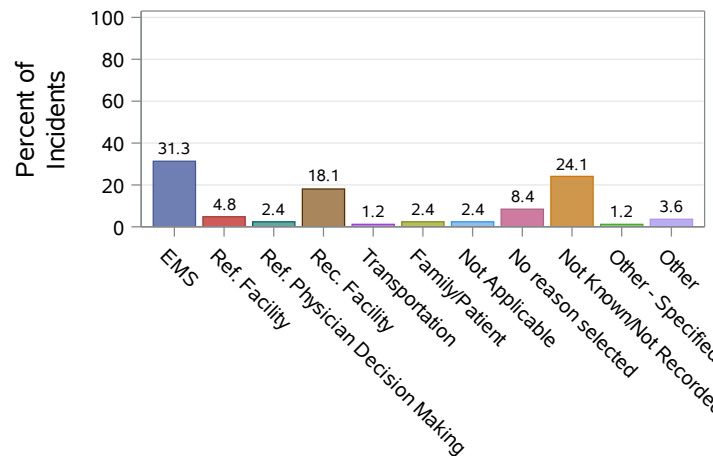
Hospital Length of Stay (Days)



Transfer Delay



Transfer Delay Reason



District 5: Quarter 1 Indiana Trauma Registry Report

Statewide Incidents: 9318 Hospitals Reporting: 109 District 5 Incidents: 2573 Hospitals Reporting: 24

ED Length of Stay Metrics

Overall (Minutes)

| Category | Min. | Mean | Max. | N | Std. |
|--------------------|------|--------|------|------|--------|
| District 5 | 1 | 343.16 | 1894 | 2508 | 240.59 |
| Indiana | 0 | 276.58 | 2181 | 8583 | 216.34 |
| Trauma I & II | 1 | 256.98 | 1737 | 3463 | 197.95 |
| Trauma III | 0 | 282.93 | 1778 | 1849 | 209.44 |
| Non-Trauma Centers | 0 | 273.54 | 1974 | 2383 | 208.44 |

Transfers Only (Minutes)

| Category | Min. | Mean | Max. | N | Std. |
|--------------------|------|--------|------|------|--------|
| District 5 | 12 | 291.09 | 1803 | 386 | 224.00 |
| Indiana | 12 | 254.04 | 1932 | 1679 | 203.26 |
| Trauma I & II | 70 | 217.96 | 524 | 50 | 110.16 |
| Trauma III | 16 | 231.45 | 1399 | 385 | 163.43 |
| Non-Trauma Centers | 12 | 263.32 | 1932 | 1111 | 215.47 |

By ISS Score (Mean Hours)

| Category | 1-8 | 9-14 | 15-24 | 25-44 | 45-74 | 75 | NA |
|--------------------|------|------|-------|-------|-------|------|------|
| District 5 | 5.81 | 6.04 | 5.27 | 3.97 | 1.88 | 3.17 | 5.08 |
| Indiana | 4.74 | 4.80 | 3.96 | 3.00 | 1.68 | 1.82 | 4.18 |
| Trauma I & II | 4.61 | 4.41 | 3.84 | 2.73 | 1.62 | 2.09 | 4.00 |
| Trauma III | 4.88 | 4.74 | 4.01 | 3.36 | 1.95 | 1.50 | 3.96 |
| Non-Trauma Centers | 4.50 | 4.73 | 4.08 | 3.30 | . | . | 4.23 |

NA = No ISS Score

Critical Pat. Transfers Completed in < 2 Hrs

| Category | Critical | Physiological Critical | ISS Critical |
|--------------------|----------|------------------------|--------------|
| District 5 | 29.89% | 23.53% | 29.63% |
| Indiana | 39.95% | 56.34% | 37.09% |
| Trauma I & II | 57.89% | 60.00% | 61.54% |
| Trauma III | 59.22% | 62.50% | 57.35% |
| Non-Trauma Centers | 35.14% | 52.17% | 32.55% |