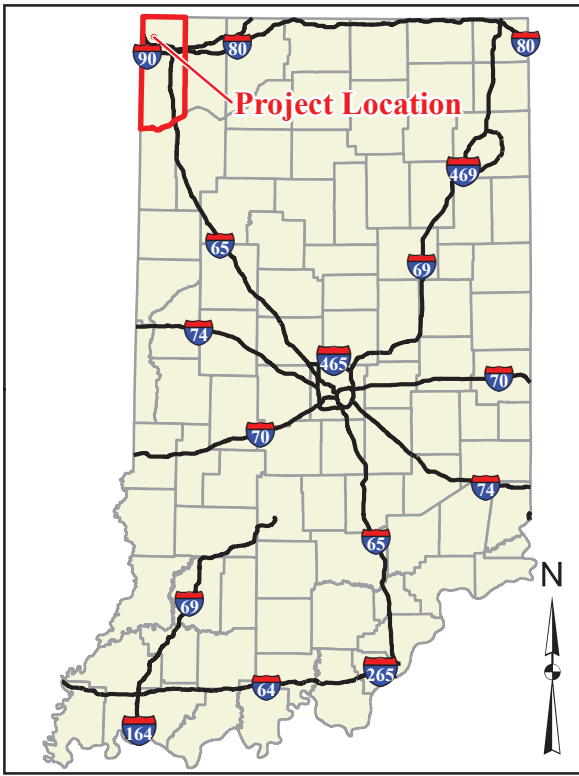
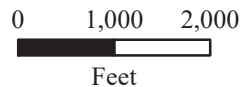


Appendix B

Graphics



- Study Area
- ~ Streams and Rivers
- ~ Interstate
- ~ State Routes
- Incorporated Areas
- ~ Local Roads



Sources:
 Non Orthophotography Data -
 Obtained from the State of Indiana
 Geographical Information Office Library
 Orthophotography -
 Obtained from Indiana Map
 Framework Data (www.indianamap.org)

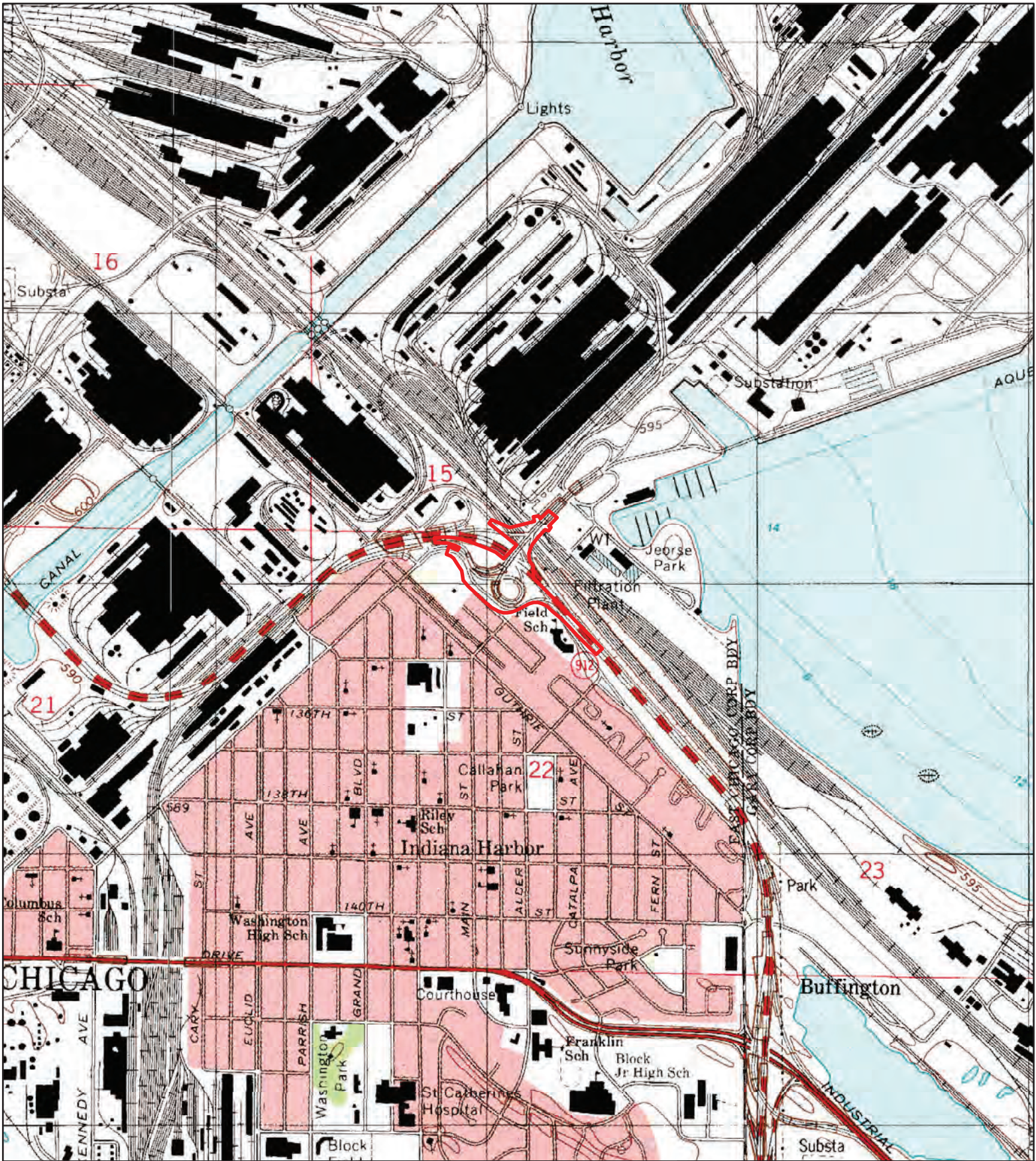
**SR 912 Michigan Avenue Bridges
 Lake County, Indiana
 Project Location**

Des. 1703011

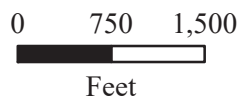
Date: 5/3/2021



PARSONS



 Study Area



SR 912 Michigan Avenue Bridges
Lake County, Indiana
USGS Topographic

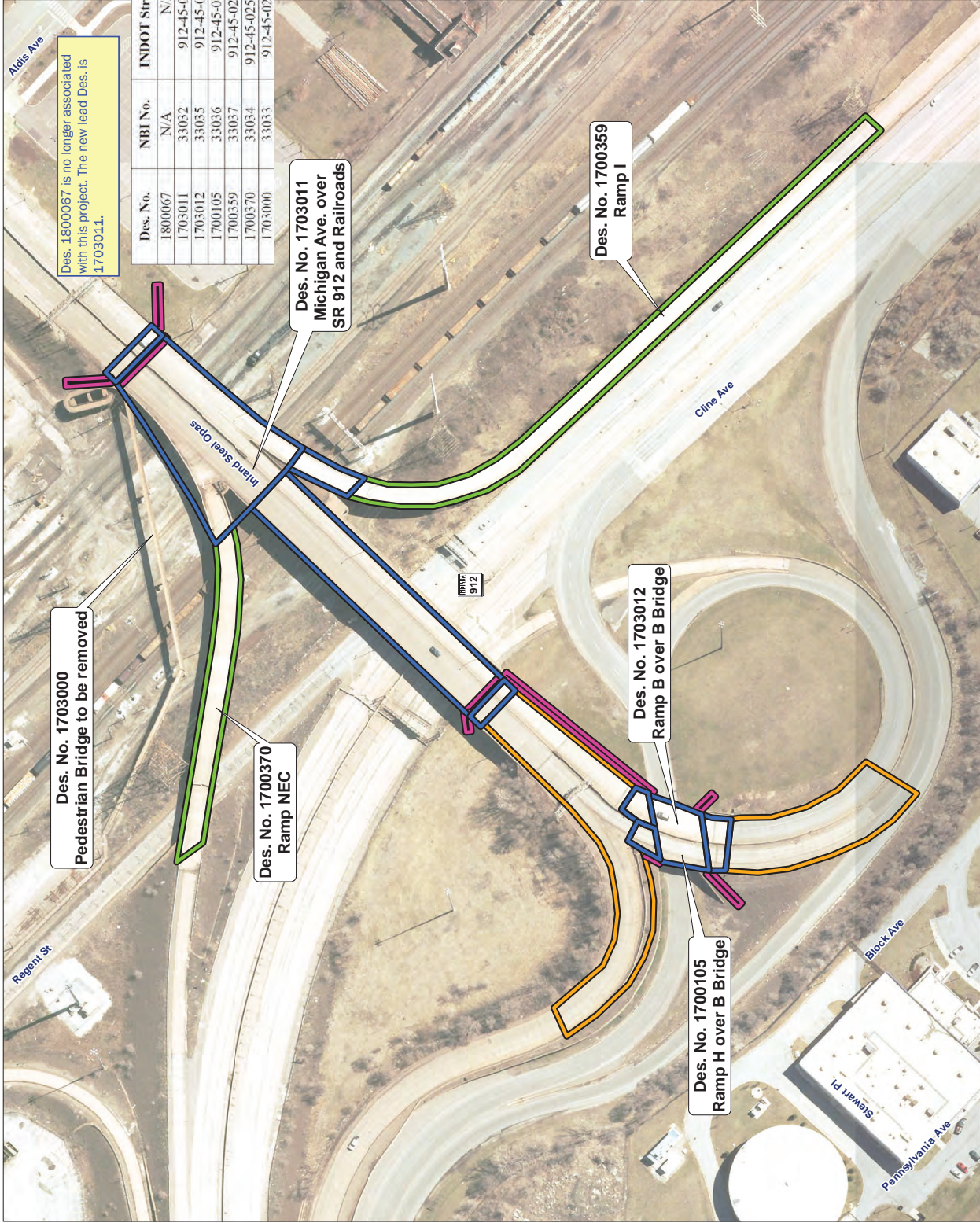
Des. 1703011

Date: 5/3/2021

Sources:
 Non Orthophotography Data -
 Obtained from the State of Indiana Geographical
 Information Office Library
 Orthophotography -
 Obtained from Indiana Map
 Framework Data (www.indianamap.org)



PARSONS

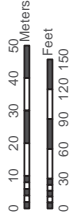


- Bridge reconstruction
- Bridge repair and overlay
- Wall construction
- Road reconstruction

Des. 1800067 is no longer associated with this project. The new lead Des. is 1703011.

Des. No.	NBI No.	INDOT Structure No.	Bridge
1800067	N/A	N/A	Mother Des.
1703011	33032	912-45-02543 B	Michigan Avenue over SR 912 and RRs
1703012	33035	912-45-06596 B	Ramp B over B
1700105	33036	912-45-06596 JA	Ramp H over B
1700359	33037	912-45-02543 A RI	Ramp I
1700370	33034	912-45-02543 A NEC	Ramp NEC
1703000	33033	912-45-02545 ADJ	Pedestrian Bridge over RR

Base: Aerial photograph
2018



Bridges Exhibit

Aerial photograph showing the bridges involved in the SR 912 and Michigan Avenue Bridges Project (Des. No. 180067, et al.), City of East Chicago, Lake County, Indiana.

Des. No. 1703000
Pedestrian Bridge to be removed

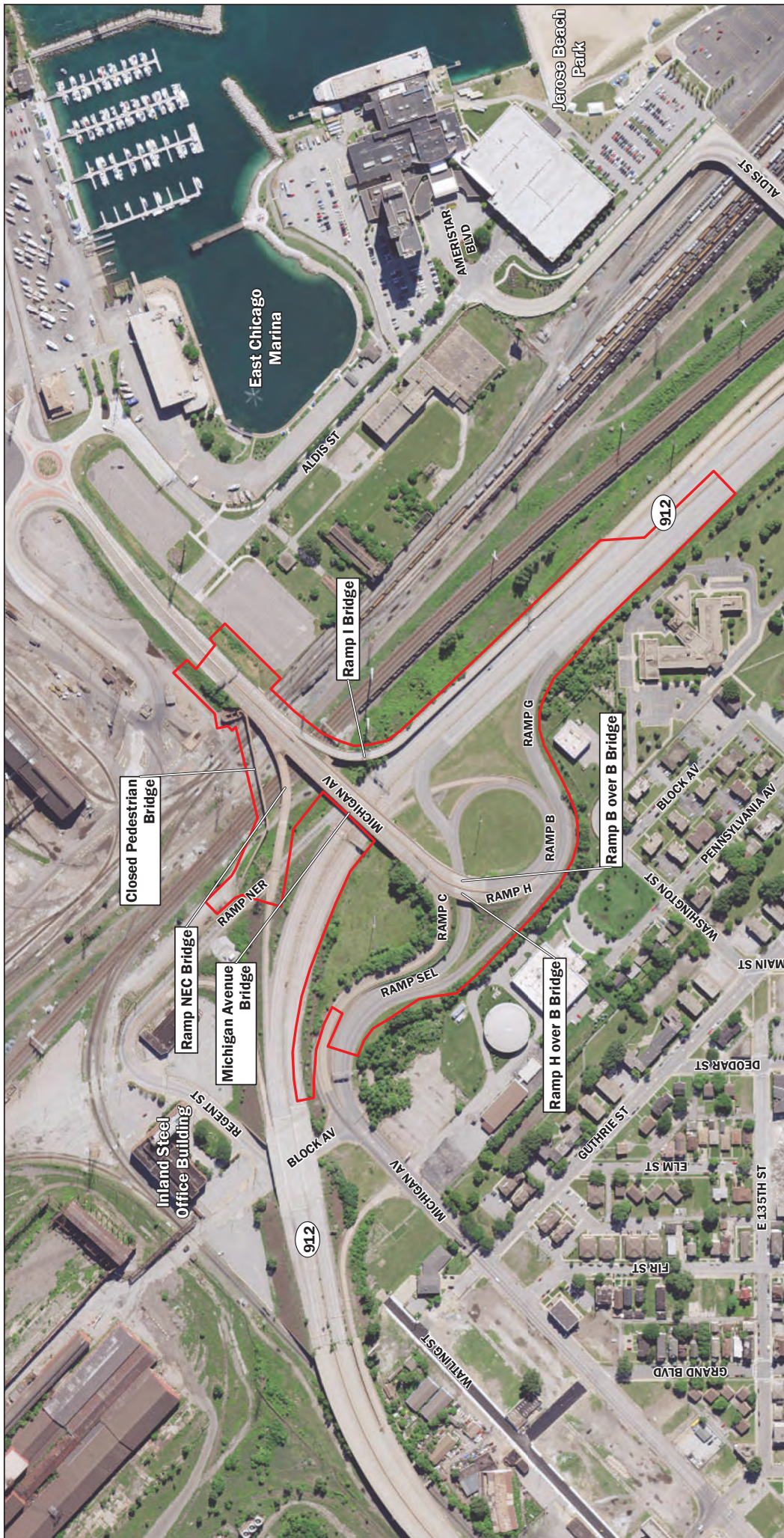
Des. No. 1700370
Ramp NEC

Des. No. 1703011
Michigan Ave. over
SR 912 and Railroads

Des. No. 1703012
Ramp B over B Bridge

Des. No. 1700105
Ramp H over B Bridge

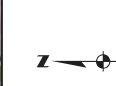
Des. No. 1700359
Ramp I



**SR 912 and Michigan Avenue
Bridges Project
Lake County, Indiana
Existing Conditions**

Des. 1703011 et al.
Date: 6/23/2022

Sources:
Non-Orthophotography Data -
Obtained from the State of
Indiana Geographical
Information Office Library
Orthophotography -
Obtained from Indiana
Map Framework Data
(www.indianamap.org)



Project Area





Phase 1

SR 912 and Michigan Avenue Bridges Project
Lake County, Indiana
Maintenance of Traffic

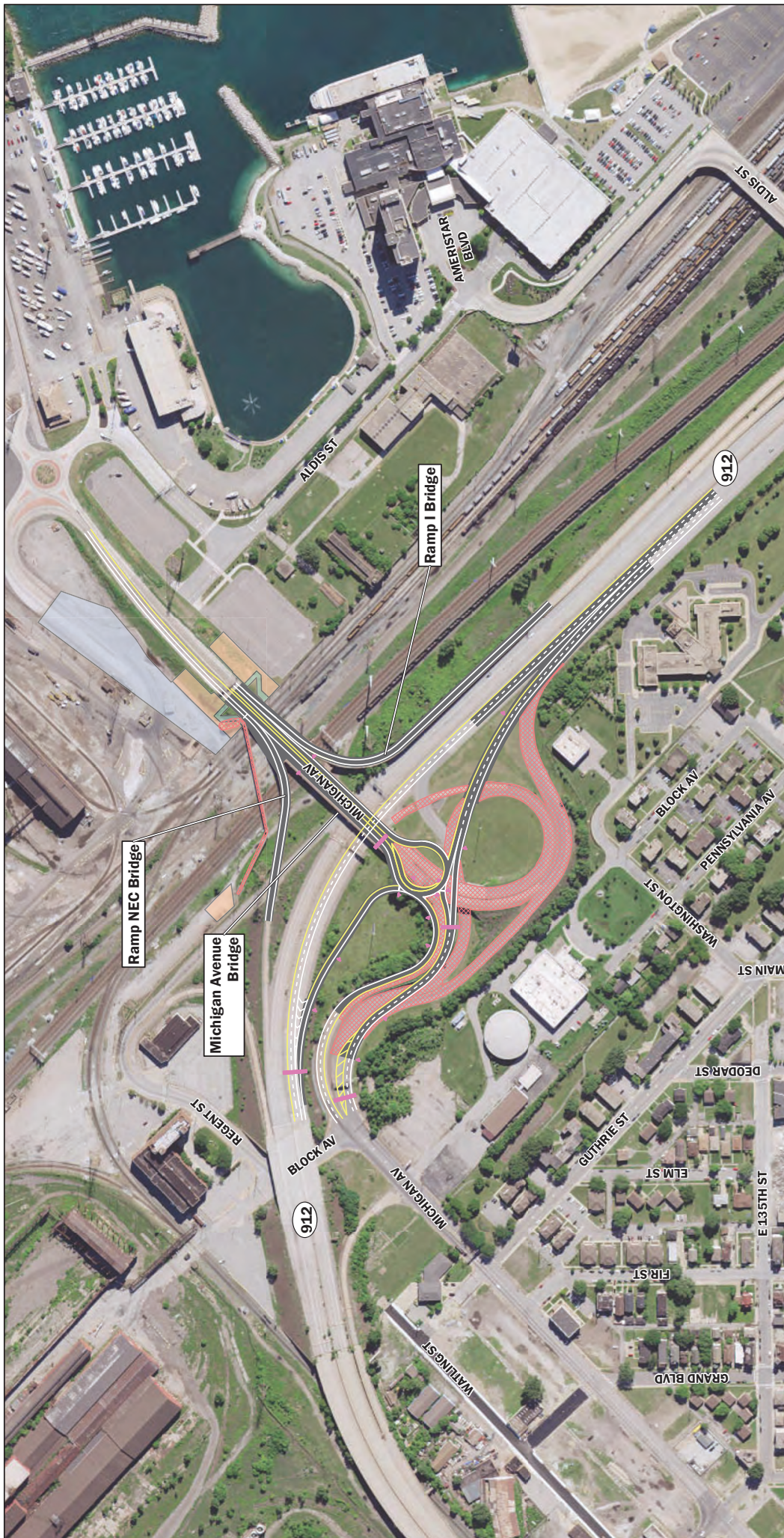
Sources:
 Non-Orthophotography Data -
 Obtained from the State of
 Indiana Geographical
 Information Office Library
 Orthophotography -
 Obtained from Indiana
 Map Framework Data
 (www.indianamap.org)

Des. 1703011 et al.
 Date: 6/23/2022

PARSONS

Legend:
 [Cross-hatch pattern] Phase 1 & 2 Closure
 [Blue cross-hatch pattern] Phase 2 Closure Only
 [Purple line] Traffic Barrier
 [Red dashed line] Traffic Barrel
 [White line] Temporary White Pavement Marking
 [Yellow line] Temporary Yellow Pavement Marking

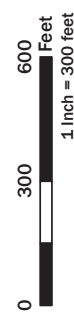
Scale:
 0 500 1,000 Feet
 1 Inch = 500 feet



**SR 912 and Michigan Avenue
Bridges Project
Lake County, Indiana
Proposed Conditions**

Des. 1703011 et al.
Date: 6/23/2022

Sources:
Non-Orthophotography Data -
Obtained from the State of
Indiana Geographical
Information Office Library
Orthophotography -
Obtained from Indiana
Map Framework Data
(www.indianamap.org)



- Yellow Pavement Marking
- Proposed Pavement Removal
- Temporary ROW (2.81 ac)
- Right-of-Entry ROW (2.02 ac)
- White Pavement Marking
- Broken White Pavement Marking
- Traffic Sign
- Reacquired ROW (0.11 ac)
- Proposed New Pavement

Created by: ROW

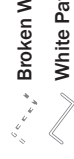




Photo 1 – View of Ramp H bridge over Ramp B facing east (2/14/2019).



Photo 2 – View along westbound SR 912 of the Michigan Avenue Bridge over SR 912, railroad yard, and service road facing northwest (2/14/2019).



Photo 3 – View of pedestrian bridge over railroad yard and service road facing southwest (2/14/2019).



Photo 4 – View of the Ramp NEC bridge over railroad yard and service road facing northwest (2/14/2019).



Photo 5 – View of Ramp B bridge over Ramp B facing west (9/29/2020).

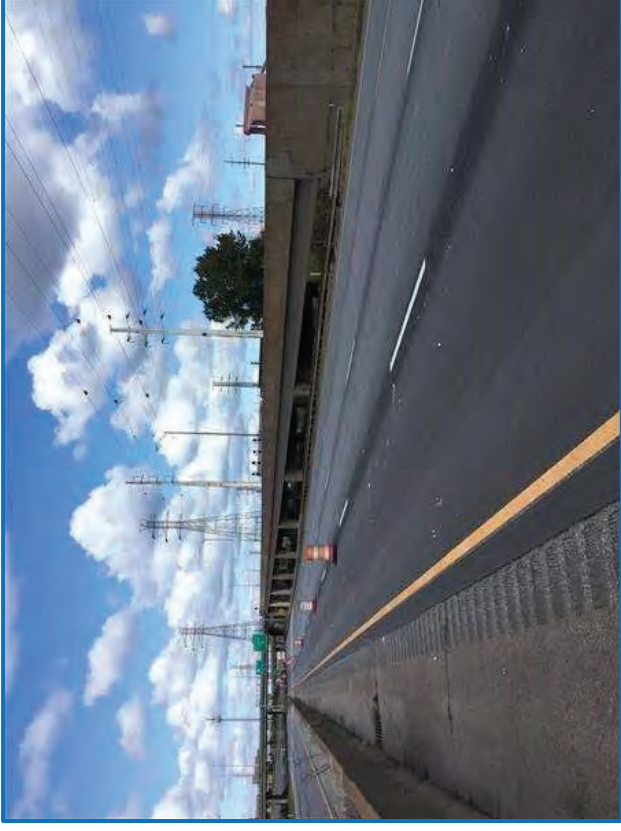


Photo 6 – View along westbound SR 912 of Ramp I facing west (9/29/2020).



Photo 7 – View along eastbound SR 912 of Michigan Avenue bridge over SR 912, railroad yard, and service road facing southeast (2/14/2019).



Photo 8 – View of Ramp NEC over railroad yard and service road and SR 912 from the Michigan Avenue Bridge over SR 912 facing northwest (2/14/2019).