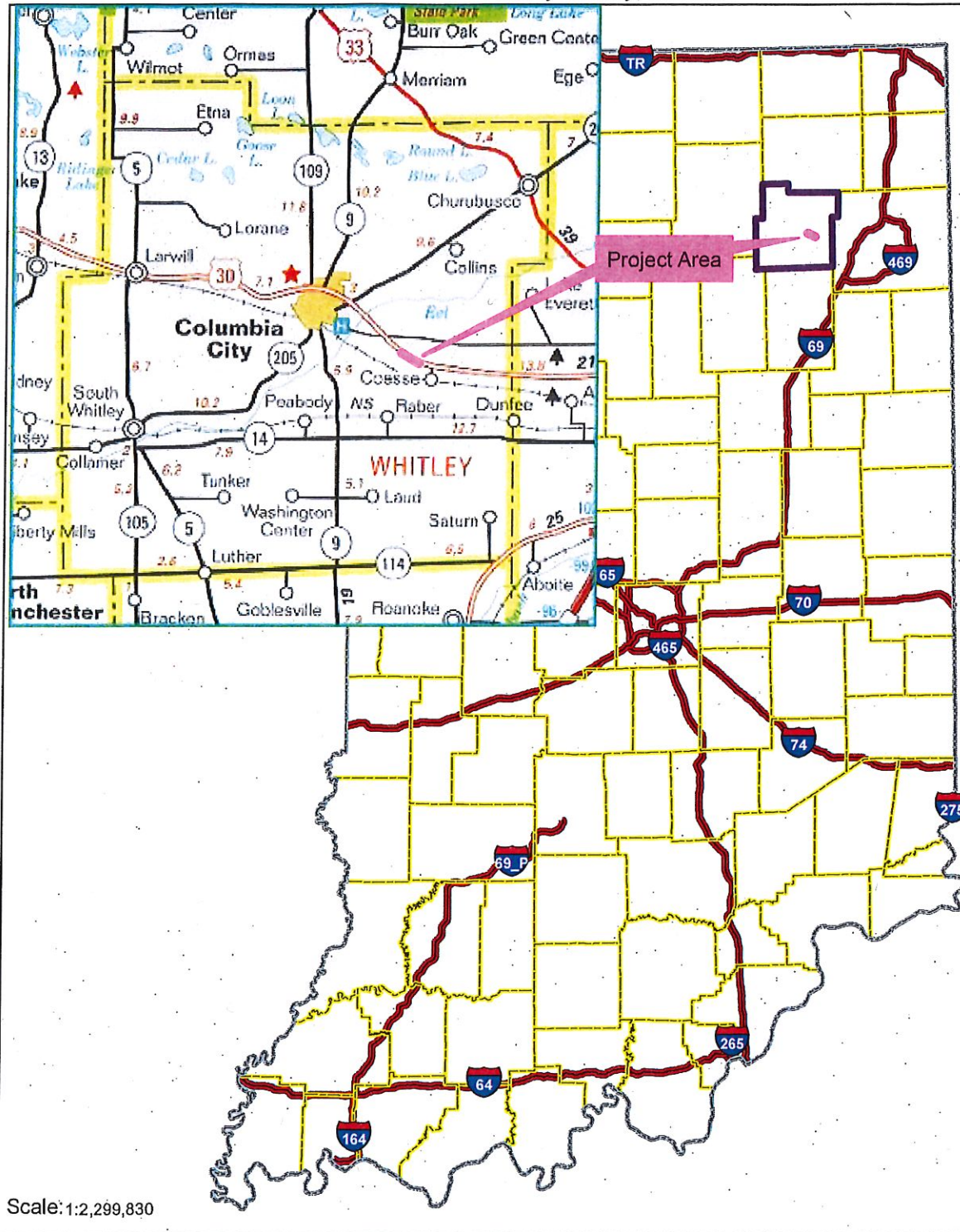


Site Location Map
 Des No. 1600515
 Other Intersection Improvement
 US 30, 5.01 miles E of SR 205 (at CR 500 E)
 RP 116+90 to RP 117+28
 Whitley County, Indiana



Sources: Non Orthophotography

Data - Obtained from the State of Indiana Geographical Information Office Library

Orthophotography - Obtained from Indiana Map Framework Data (www.indianamap.org)

Map Projection: UTM Zone 16 N **Map Datum:** NAD83



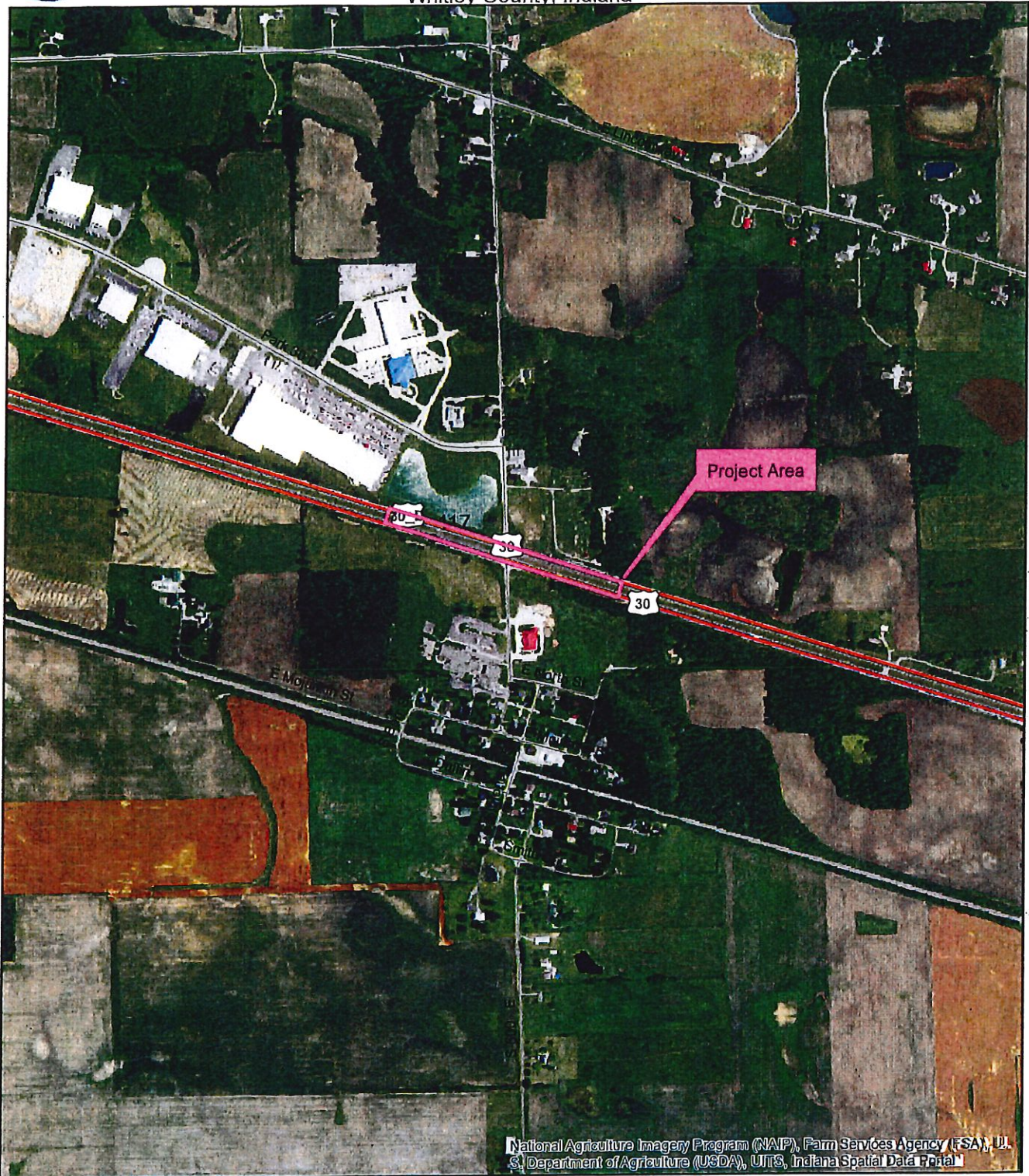
Legend

- State Boundary
- County Boundaries
- Highways**
- Interstates

This map is intended to serve as an aid in graphic representation only. This information is not warranted for accuracy or other purposes.



Aerial Map
 Des. No. 1600515, Other Intersection Improvement
 US 30 5.01 miles E of SR 205 (at CR 500 E)
 RP 116+90 to RP 117+28
 Whitley County, Indiana



1:10,000

0 0.075 0.15 0.3 Miles

Legend	
State Routes	
Highways	
	Interstates
	State Routes
	US Routes
	Local Road

Sources: Imagery 2016 NAIP
 Columbia City, Indiana Quadrangle
 Township 31N, Range 10E, Section 21, 22

This map is intended to serve as an aid in graphic representation only. This information is not warranted for accuracy or other purposes.