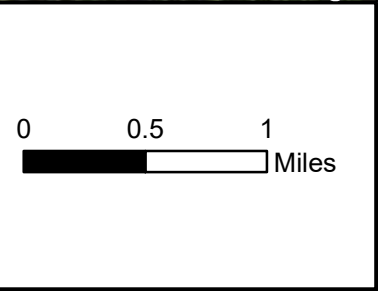
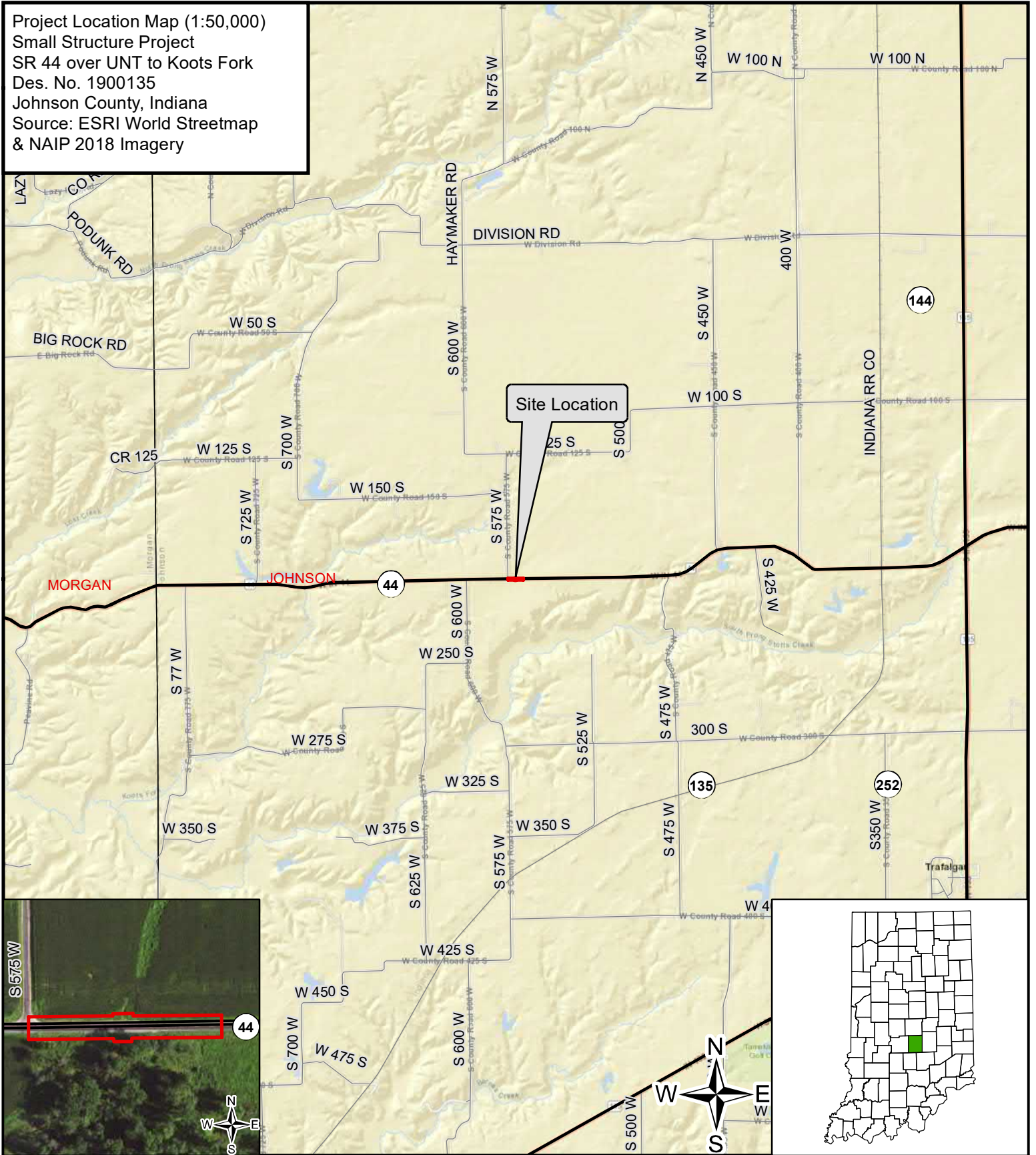


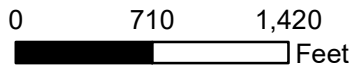
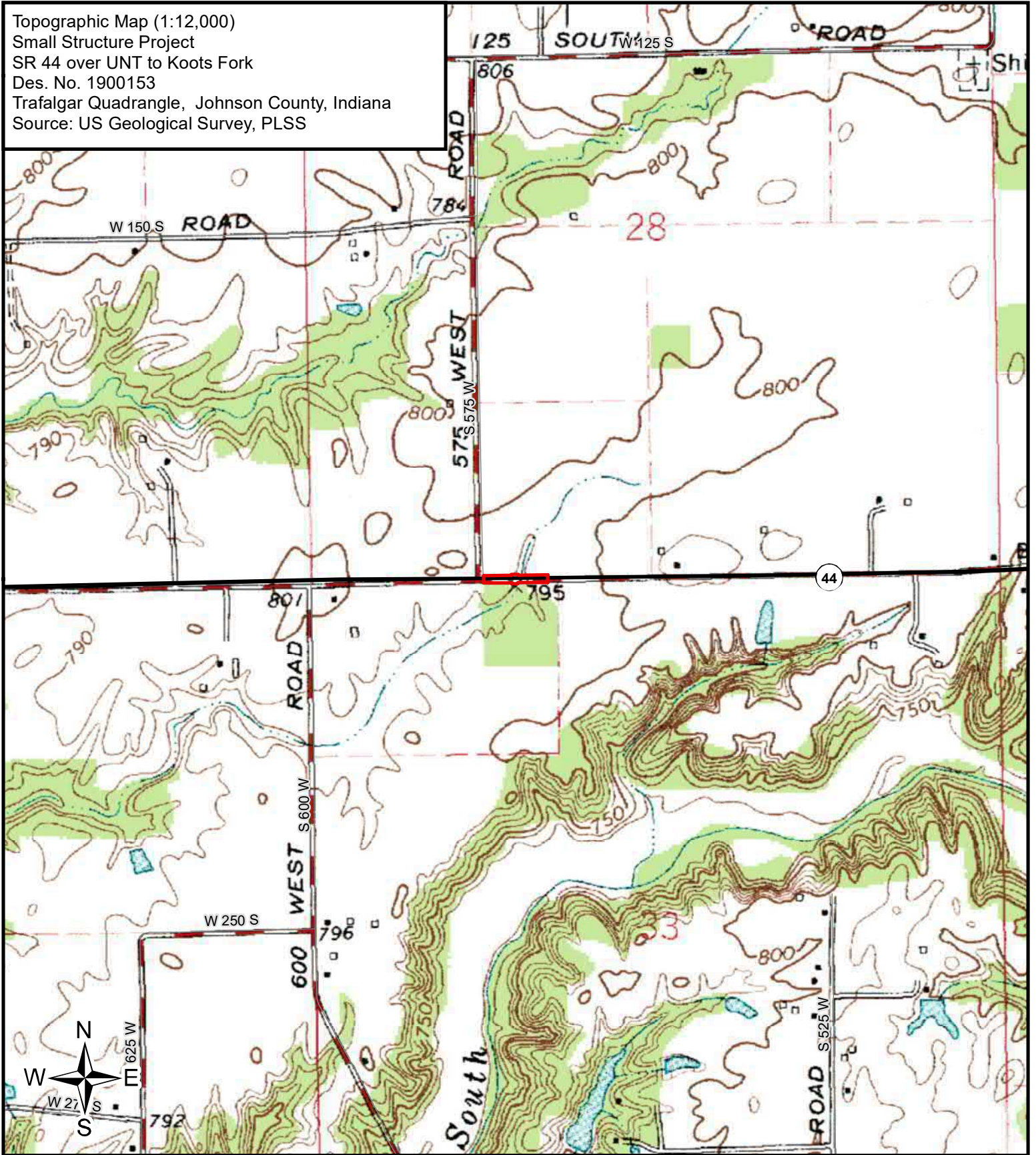
Project Location Map (1:50,000)
 Small Structure Project
 SR 44 over UNT to Koots Fork
 Des. No. 1900135
 Johnson County, Indiana
 Source: ESRI World Streetmap
 & NAIP 2018 Imagery



- Project Location
- County Boundary
- Project County



Topographic Map (1:12,000)
Small Structure Project
SR 44 over UNT to Koots Fork
Des. No. 1900153
Trafalgar Quadrangle, Johnson County, Indiana
Source: US Geological Survey, PLSS



— Project Location

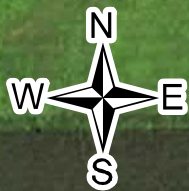


11/22/2021

Aerial Map (1:2,000)
Small Structure Project
SR 44 over UNT to Koots Fork
Des. No. 1900153
Johnson County, Indiana
Source: NAIP 2018 Imagery

S 57.5 W

44



National Agriculture Imagery Program (NAIP), Farm Services Agency (FSA), U.S. Department of Agriculture (USDA), UITS, Indiana Spatial Data Portal

0 110 220
Feet

— Project Location



11/22/2021