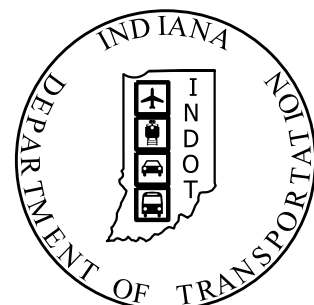


PROJECT	DESIGNATION
1900294	1900294
CONTRACT	BRIDGE FILE
R-42199	

**KIN PROJECT INFORMATION**

1900300	Slide Correction along SR 66 (Lead)
1900287	Slide Correction along SR 145
1900291	Slide Correction along SR 237
1900294	Slide Correction along SR 237
1900295	Slide Correction along SR 37
2001057	Culvert Replacement on SR 237

# INDIANA DEPARTMENT OF TRANSPORTATION

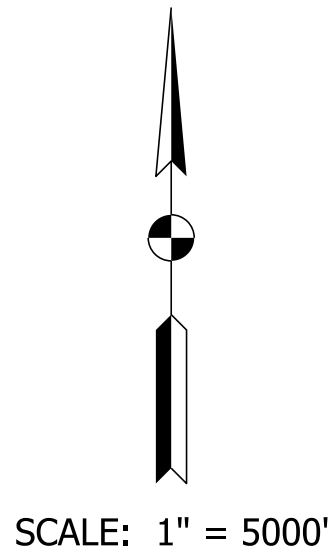
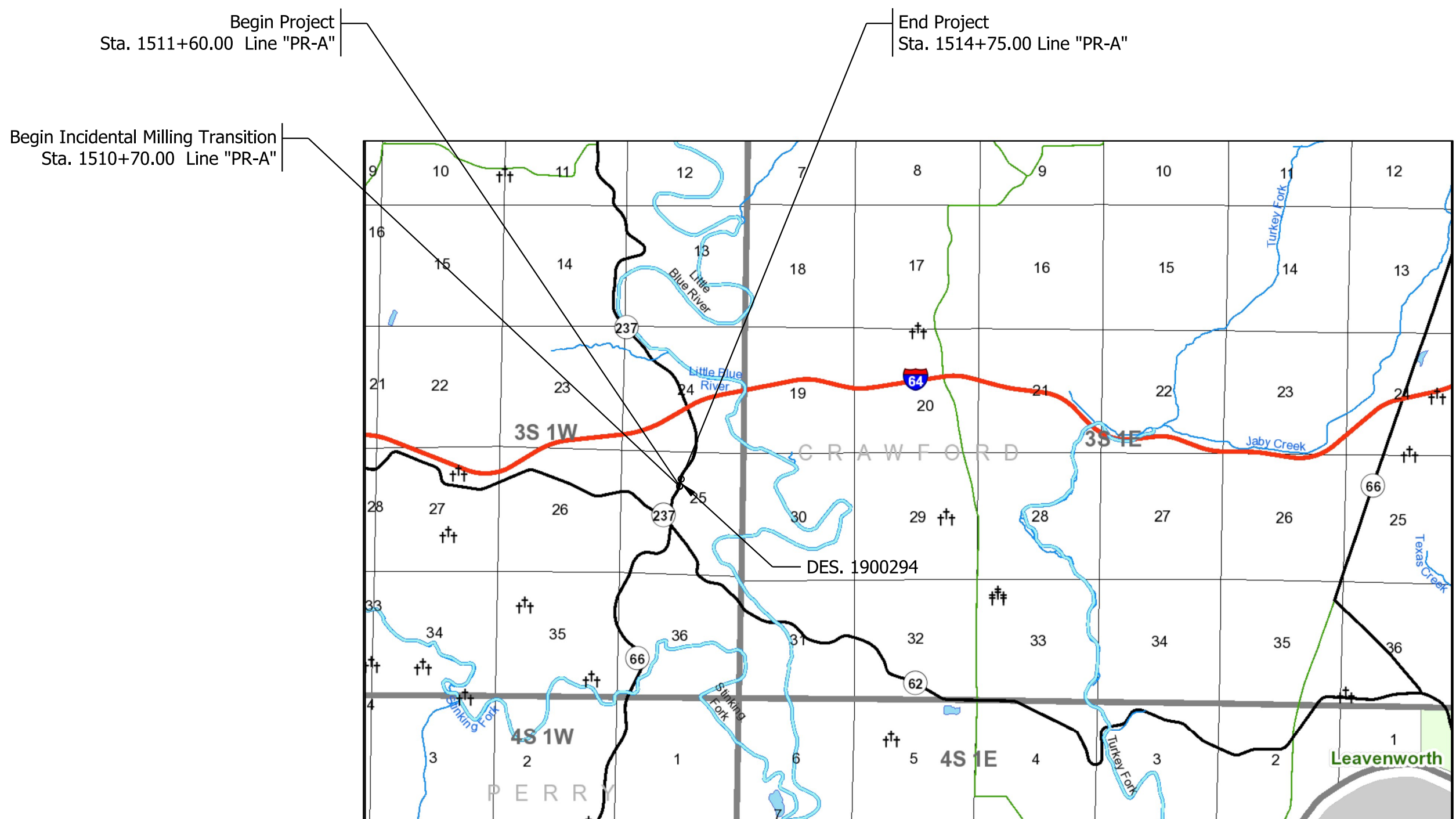


## ROAD PLANS FOR SLIDE REPAIR

ROUTE: SR 237 AT: RP 30+-1  
PROJECT NO. 1900294 P.E. P.E.  
1900294 R/W R/W  
1900294 CONST. CONST.

June 23, 2023  
STG3 Plans

Slide Repair SR 237  
Located 0.33 Miles North of the SR 62/SR 66 Junction  
Section 25, T-3-S, R-1-W, Union Township, Crawford County, Indiana



TRAFFIC DATA		
A.A.D.T. (2022)		703 V.P.D.
A.A.D.T. (2044)		727 V.P.D.
D.H.V (2044)		76 V.P.H.
DIRECTIONAL DISTRIBUTION		47/53 %
TRUCKS		5.01 % A.A.D.T. 9.59 % D.H.V.

DESIGN DATA	
DESIGN SPEED	45 M.P.H.
PROJECT DESIGN CRITERIA	3R (Non-Freeway)
FUNCTIONAL CLASSIFICATION	State Collector
RURAL/URBAN	Rural
TERRAIN	Rolling
ACCESS CONTROL	None

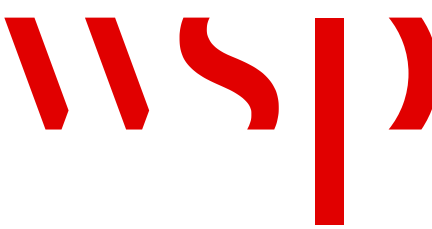


LATITUDE: 38°14'1.71"N LONGITUDE: 86°28'7.23"W

NET LENGTH:	0.060	MI.
GROSS LENGTH:	0.077	MI.
MAX. GRADE:	4.70%	%

HUC: 051401041105

INDIANA DEPARTMENT OF TRANSPORTATION  
STANDARD SPECIFICATIONS DATED 2024  
TO BE USED WITH THESE PLANS

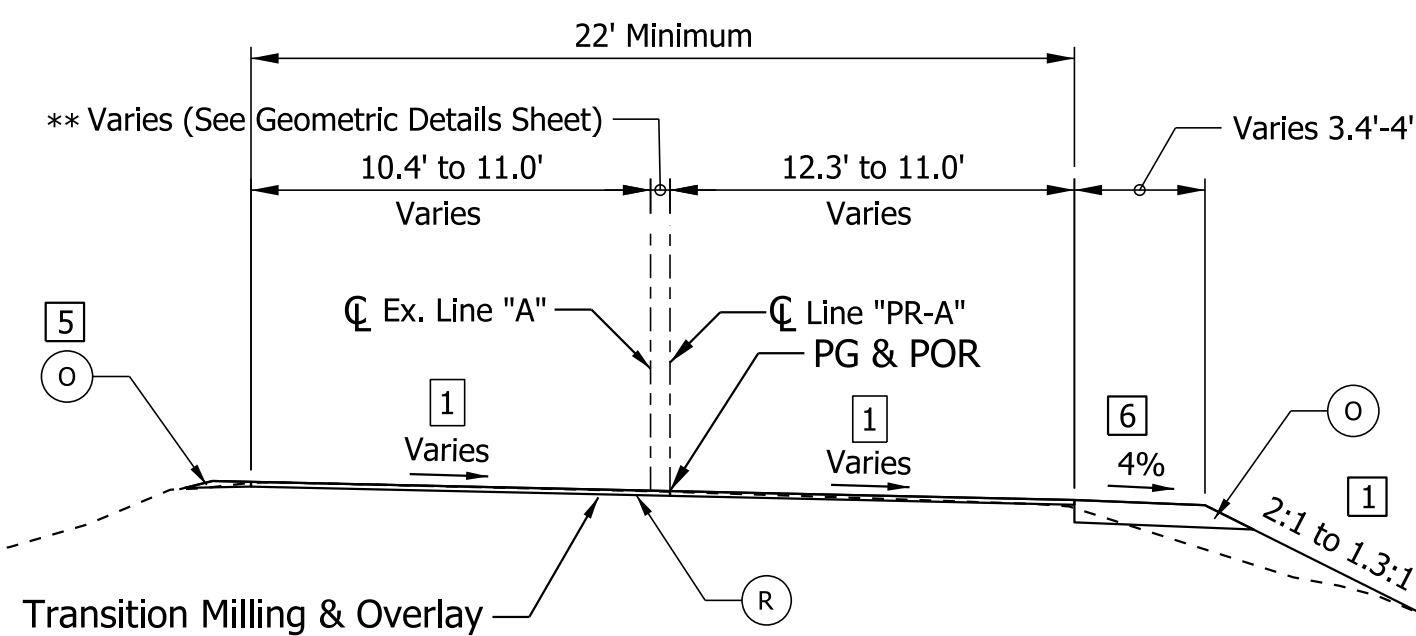


WSP USA Inc.  
115 W. Washington Street  
Suite 1270S  
Indianapolis, IN 46204  
TEL: 317-972-1706

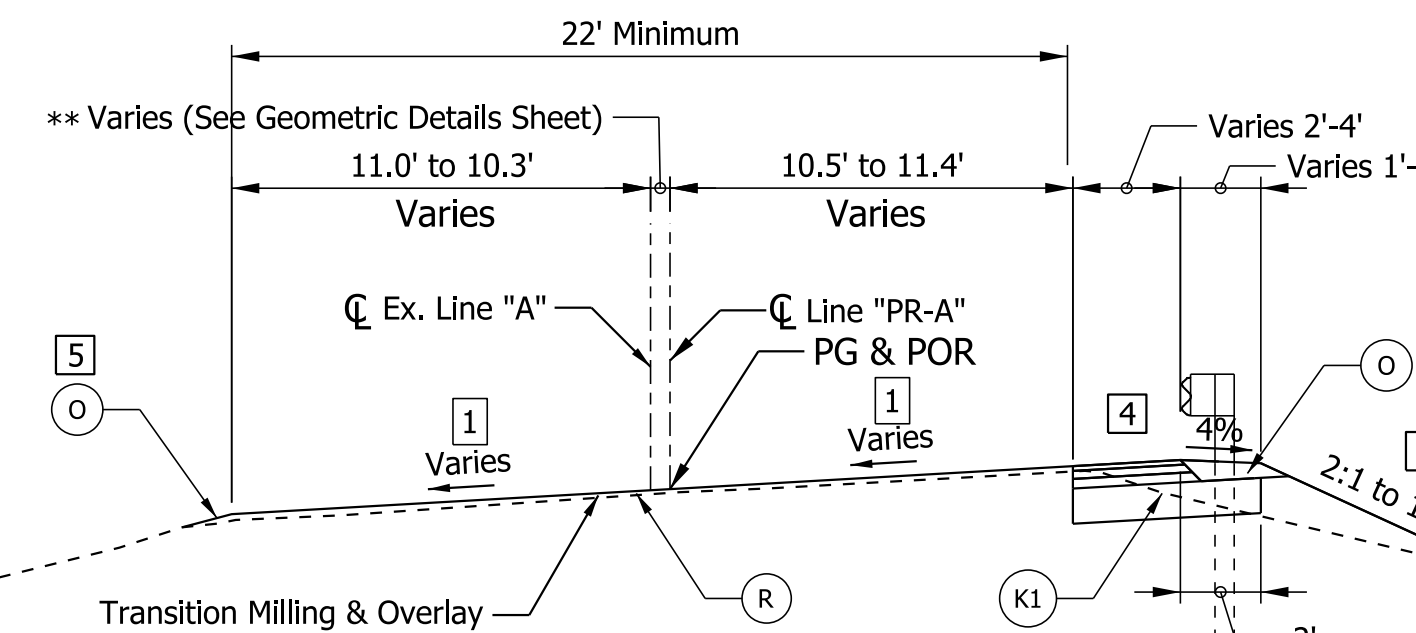
PLANS PREPARED BY:	WSP USA Inc.	317-972-1706 PHONE NUMBER
CERTIFIED BY:		DATE
APPROVED FOR LETTING:	INDIANA DEPARTMENT OF TRANSPORTATION	DATE

	BRIDGE FILE
	DESIGNATION
	1900294
SURVEY BOOK	SHEETS
	1 of 16
CONTRACT	PROJECT
R-42199	1900294

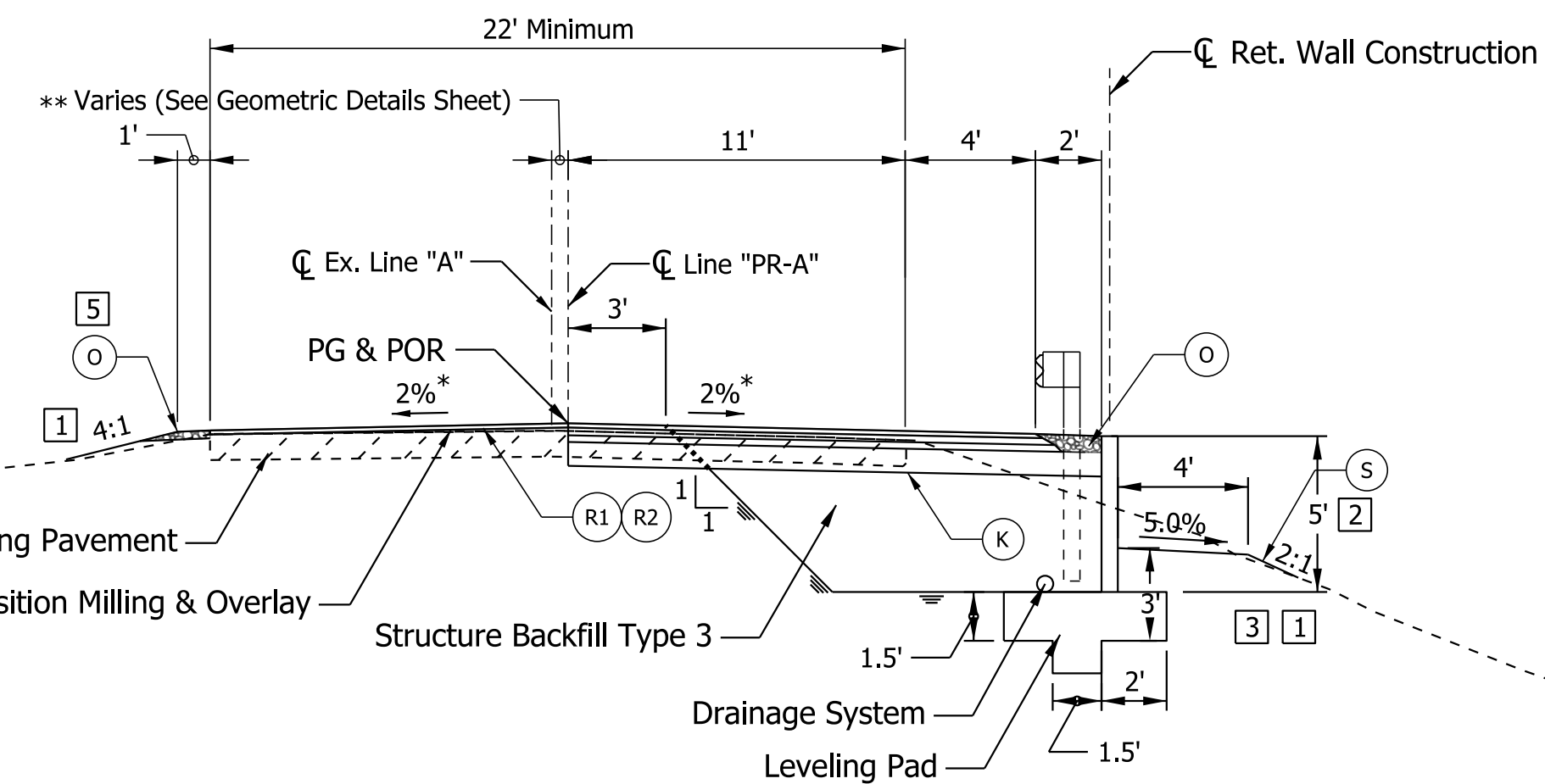




**TYPICAL INCIDENTAL PAVEMENT WITH AGGREGATE SHOULDER DES. 1900294**  
 Sta. 1510+70 to Sta. 1511+06.80  
 Sta. 1514+60 to Sta. 1514+75.00



**TYPICAL INCIDENTAL PAVEMENT AND SHOULDER WIDENING SECTION DES. 1900294**  
 Sta. 1511+06.80 to Sta. 1511+60  
 Sta. 1514+10 to Sta. 1514+60



**TYPICAL RETAINING WALL SECTION DES. 1900294**  
 Sta. 1511+60 to Sta. 1514+10  
 \*See Superelevation Diagram and Cross Sections for varied slopes.

**GRADED AGGREGATE SHOULDER WIDTHS [6]**

Station Line "PR-A"	Width	Location
1510+70.00 to 1511+06.80	2' to 4'	Right
1511+06.80 to 1511+60.00	1' to 2'	Right
1514+09.87 to 1514+60.00	2' to 1'	Right
1514+60.00 to 1514+75.00	4' to 3.4'	Right

**PAVED SHOULDER WIDTHS [4]**

Station Line "PR-A"	Width	Location
1511+06.80 to 1511+60.00	3' to 4'	Right
1514+10.00 to 1514+60.00	4' to 3'	Right

\*\* Due to variations of the Line "A" Centerline, the lane widths vary in reference to the Centerline but stay consistent relative to the crown point.

- [1] See Cross Sections for areas of varying slopes.
- [2] See Cross Sections for varied wall heights.
- [3] See Cross Sections for varied embedment depths.
- [4] Full Depth Shoulder Construction ends at Station 1515+10.00.
- [5] Compacted Aggregate depth based on pavement cross slope correction.

**LEGEND**

- (R) **Incidental Transition Milling**  
 Milling, Transition  
 1.5" of HMA Surface  
 165 lb/sys QC/QA-HMA, 3, 64, Surface, 9.5mm
- (K1) **Full Depth Shoulder Widening**  
 165 lb/yd<sup>2</sup> QC/QA-HMA, 3, 64, Surface, 9.5mm  
 Widening with HMA  
 275 lb/yd<sup>2</sup> HMA Intermediate, Type B  
 660 lb/yd<sup>2</sup> HMA Base, Type B  
 Subgrade Treatment, Type IC
- (K) **Full Depth Pavement**  
 165 lb/yd<sup>2</sup> QC/QA-HMA, 3, 64, Surface, 9.5mm  
 275 lb/yd<sup>2</sup> QC/QA-HMA, 3, 64, Intermediate, 19.0 mm  
 660 lb/yd<sup>2</sup> QC/QA-HMA, 3, 64, Base, 25.0 mm  
 Subgrade Treatment, Type IC
- (O) **Compacted Aggregate, No. 53**
- (R1) **HMA Resurface - Profile Grade Change 0"-1.5"**  
 Milling, Transition (up to 1.5") then  
 165 lb/yd<sup>2</sup> QC/QA-HMA, 3, 64, Surface, 9.5mm on existing pavement
- (R2) **HMA Resurface - Profile Grade Change 1.5"-4"**  
 Milling, Transition (up to 2.5") then  
 165 lb/yd<sup>2</sup> QC/QA-HMA, 3, 64, Surface, 9.5mm on  
 275 lb/yd<sup>2</sup> QC/QA-HMA, 3, 64, Intermediate, 19.0 mm on existing pavement
- (S) **Mulched Seeding, R**

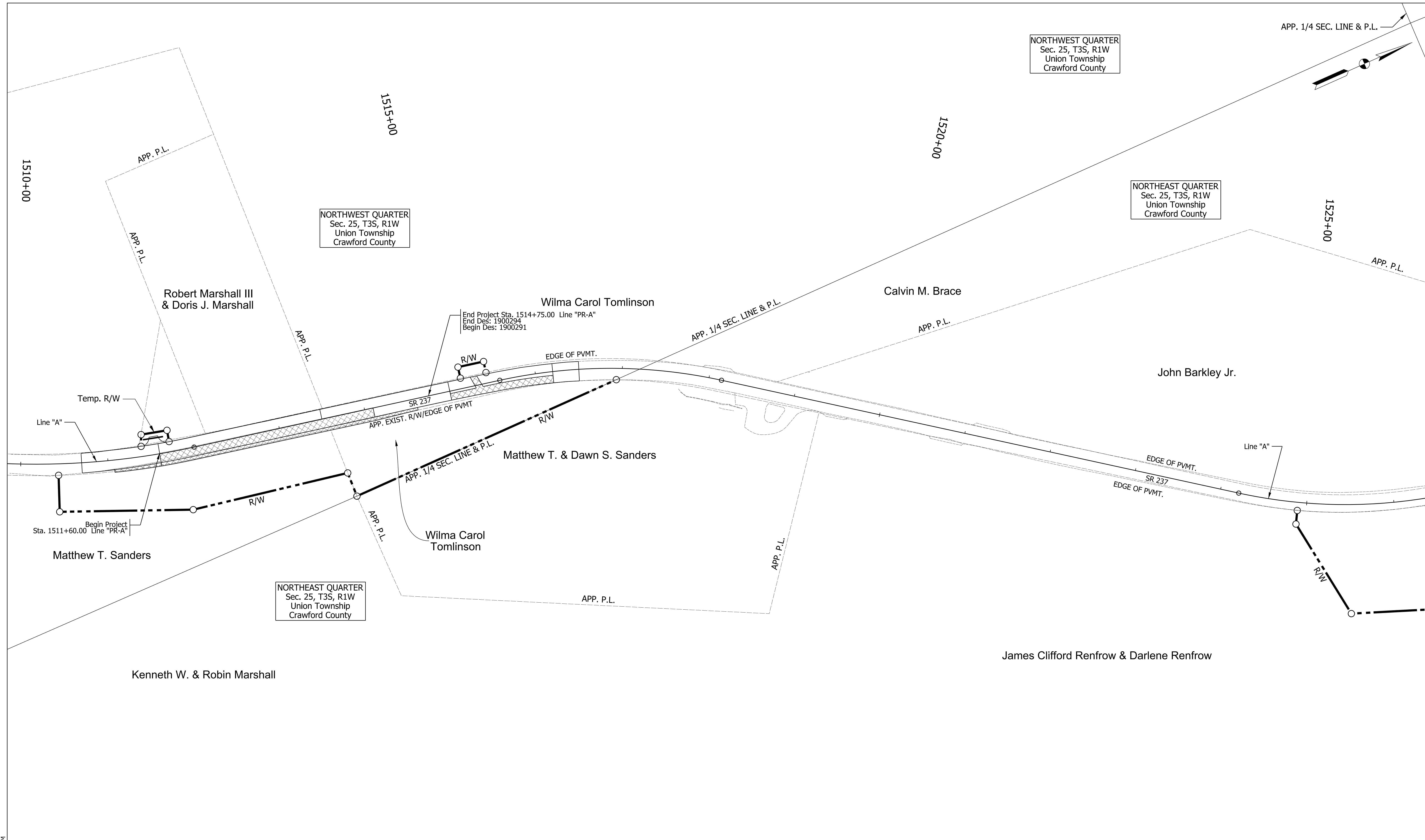
Plot: 6/23/2023 7:43 PM

RECOMMENDED FOR APPROVAL _____	DESIGN ENGINEER _____	DATE _____
DESIGNED: AB _____	DRAWN: PFV _____	
CHECKED: AJD _____	CHECKED: AB _____	

INDIANA  
DEPARTMENT OF TRANSPORTATION

SR 237  
LINE "PR-A"  
TYPICAL SECTIONS

HORIZONTAL SCALE 1" = 10'	BRIDGE FILE
VERTICAL SCALE 1" = 10'	DESIGNATION 1900294
SURVEY BOOK	SHEETS 3 of 16
CONTRACT R-42199	PROJECT 1900294



Plot: 6/23/2023 7:49 PM

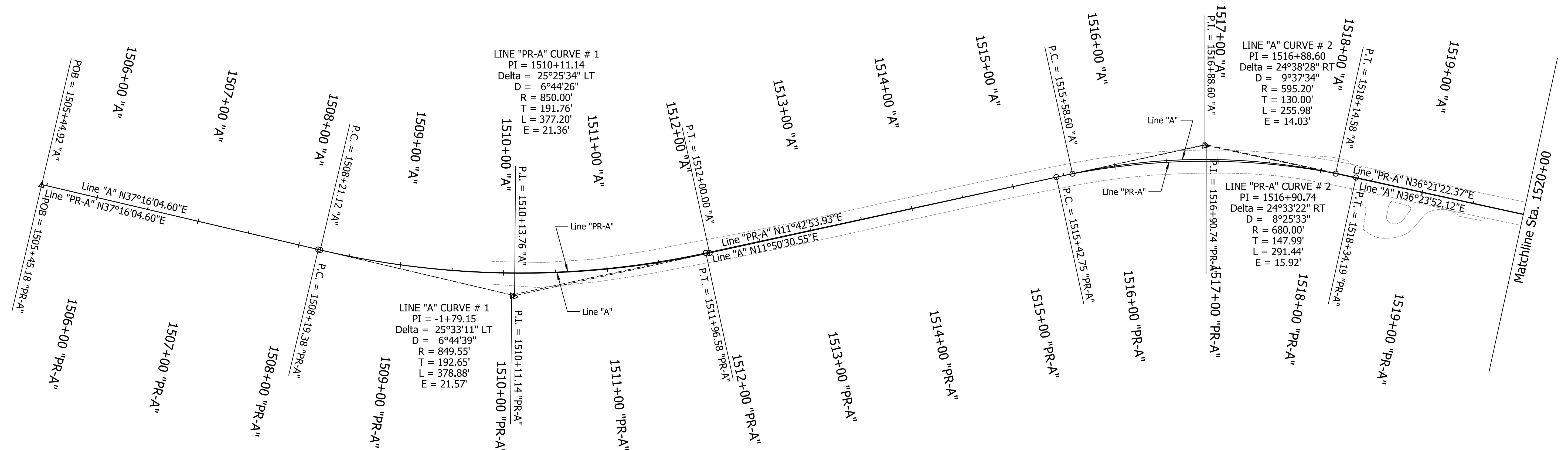
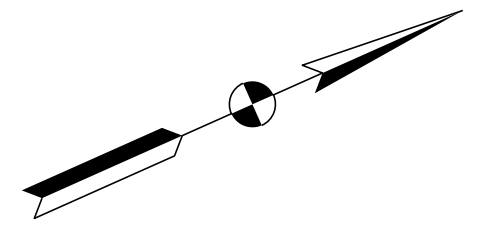
RECOMMENDED FOR APPROVAL _____	DESIGN ENGINEER _____	DATE _____
DESIGNED: AB _____	DRAWN: PFV _____	
CHECKED: AJD _____	CHECKED: AB _____	

**INDIANA  
DEPARTMENT OF TRANSPORTATION**

**SR 237  
PLAT NO. 1**

HORIZONTAL SCALE 1" = 50'	BRIDGE FILE
VERTICAL SCALE N/A	DESIGNATION 1900294
SURVEY BOOK	SHEETS 4 of 16
CONTRACT R-42199	PROJECT 1900294



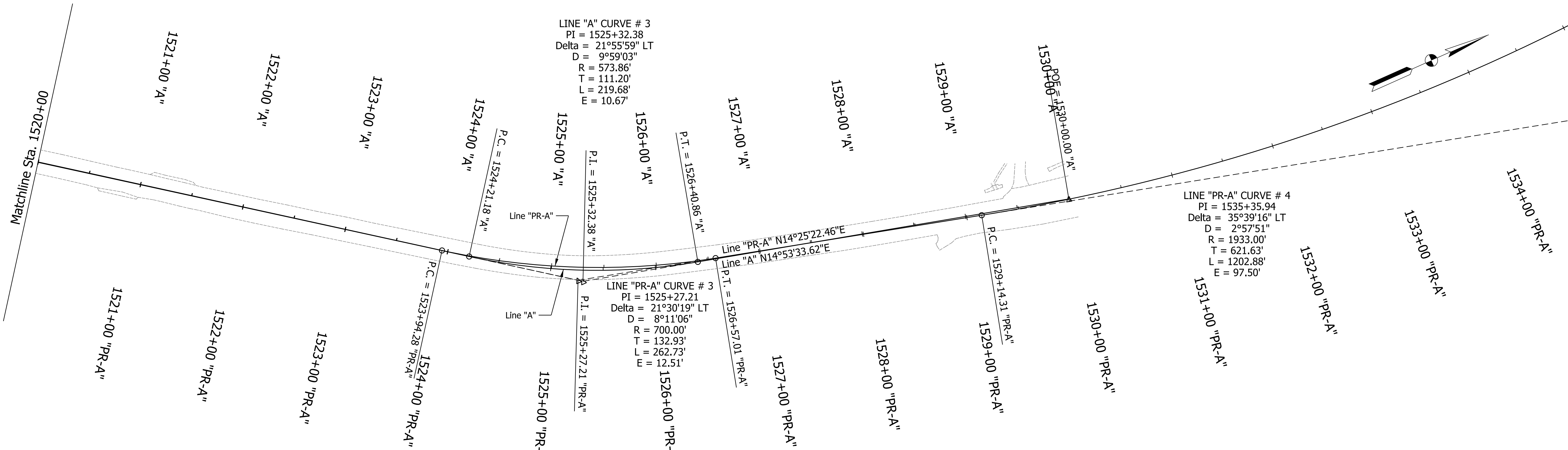


LINE "PR-A" CURVE # 1  
 PI = 1510+11.14  
 Delta = 25°25'34" LT  
 D = 6°44'26"  
 R = 850.00'  
 T = 191.76'  
 L = 377.20'  
 E = 21.36'

LINE "A" CURVE # 1  
 PI = -1+79.15  
 Delta = 25°33'11" LT  
 D = 6°44'39"  
 R = 849.55'  
 T = 192.65'  
 L = 378.88'  
 E = 21.57'

LINE "A" CURVE # 2  
 PI = 1516+88.60  
 Delta = 24°38'28" RT  
 D = 9°37'34"  
 R = 595.20'  
 T = 130.00'  
 L = 255.98'  
 E = 14.03'

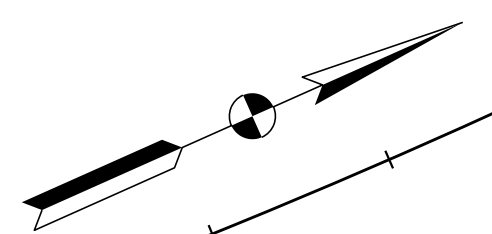
LINE "PR-A" CURVE # 2  
 PI = 1516+90.74  
 Delta = 24°33'22" RT  
 D = 8°25'33"  
 R = 680.00'  
 T = 147.99'  
 L = 291.44'  
 E = 15.92'



LINE "A" CURVE # 3  
 PI = 1525+32.38  
 Delta = 21°55'59" LT  
 D = 9°59'03"  
 R = 573.86'  
 T = 111.20'  
 L = 219.68'  
 E = 10.67'

LINE "PR-A" CURVE # 3  
 PI = 1525+27.21  
 Delta = 21°30'19" LT  
 D = 8°11'06"  
 R = 700.00'  
 T = 132.93'  
 L = 262.73'  
 E = 12.51'

LINE "PR-A" CURVE # 4  
 PI = 1535+35.94  
 Delta = 35°39'16" LT  
 D = 2°57'51"  
 R = 1933.00'  
 T = 621.63'  
 L = 1202.88'  
 E = 97.50'



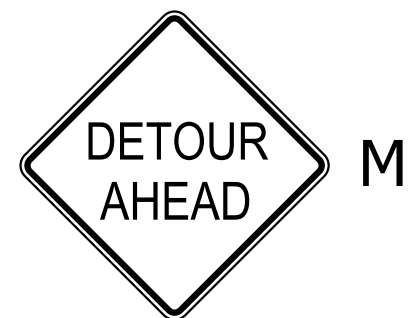
Plot: 6/23/2023 7:41 PM

RECOMMENDED FOR APPROVAL	DESIGN ENGINEER	DATE
DESIGNED: AB	DRAWN: PFV	
CHECKED: AJD	CHECKED: AB	

INDIANA  
DEPARTMENT OF TRANSPORTATION

SR 237  
GEOMETRIC DETAILS

HORIZONTAL SCALE	BRIDGE FILE
1" = 50'	
VERTICAL SCALE	DESIGNATION
N/A	1900294
SURVEY BOOK	SHEETS
	5 of 16
CONTRACT	PROJECT
R-42199	1900294



W20-2

M



W20-3

N



W20-3

O



W20-3

P

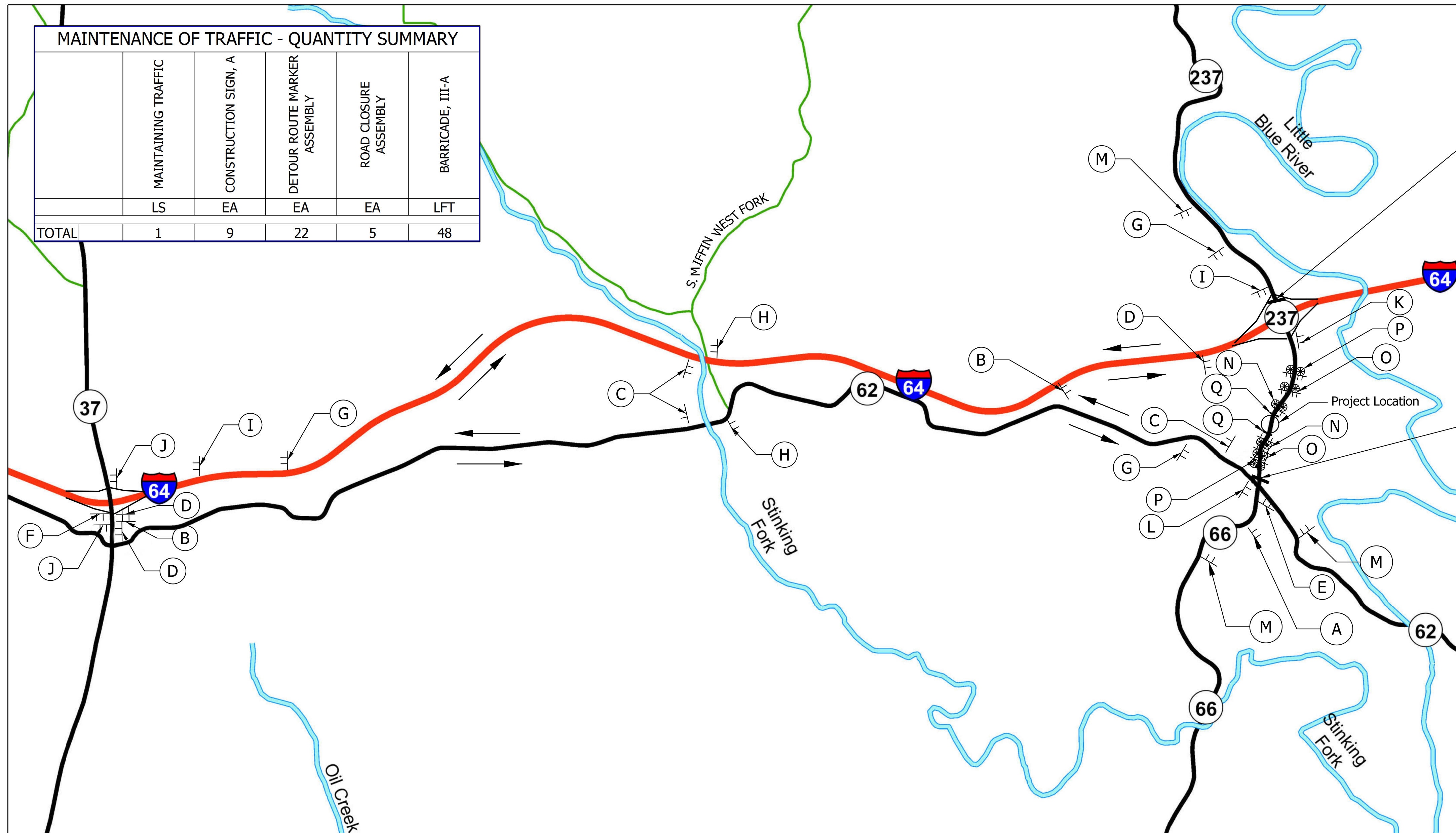


P

Q

24 ft Type III-A Barricades w/  
Road Closure Sign Assembly w/ R11-2

MAINTENANCE OF TRAFFIC - QUANTITY SUMMARY					
	MAINTAINING TRAFFIC	CONSTRUCTION SIGN, A	DETOUR ROUTE MARKER ASSEMBLY	ROAD CLOSURE ASSEMBLY	BARRICADE, III-A
	LS	EA	EA	EA	LFT
TOTAL	1	9	22	5	48

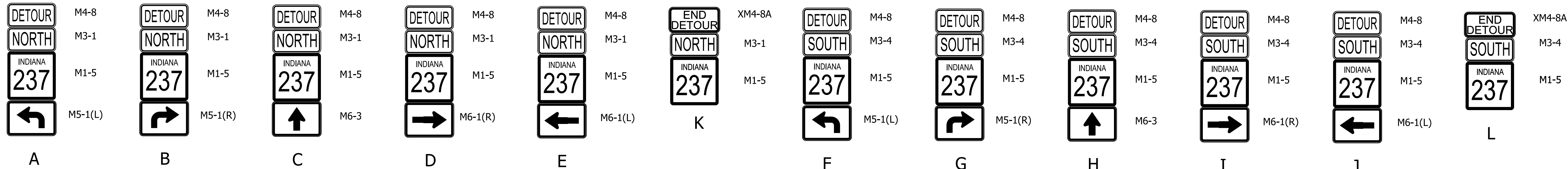


12 ft Type III-B Barricades w/  
Road Closure Sign Assembly w/  
R11-3a and M4-10(R)



1" = 2000'

12 ft Type III-B Barricades w/  
Road Closure Sign Assembly w/  
R11-3a and M4-10(R)



See INDOT Standard Drawings E 801-TCDT-01 and E 801-TCDT-04 for additional information and sign spacing.  
All signage shall be in accordance with the Indiana Manual on Uniform Traffic Control Devices.

Plot: 6/23/2023 7:48 PM

RECOMMENDED FOR APPROVAL	DESIGN ENGINEER	DATE
DESIGNED: AB	DRAWN: PFV	
CHECKED: AJD	CHECKED: AB	

INDIANA  
DEPARTMENT OF TRANSPORTATION

SR 237  
DETOUR SHEET

HORIZONTAL SCALE	BRIDGE FILE
1" = 2000'	
VERTICAL SCALE	DESIGNATION
N/A	1900294
SURVEY BOOK	SHEETS
	6 of 16
CONTRACT	PROJECT
R-42199	1900294



**BENCHMARK INFORMATION:**  
 BM #3  
 CHISELED SQUARE ON ROCK OUTCROP  
 Sta. 1512+01.13 Line "PR-A", 23.94' LT.

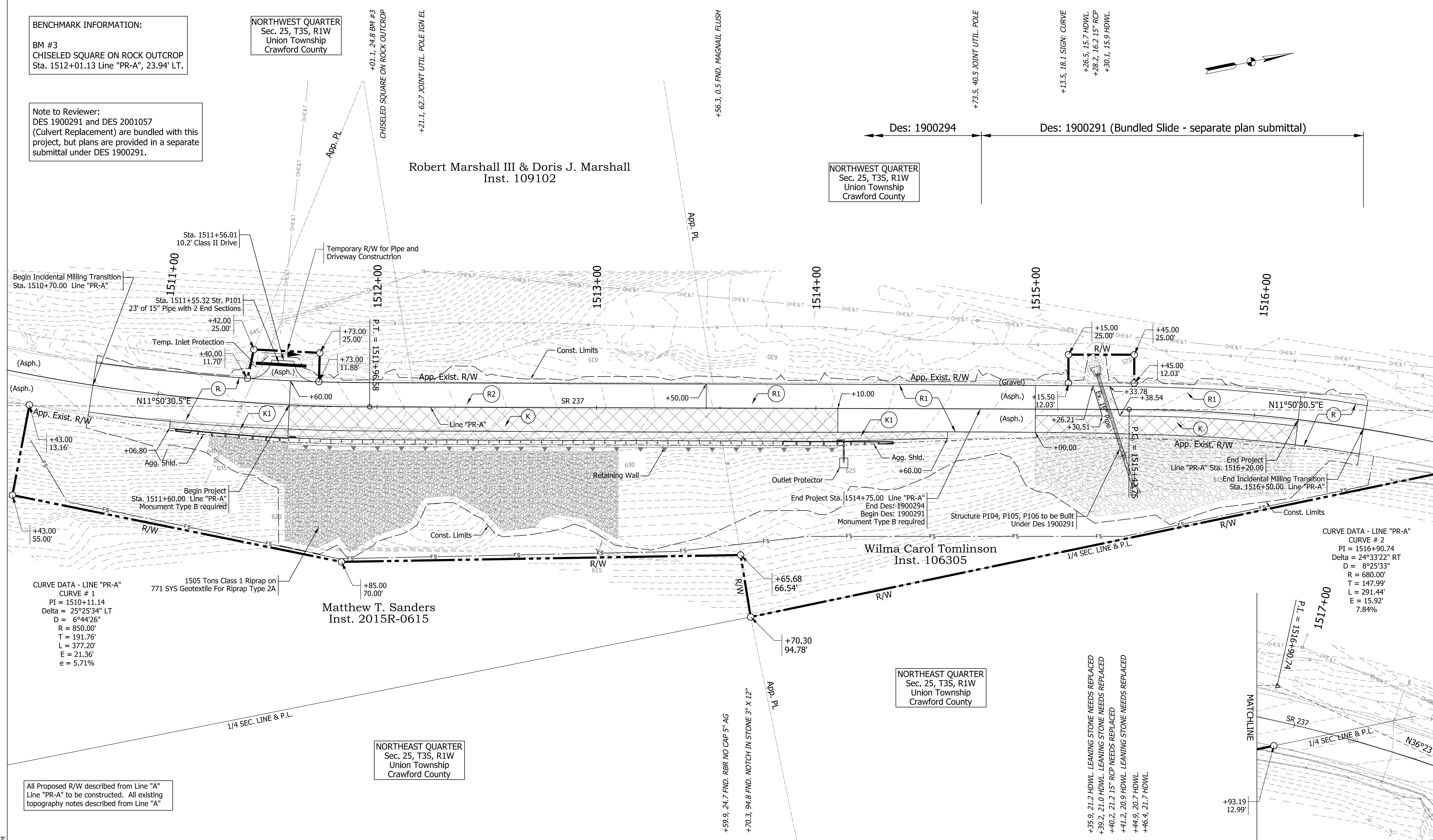
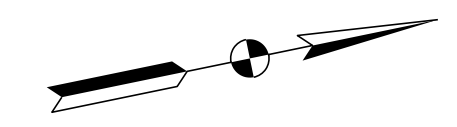
**NORTHWEST QUARTER**  
 Sec. 25, T3S, R1W  
 Union Township  
 Crawford County

**Note to Reviewer:**  
 DES 1900291 and DES 2001057  
 (Culvert Replacement) are bundled with this  
 project, but plans are provided in a separate  
 submittal under DES 1900291.

**Robert Marshall III & Doris J. Marshall**  
 Inst. 109102

**NORTHWEST QUARTER**  
 Sec. 25, T3S, R1W  
 Union Township  
 Crawford County

Des: 1900294      Des: 1900291 (Bundled Slide - separate plan submittal)



**CURVE DATA - LINE "PR-A"**  
 CURVE # 1  
 PI = 1510+11.14  
 Delta = 25°25'34" LT  
 D = 6°44'26"  
 R = 850.00'  
 T = 191.76'  
 L = 377.20'  
 E = 21.36'  
 e = 5.71%

**CURVE DATA - LINE "PR-A"**  
 CURVE # 2  
 PI = 1516+90.74  
 Delta = 24°33'22" RT  
 D = 8°25'33"  
 R = 680.00'  
 T = 147.99'  
 L = 291.44'  
 E = 15.92'  
 e = 7.84%

All Proposed R/W described from Line "A"  
 Line "PR-A" to be constructed. All existing  
 topography notes described from Line "A"

**NORTHEAST QUARTER**  
 Sec. 25, T3S, R1W  
 Union Township  
 Crawford County

**NORTHEAST QUARTER**  
 Sec. 25, T3S, R1W  
 Union Township  
 Crawford County

Legend		
	(R1) Transition Milling 0"-1.5"	(R) Incidental Transition Milling
	(R2) Transition Milling 1.5"-4"	
	(K1) Full Depth Shoulders	(K) Full Depth Pavement

RECOMMENDED FOR APPROVAL	DESIGN ENGINEER	DATE
DESIGNED: AB	DRAWN: PFV	
CHECKED: AJD	CHECKED: AB	

**INDIANA**  
**DEPARTMENT OF TRANSPORTATION**

**SR 237**  
**LINE "PR-A"**  
**PLAN**

HORIZONTAL SCALE	BRIDGE FILE
1" = 20'	
VERTICAL SCALE	DESIGNATION
N/A	1900294
SURVEY BOOK	SHEETS
	7 of 16
CONTRACT	PROJECT
R-42199	1900294

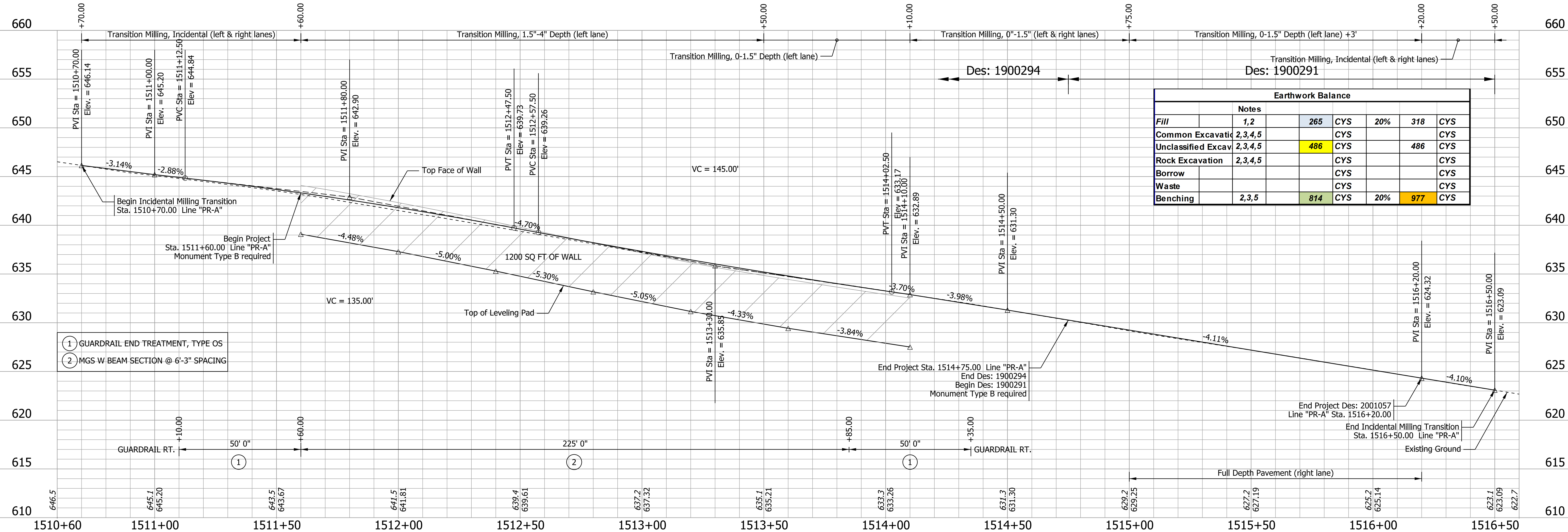
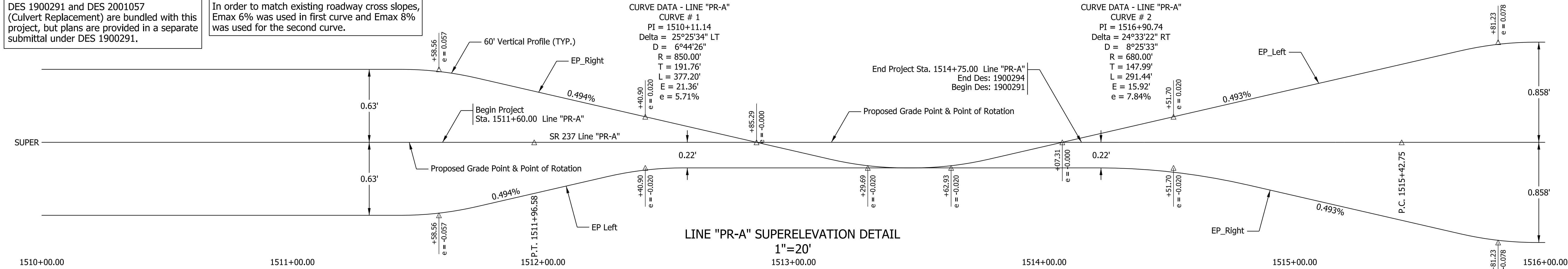
Plot: 6/23/2023 8:25 PM

Note to Reviewer:  
DES 1900291 and DES 2001057  
(Culvert Replacement) are bundled with this  
project, but plans are provided in a separate  
submittal under DES 1900291.

Note to Reviewer.  
In order to match existing roadway cross slopes,  
Emax 6% was used in first curve and Emax 8%  
was used for the second curve.

CURVE DATA - LINE "PR-A"  
CURVE # 1  
PI = 1510+11.14  
Delta = 25°25'34" LT  
D = 6°44'26"  
R = 850.00'  
T = 191.76'  
L = 377.20'  
E = 21.36'  
e = 5.71%

CURVE DATA - LINE "PR-A"  
CURVE # 2  
PI = 1516+90.74  
Delta = 24°33'22" RT  
D = 8°25'33"  
R = 680.00'  
T = 147.99'  
L = 291.44'  
E = 15.92'  
e = 7.84%



Earthwork Balance					
	Notes				
Fill	1,2	265	CYS	20%	318
Common Excavation	2,3,4,5		CYS		
Unclassified Excavation	2,3,4,5	486	CYS		486
Rock Excavation	2,3,4,5		CYS		
Borrow			CYS		
Waste			CYS		
Benching	2,3,5	814	CYS	20%	977

- ① GUARDRAIL END TREATMENT, TYPE OS
- ② MGS W/ BEAM SECTION @ 6'-3" SPACING

Note:  
All stations based on Line "PR-A"

RECOMMENDED FOR APPROVAL \_\_\_\_\_  
DESIGN ENGINEER \_\_\_\_\_ DATE \_\_\_\_\_  
DESIGNED: AB DRAWN: PFV  
CHECKED: AJD CHECKED: AB

INDIANA  
DEPARTMENT OF TRANSPORTATION  
SR 237 LINE "PR-A"  
PROFILE AND SUPERELEVATION DIAGRAM

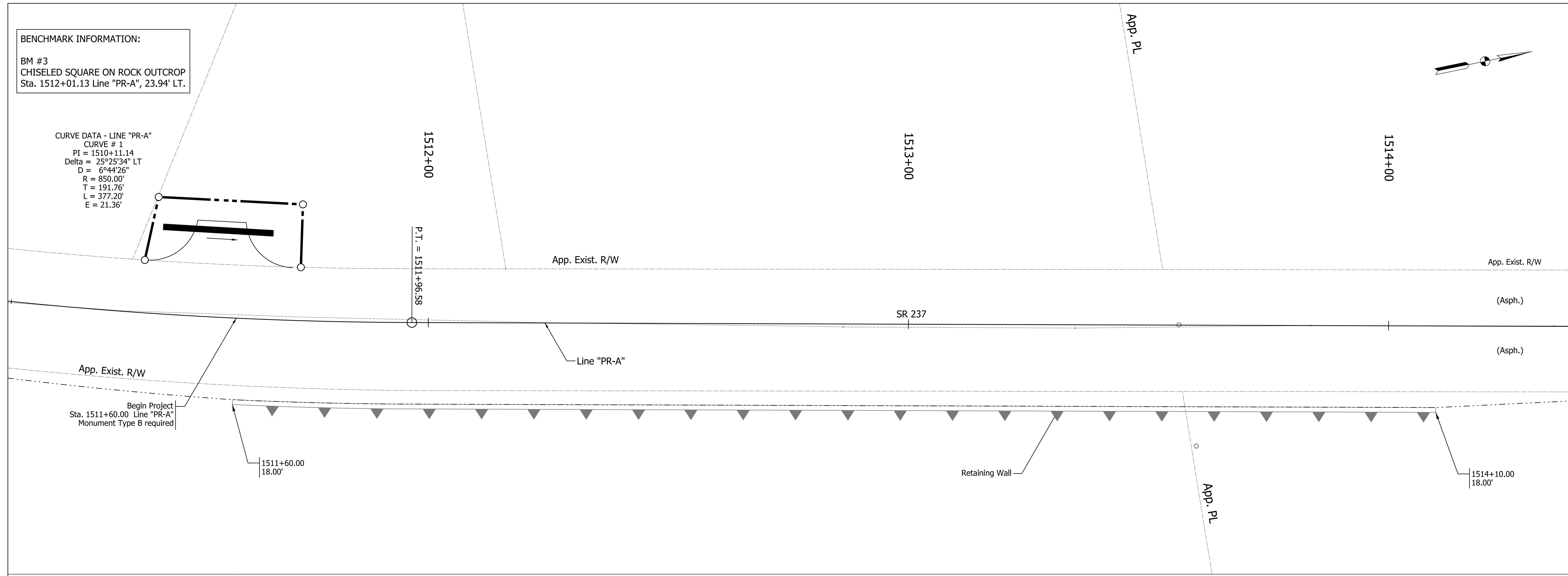
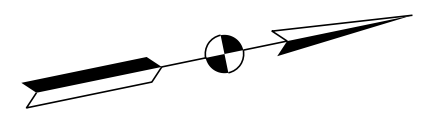
HORIZONTAL SCALE 1" = 20'	BRIDGE FILE
VERTICAL SCALE 1" = 5'	DESIGNATION 1900294
SURVEY BOOK	SHEETS 8 of 16
CONTRACT R-42199	PROJECT 1900294

Plot: 6/23/2023 7:49 PM



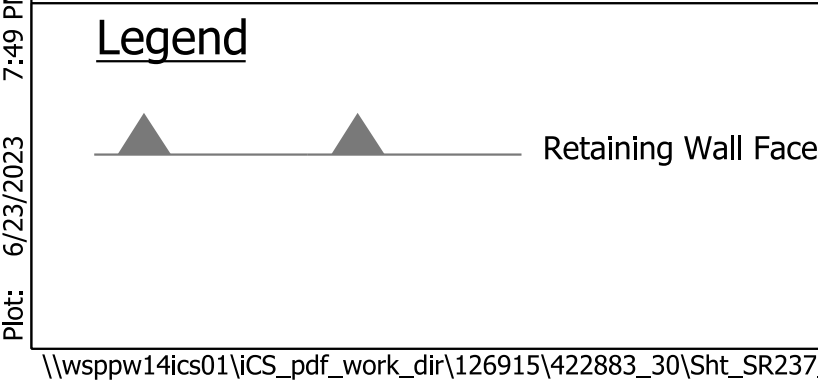
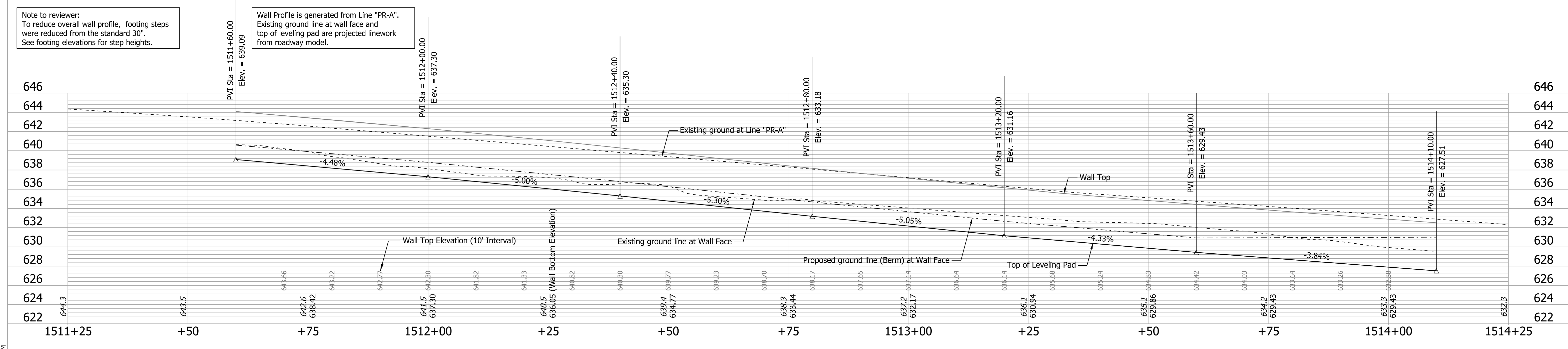
**BENCHMARK INFORMATION:**  
 BM #3  
 CHISELED SQUARE ON ROCK OUTCROP  
 Sta. 1512+01.13 Line "PR-A", 23.94' LT.

**CURVE DATA - LINE "PR-A"**  
 CURVE # 1  
 PI = 1510+11.14  
 Delta = 25°25'34" LT  
 D = 6°44'26"  
 R = 850.00'  
 T = 191.76'  
 L = 377.20'  
 E = 21.36'



Note to reviewer:  
 To reduce overall wall profile, footing steps were reduced from the standard 30". See footing elevations for step heights.

Wall Profile is generated from Line "PR-A". Existing ground line at wall face and top of leveling pad are projected linework from roadway model.



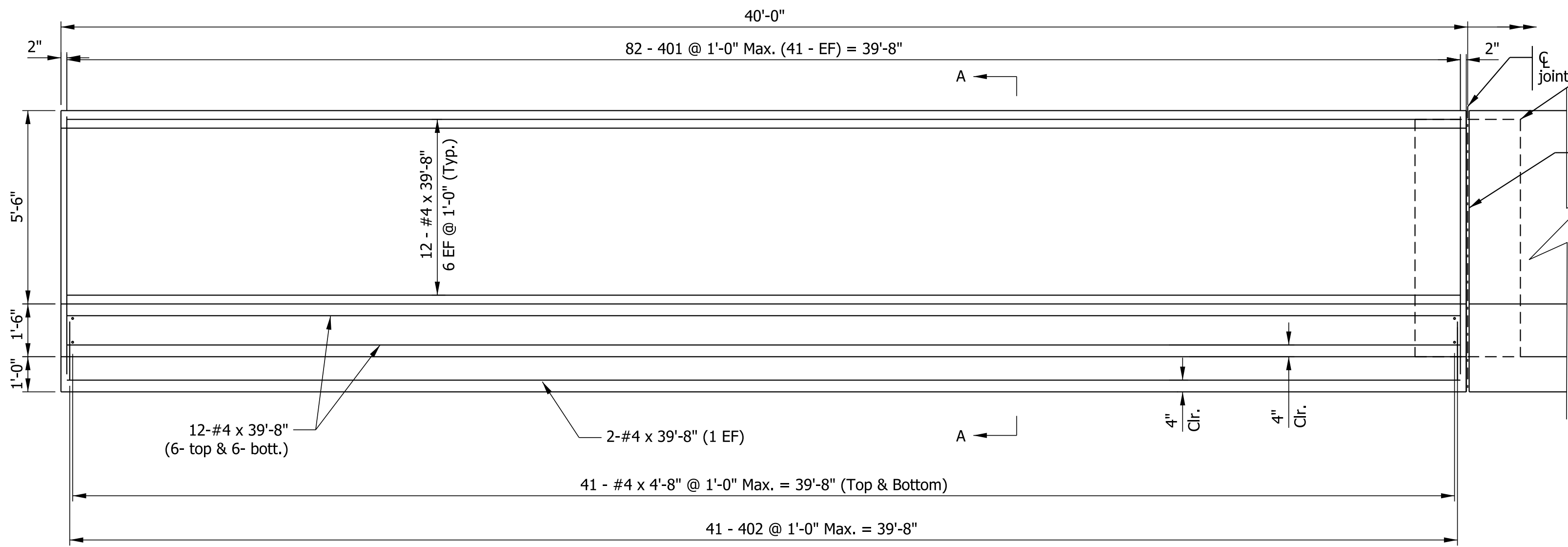
RECOMMENDED FOR APPROVAL	DESIGN ENGINEER	DATE
DESIGNED: AB	DRAWN: PFV	
CHECKED: AJD	CHECKED: AB	

**INDIANA  
DEPARTMENT OF TRANSPORTATION**

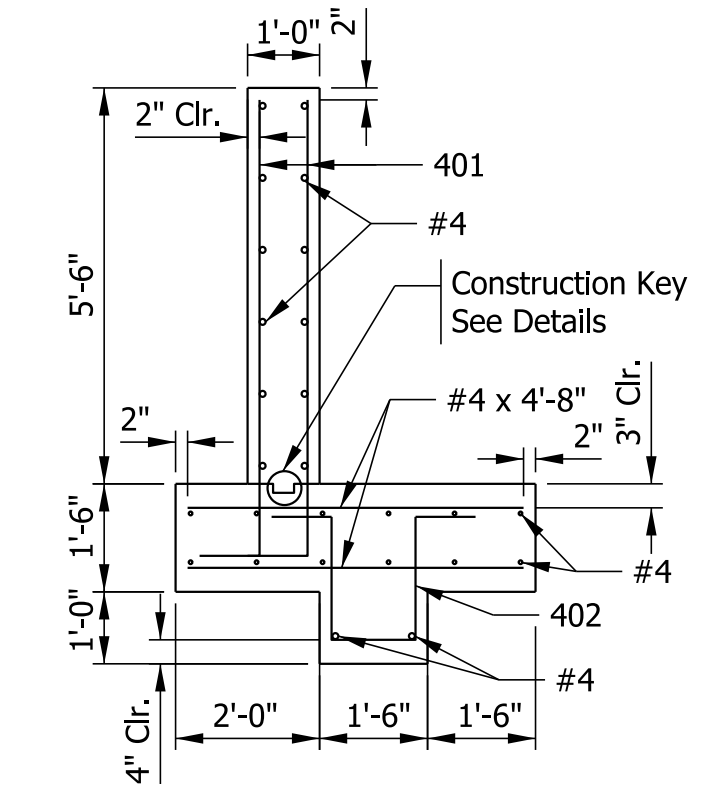
**RETAINING WALL  
PLAN AND PROFILE**

HORIZONTAL SCALE 1" = 10'	BRIDGE FILE
VERTICAL SCALE 1" = 5'	DESIGNATION 1900294
SURVEY BOOK	SHEETS 9 of 16
CONTRACT R-42199	PROJECT 1900294

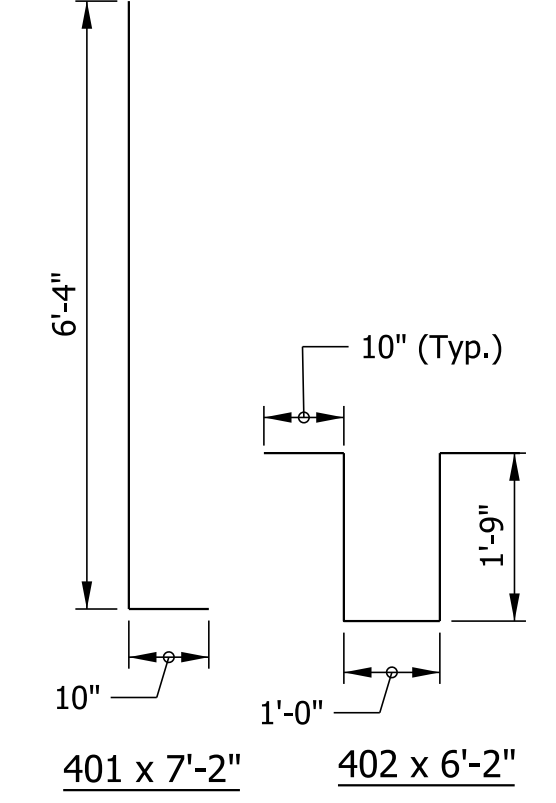
Plot: 6/23/2023 7:49 PM



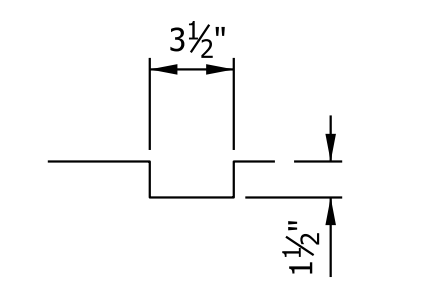
**WALL ELEVATION**  
Sta. 1511+60.00 to Sta. 1513+60.00  
(Typical 40'-0" Section - 5 Required)  
Scale: 3/8" = 1'-0"



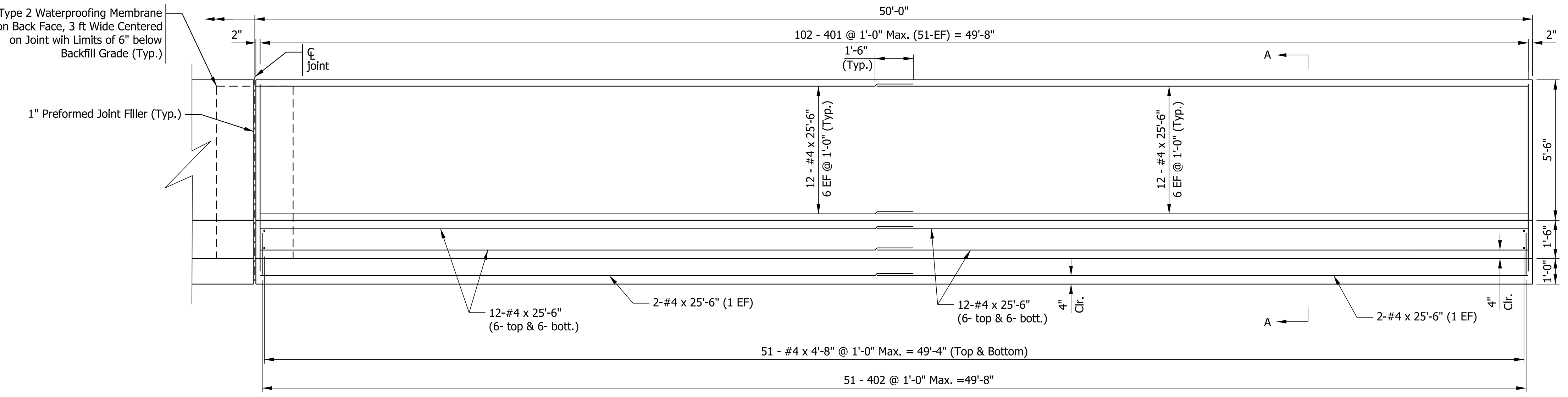
**SECTION A-A**  
Scale: 3/8" = 1'-0"



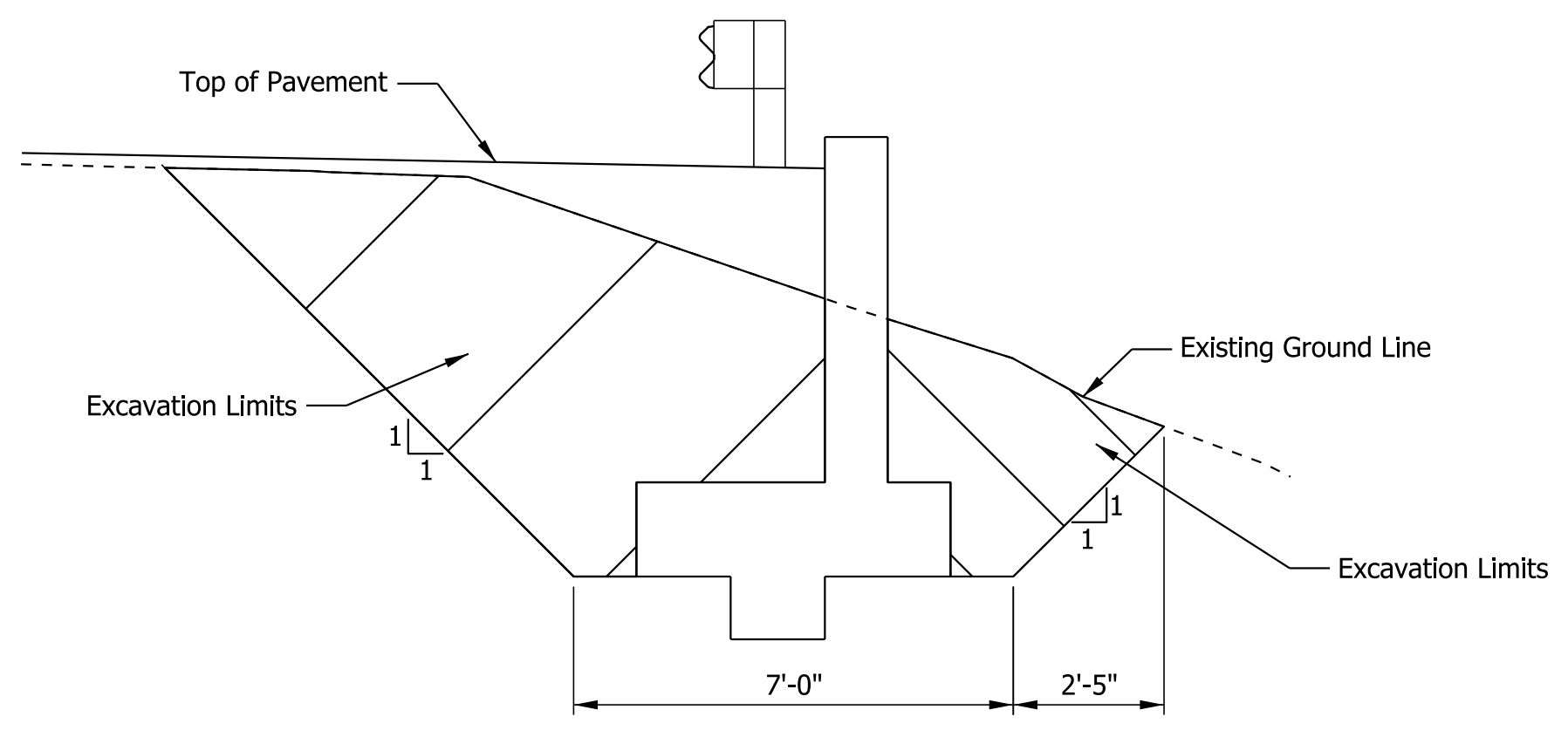
**BAR BENDING DETAILS**  
Scale: 1" = 1'-0"



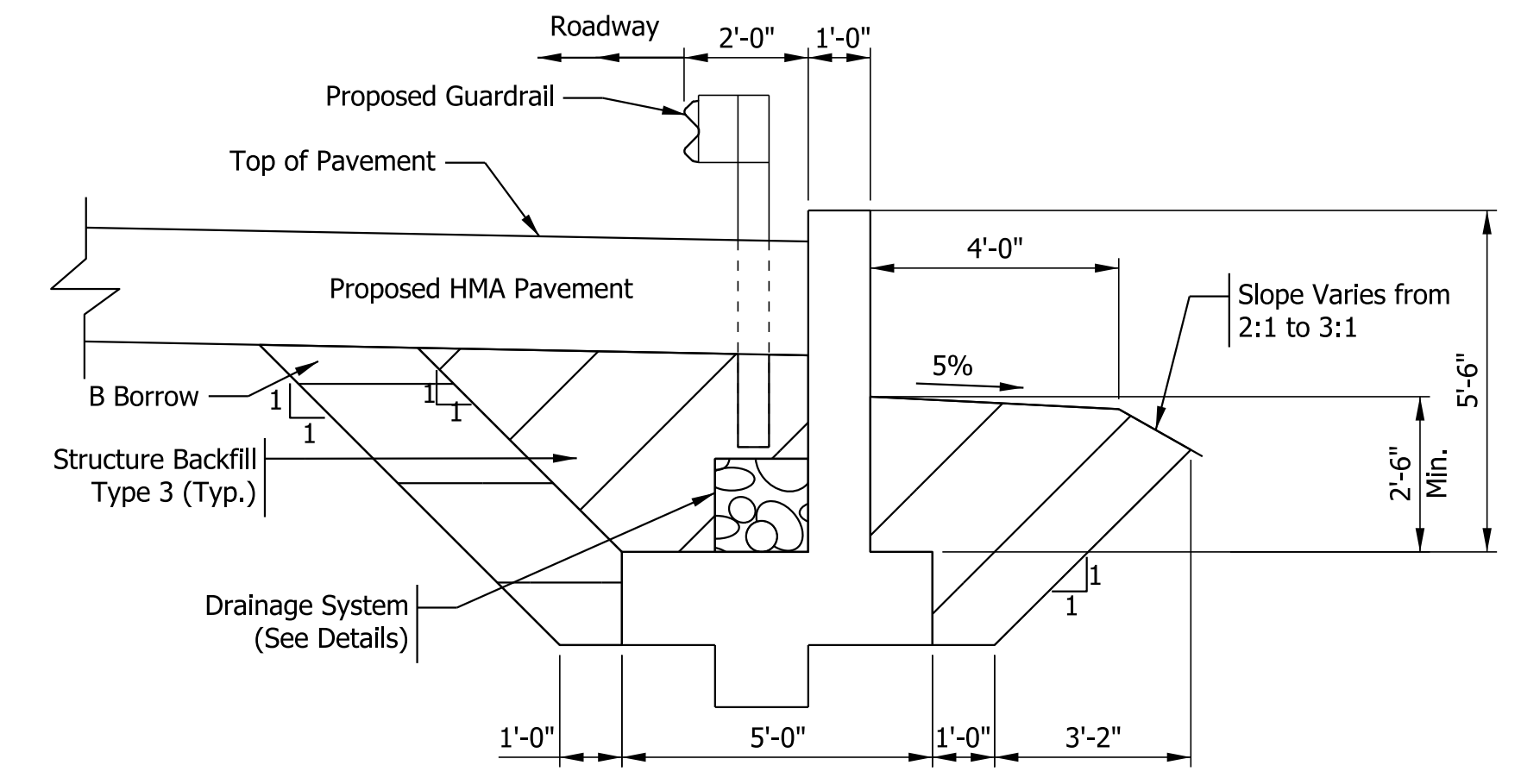
**CONSTRUCTION KEY DETAIL**  
Scale: 1 1/2" = 1'-0"



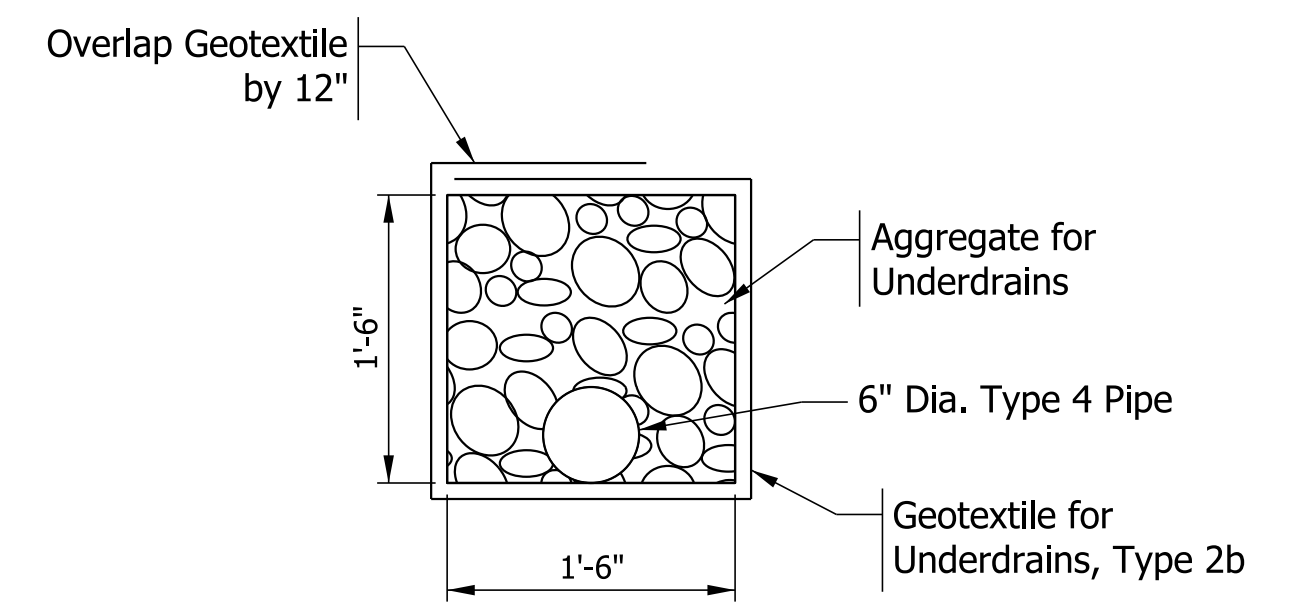
**WALL ELEVATION**  
Sta. 1513+60.00 to Sta. 1514+10.00  
(50'-0" Section - 1 Required)  
Scale: 3/8" = 1'-0"



**Excavation Limits**  
Scale: 3/8" = 1'-0"



**Backfill Limits**  
Scale: 3/8" = 1'-0"



**RETAINING WALL DRAINAGE DETAIL**  
Scale: 1" = 1'-0"

BILL OF MATERIALS			
CAST-IN-PLACE RETAINING WALL			
REINFORCING BARS			
MARK OR SIZE	NO. OF BARS	LENGTH (FT.-IN.)	WEIGHT (LBS)
401	512	7'-2"	2454
402	256	6'-2"	1056
#4	256	4'-8"	799
#4	52	25'-6"	886
#4	130	39'-8"	3445
Total #5			8640
CONCRETE			
Class A Concrete			52 CYS
Class B Concrete			83 CYS
MISCELLANEOUS			
Pipe, Type 4, Circular, 6 IN.			250 LFT
Aggregate for Underdrain			21 CYS
Outlet Protector Type 2			1 EA
Geotextile for Underdrain, Type 2b			195 SYS

RECOMMENDED FOR APPROVAL	DESIGN ENGINEER	DATE
DESIGNED: RV	DRAWN: RV	
CHECKED: MA	CHECKED: MA	

INDIANA DEPARTMENT OF TRANSPORTATION	
<b>RETAINING WALL DETAILS</b>	

SCALE	BRIDGE FILE
AS SHOWN	DESIGNATION
	1900294
DRAWING NUMBER	SHEETS
of	10 of 16
CONTRACT	PROJECT
R-42199	1900294



### PAVEMENT QUANTITIES AND APPROACH TABLE

LOCATION	STATION		DESCRIPTION (APPROACH TYPE OR CLASS)	AVERAGE WIDTH		LENGTH	QC/QA-HMA, 3, 64, SURFACE, 9.5 mm	QC/QA-HMA, 3, 64, INTERMEDIATE, 19.0 mm	QC/QA-HMA, 3, 64, BASE, 25.0 mm	SUBGRADE TREATMENT, TYPE IC	WIDENING WITH HMA, TYPE B	HMA FOR APPROACHES, TYPE B	COMPACTED AGGREGATE NO.53	SEAL COAT, 5	ASPHALT FOR TACK COAT	LIQUID ASPHALT SEALANT	JOINT ADHESIVE SURFACE	JOINT ADHESIVE INTERMEDIATE	MILLING, TRANSITION, UP TO 1.5"	MILLING, TRANSITION, UP TO 2.5"	PAVEMENT REMOVAL	REMARKS			
				Travel Lane*	Shoulder*	"L"																			
				(FT)	(FT)	(FT)	(TON)	(TON)	(TON)	(SYS)	(TON)	(TON)	(SYS)	(SYS)	(LFT)	(LFT)	(LFT)	(SYS)	(SYS)	(SYS)					
SR 237 - Line "PR-A"																									
<b>Transition Milling, Incidental</b>	1510+70.00	to	1511+60.00	Roadway	21.63		90.00	18						216	90	90		216							
<b>Transition Milling, 0-1.5" Depth</b>	1513+50.00	to	1514+10.00	Roadway	11.00		60.00	19						230	125	125		230							
	1514+10.00		1514+75.00		21.72	65.00																			
<b>Transition Milling, 1.5"-4" Depth</b>	1511+60.00	to	1513+50.00	Roadway	11.00		190.00	20	32					464	190	190	190		232						
<b>Full Depth Shoulder Widening</b>	1511+06.80	to	1511+60.00	Roadway		4.61	53.20	4		71	23			97	103	103	103				Right				
	1514+10.00	to	1514+60.00		3.79	50.00																			
<b>Full Depth Reconstruction</b>	1511+60.00	to	1514+10.00	Roadway	15.00	4	250.00	35	195	138	417			833	250	250	250								
<b>Drive Construction</b>	1511+40.62	to	1511+71.37	Class II Drive	10.10		9.00					3.3	7	15	31	31					15	Left			
<b>Compacted Aggregate No. 53</b>	1510+70.00	to	1514+75.00	Roadway		1.00	405.00					69	141								Left				
	1510+70.00	to	1511+06.80		3.40	36.80																		Right	
	1511+06.80	to	1511+60.00		1.50	53.20																			Right
	1511+60.00	to	1514+10.00		2.00	250.00																			Right
	1514+10.00	to	1514+75.00		2.50	65.00																Right			
*Shoulders and Travel lane widths combined in some instances																									
						TOTAL	96	227	138	488	23	3.3	76	141	1856	789	789	543	446	232	15				

Plot: 6/23/2023 7:43 PM

RECOMMENDED FOR APPROVAL _____ DESIGN ENGINEER _____ DATE _____	<b>INDIANA DEPARTMENT OF TRANSPORTATION</b>	HORIZONTAL SCALE N/A VERTICAL SCALE N/A	BRIDGE FILE DESIGNATION 1900294
DESIGNED: AB CHECKED: AJD	DRAWN: PFV CHECKED: AB	<b>SUMMARY OF QUANTITIES</b>	
		SURVEY BOOK CONTRACT R-42199	SHEETS 11 of 16 PROJECT 1900294

LOCATION		W-BEAM GUARDRAIL LENGTH														CURVED W-BEAM GUARDRAIL SYSTEM				REMARKS			
FROM STATION	TO STATION	LEFT	MEDIAN LEFT	MEDIAN RIGHT	RIGHT	STANDARD POST AT 6 FT 3 IN. SPA.	TOP MOUNTED POST AT 6 FT 3 IN. SPA.	STANDARD POST AT 3 FT 1.5 IN. SPA.	DOUBLE FACED AT 6 FT 3 IN. SPA.	DOUBLE FACED AT 3 FT 1.5 IN. SPA.	SHOP CURVED AT _____ FT. SPA.	NESTING GUARDRAIL	GUARDRAIL FLARE RATE	GUARDRAIL TRANSITION (42.5') TYPE MGS/NO CURB	GUARDRAIL TRANSITION (37.5') TYPE MGS/HEIGHT	GUARDRAIL MGS, STRUCTURE TOP-MOUNTED POST	GUARDRAIL END TREATMENT TYPE OS	GUARDRAIL MGS, STRUCTURE, TOP-MOUNTED POST	TERMINAL SYSTEM		CONNECTOR SYSTEM	GUARDRAIL REMOVE	GUARDRAIL END TREATMENT REMOVE
						LFT	LFT	LFT	LFT	LFT	LFT	EACH	EACH	EACH	EACH	EACH	EACH	EACH	EACH		EACH	EACH	EACH
1511+10.00	1514+35				X	225.00											2						
TOTALS						225.00											2						

MONUMENT TABLE		
STATION	OFFSET	MONUMENT
1511+60.00	0'	"B"
1514+75.00	0'	"B"

R/W MARKER TABLE	
STATION	OFFSET
1510+43.00	13.16' RT
1510+43.00	55.00' RT
1511+85.00	70.00' RT
1513+65.68	66.54' RT
1513+70.30	94.78' LT
1516+93.19	12.99' LT

SUMMARY OF QUANTITIES												
ITEM	CONSTRUCTION ENGINEERING	MOBILIZATION AND DEMOBILIZATION	CLEARING RIGHT OF WAY	STRUCTURE BACKFILL, TYPE 3	MONUMENT, B	RIPRAP, CLASS 1	GEOTEXTILE FOR RIPRAP TYPE 2A	MOBILIZATION AND DEMOBILIZATION FOR SEEDING	FERTILIZER	SEED MIXTURE, R	MULCHING MATERIAL	FIELD OFFICE, A
	LS	LS	LS	CYS	EACH	TON	SYS	EACH	TON	LBS	TON	MOS
TOTAL	1	1	1	257	2	1505	1456	1	0.01	6.11	0.12	6.00

PAVEMENT MARKINGS SUMMARY TABLE		
LOCATION	LINE, PAINT	
	SOLID WHITE	SOLID YELLOW
	6 in	6 in
Sta. 1510+70.00 to Sta. 1514+75.00	810	810
TOTALS	810	810

STRUCTURE DATA - DRAINAGE																																					
STRUCTURE NUMBER	LOCATION					DESCRIPTION	FLOW LINE										SCOUR PROTECTION						GRATED BOX END SECTION			SAFETY METAL END SECTION			CONNECT TO STR.	REMARKS							
	STATION	LEFT	RIGHT	CROSS	OFFSET		SIZE	PIPE TYPE	MANHOLE, INLET, CATCH BASIN, OR SPECIALTY STRUCTURE AND TYPE	LENGTH	VIDEO INSPECTION LENGTH	SKEW	TOP OF CASTING	COVER	FLOW LINE		SERVICE LIFE	SITE DESIGNATION	pH	BACKFILL METHOD	STRUCTURE BACKFILL	TYPE	FLOWABLE BACKFILL	TYPE	GEOTEXTILE FOR RIPRAP TYPE 2A	REVETMENT RIPRAP	SCOUR PROTECTION				PIPE REMOVE	CATCH BASIN REMOVE	PIPE END SECTION	GRATED BOX END SECTION		SAFETY METAL END SECTION	
															UP STREAM	DOWN STREAM											SUMP DEPTH	GEOTEXTILE						RIPRAP	EA.	EA.	TYPE
P101	Line "PR-A" 1511+55.32	X			18.15	15	3		23					640.08	639.66				1	4	3						5		22					4:1	2		
							3		23										1	4	3						5		22						2		

Plot: 6/23/2023 7:43 PM

RECOMMENDED FOR APPROVAL _____ DESIGN ENGINEER _____ DATE _____	<b>INDIANA DEPARTMENT OF TRANSPORTATION</b>	HORIZONTAL SCALE N/A	BRIDGE FILE
DESIGNED: AB DRAWN: PFV		VERTICAL SCALE N/A	DESIGNATION 1900294
CHECKED: AJD CHECKED: AB	<b>SUMMARY OF QUANTITIES</b>	SURVEY BOOK	SHEETS 12 of 16
		CONTRACT R-42199	PROJECT 1900294