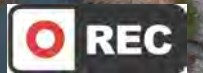


I-465 Northwest Improvements Study

Community Advisory Committee (CAC)
Meeting #2

October 13, 2022



Recorded Session

Community Advisory Committee Meeting #2

- Welcome & Introductions
- CAC Member Role & Benefits
- Regional Projects
- Project Overview
- Environmental Study Process
- Project Need & Objectives
- Questions & Discussions



Please note: the data reviewed is preliminary, and the maps shown are in draft form

Project Team Introductions



Jonathan Wallace, PMP
INDOT Project Manager



Mark Perron, P.E.
Consultant Project Manager



Adin McCann, P.E.
Environmental Lead



Alex Lee, AICP
Public Involvement Lead



Community Advisory Committee (CAC) Members

Include:

- Local Governments
- Indianapolis Metropolitan Planning Organization (IMPO)
- Economic Development Organizations
- Community & Civic Groups
- Churches
- Social Service Organizations
- Area Businesses & Schools
- Transit Providers
- Emergency Service Providers



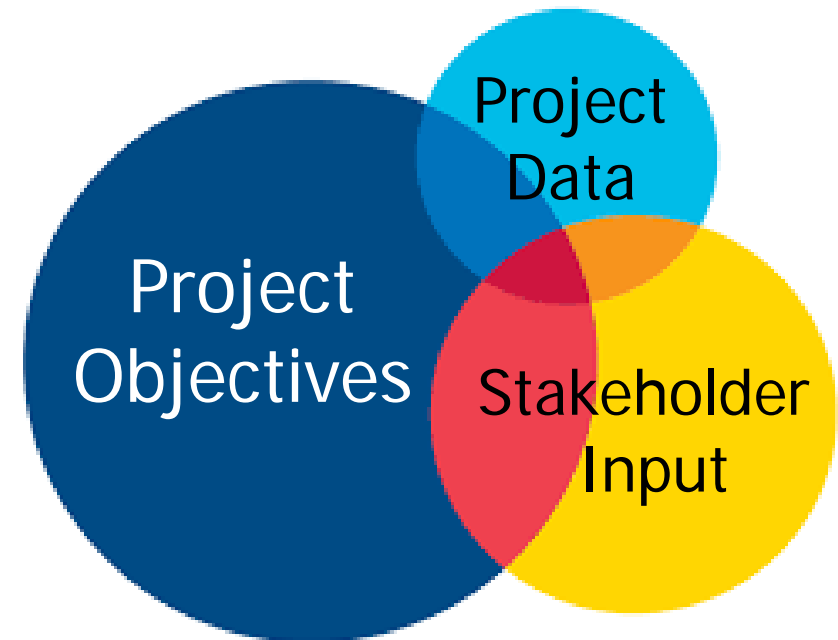
Role of the CAC

- Provide input throughout the process
- Serve as a “sounding board” for the community throughout project development
- Ensure that local issues are identified and considered
- Engage in collaborative problem-solving



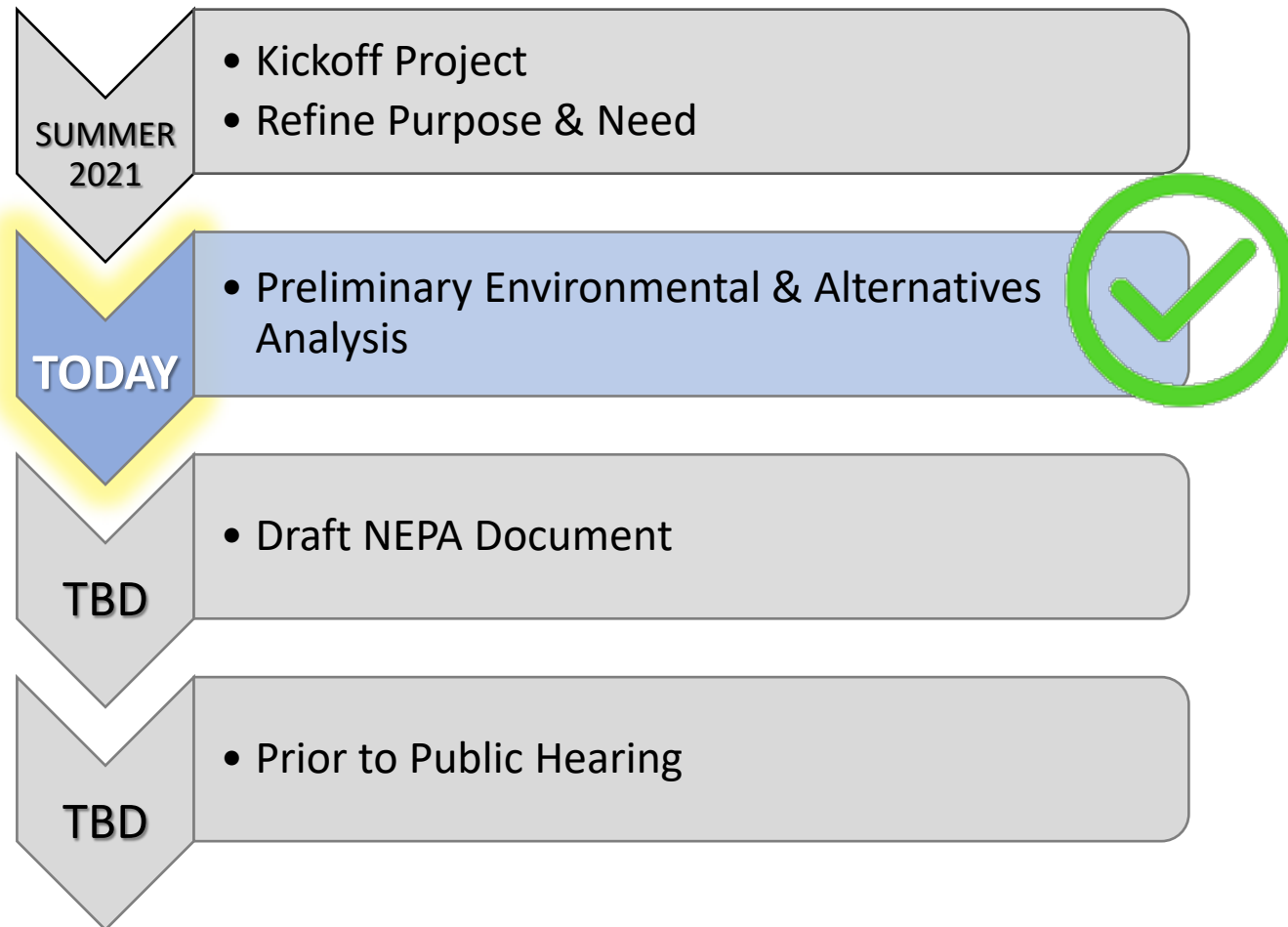
Benefits of the CAC

- Encourages understanding of stakeholder issues and perspectives
- Promotes open, constructive dialog between stakeholders
- Fosters collaborative and creative problem-solving
- Builds community support for the project
- Provides recommendations into the decision-making process



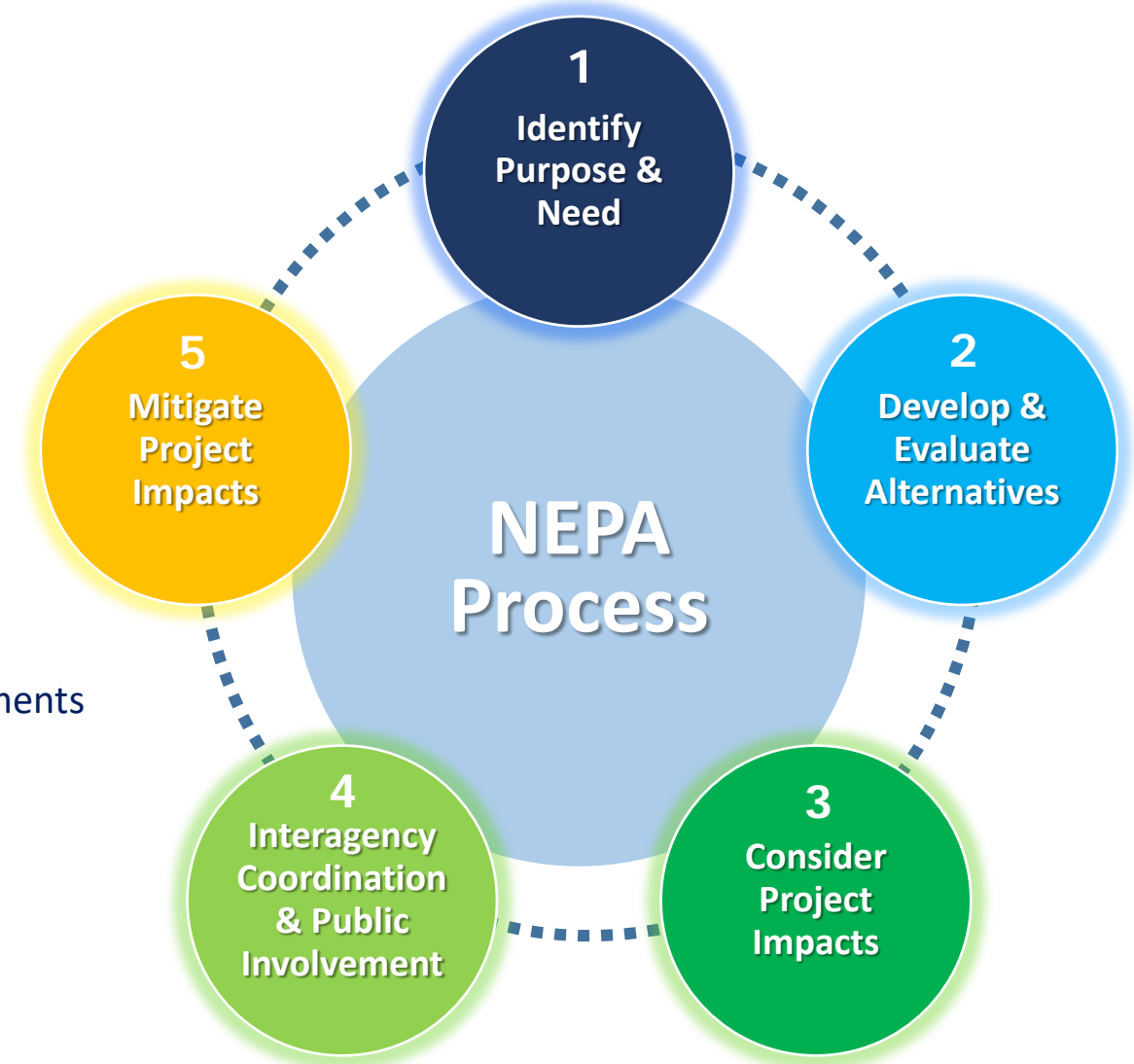
CAC Engagement

Meet approximately 4 times throughout the study



National Environmental Policy Act (NEPA)

- Define Purpose & Need
 - Why is a project needed?
- Develop and Evaluate Alternatives
 - Reasonable solutions based on purpose and need
- Consider Project Impacts
 - Environmental, Social, & Economic Effects
- Interagency Coordination & Public Involvement
 - Federal, state, and local partners, as well as Tribal governments
 - Opportunities to meaningfully participate and comment
- Mitigate Unavoidable Impacts
 - Primary focus is on avoidance and minimization



Environmental Considerations

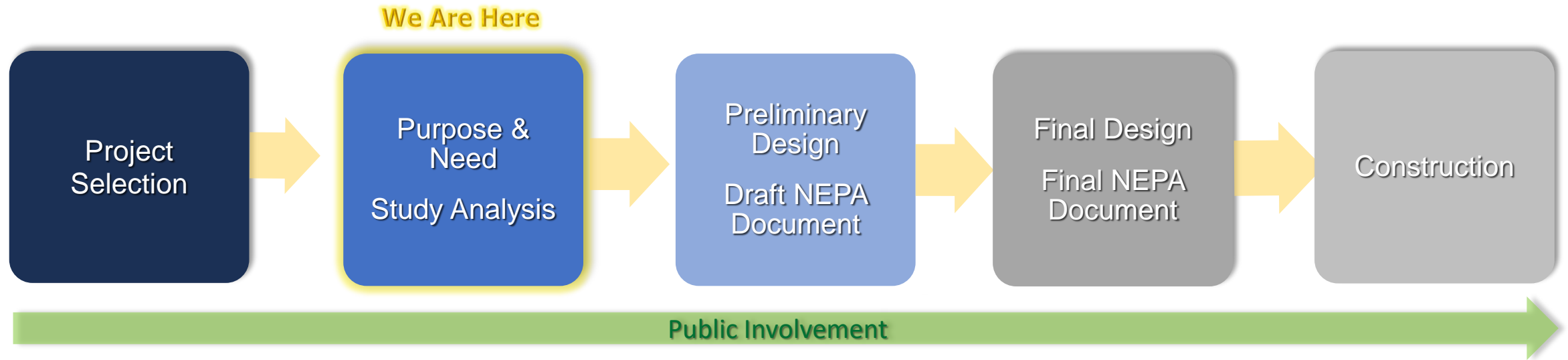


Resources Evaluated during NEPA Process:

- Streams, Wetlands & Other Waters
- Floodplains
- Endangered & Threatened Species
- Cultural Resources
- Parks, Trails & Recreational Lands
- Air Quality
- Right-of-Way/Relocations
- Hazardous Materials
- Noise
- Permits
- Community Impacts
- Environmental Justice (EJ)
- Public Involvement
- Mitigation

Project Development Process

Environmental Document – Classification currently undetermined



Summer 2021

Field Data Collection
Study Kickoff (CAC/VPIM)
Finalize Purpose & Need

Fall 2021/22

Environmental Investigation
Alternatives Analysis

2022

Begin Preliminary Design

2022/23

Draft NEPA Document

Dates TBD

Final NEPA Document
Public Hearing
Final Design

Dates TBD

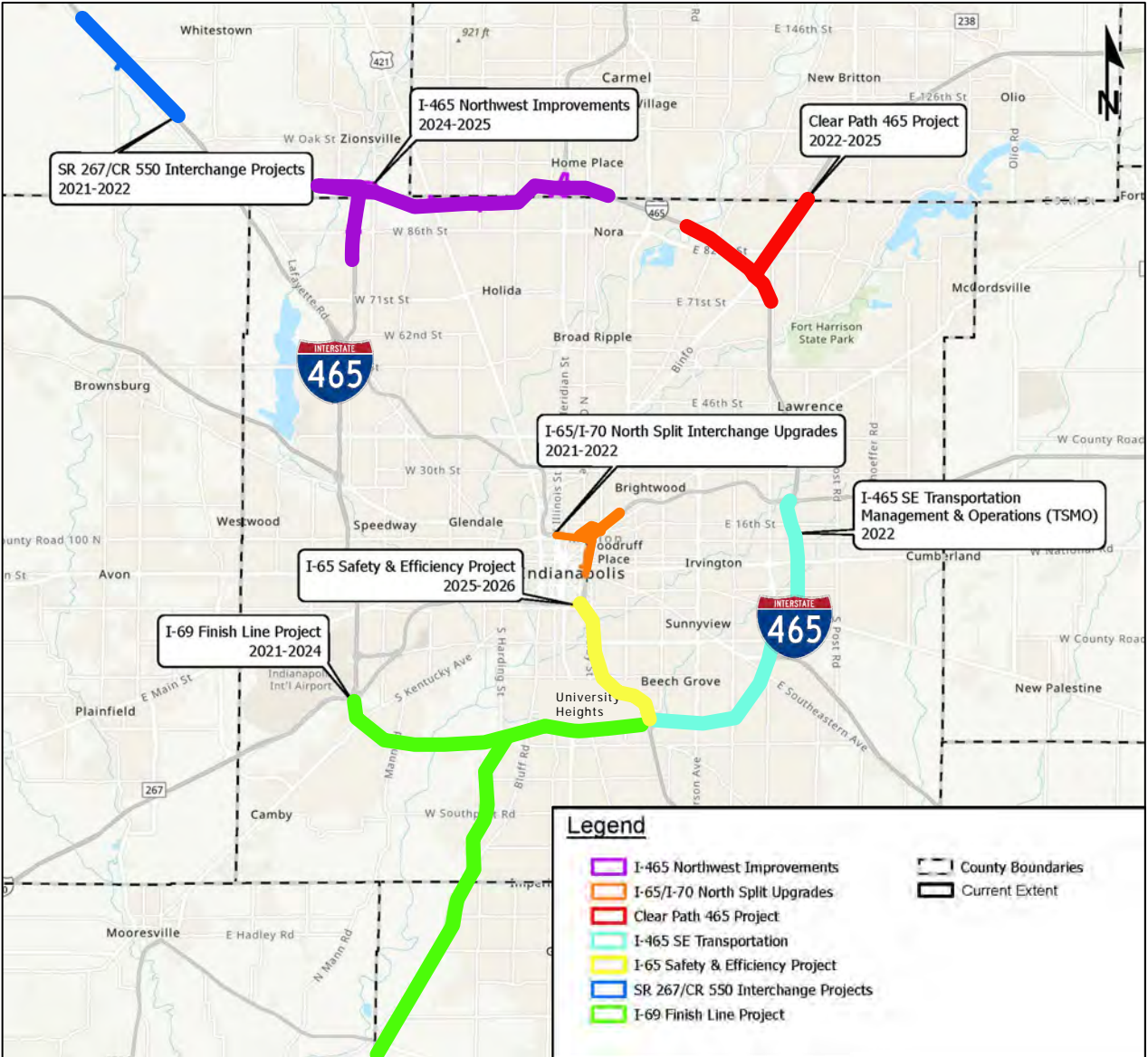
Award Contract(s)

Regional Projects Overview



I-465 Northwest Improvements project is one of seven critical infrastructure projects planned for central Indiana

-  SR 267/CR 550 Interchange (2021-2022)
-  I-465 Northwest Improvements (2024-2025)
-  Clear Path I-465 Project (2022-2025)
-  North Split Interchange Reconstruction (2021-2022)
-  I-465 SE Transportation Management & Operations (TSMO) (2022)
-  I-65 Safety & Efficiency Project (2025-2026)
-  I-69 Finish Line Project (2021-2024)



Study Area



Project Quick Facts

- 8.0 miles along I-465
- 0.5 miles along I-865
- 2.0 miles along US 31
- 3 Interchanges
 - I-465/865
 - US 421
 - US 31
- 3 Counties
 - Boone
 - Hamilton
 - Marion
- 3 Cities
 - Carmel
 - Indianapolis
 - Zionsville



Project Purpose & Need

Project will address 4 key issues:

- Traffic Operations & Congestion
- Recurring Safety Concerns
- Deteriorated Bridges
- Undesirable Geometry



Project Need – Traffic Operations & Congestion



- **Level of Service (LOS)**

- Uses “grades” on a letter scale - A (best) to F (worst)
- Relates to roadway operations **not** the physical condition of the roadway

- **Current & Future LOS Conditions**

- **Current:** Numerous locations operate at LOS D or worse in **one or both** peak periods
- **Future:** By 2045, it is anticipated that most of the corridor will operate at LOS F (worst) during **both** peak periods

Level of Service (LOS)	Description of Operations
A	Traffic is free-flowing with almost complete freedom to maneuver.
B	Traffic is reasonably free-flowing with slightly reduced freedom to maneuver.
C	Traffic is stable, but freedom to maneuver is noticeably restricted.
D	Traffic flow is stable but freedom to maneuver is more noticeably restricted. Small incidents result in reduced speeds and backups (queuing).
E	Traffic is unstable with reduced speeds and no gaps between vehicles. Small incidents cause major queuing.
F	Traffic flow has broken down. Traffic volumes are high with long queues and stop-and-go conditions.



Minimum target for the I-465 Northwest Improvements Project is LOS D with LOS C desired

Project Need – Traffic Operations & Congestion



I-465 Mainline Level of Service Summary – Current vs Future Traffic Volumes

Northbound to Eastbound I-465 Mainline Movements		Level of Service (LOS)			
		Base Year (2020)		Design Year (2045)	
		A M	P M	A M	P M
Location	# of Existing Lanes	A M	P M	A M	P M
Between 86 th St & I-865 (weave)	3	C	D	E	E
Inside I-865 Interchange	2	E	E	F	F
Between I-865 & US 421	3	D	D	F	F
Exit to US 421	1	D	D	F	F
Inside US 421 Interchange	3	C	C	F	E
Entrance from US 421	3	D	D	F	F
Between US 421 & US 31	3	D	D	F	F
Inside US 31 Interchange	3	C	C	D	D

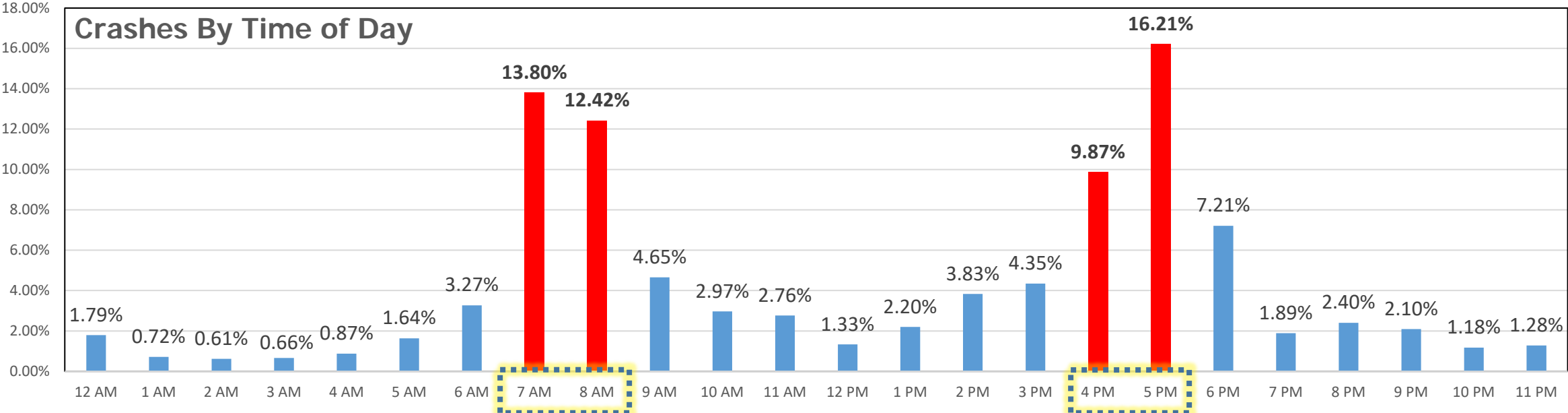
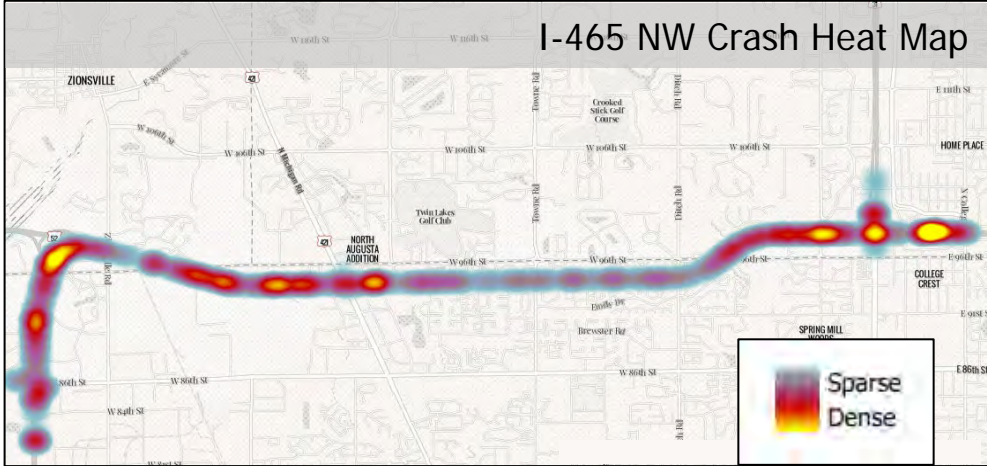
Westbound to Southbound I-465 Mainline Movements		Level of Service (LOS)			
		Base Year (2020)		Design Year (2045)	
		A M	P M	A M	P M
Location	# of Existing Lanes	A M	P M	A M	P M
Inside US 31 Interchange	3	C	C	D	D
Entrance from US 31	1	D	D	F	F
US 31 to US 421	3	D	D	F	F
Exit to US 421	1	E	D	F	F
Inside US 421 Interchange	3	C	C	D	E
Between US 421 & I-865	3	E	F	F	F
Inside I-865 Interchange	2	E	E	F	F
Between I-865 & 86 th Street	3	C	C	D	D

Project Need – Recurring Safety Issues



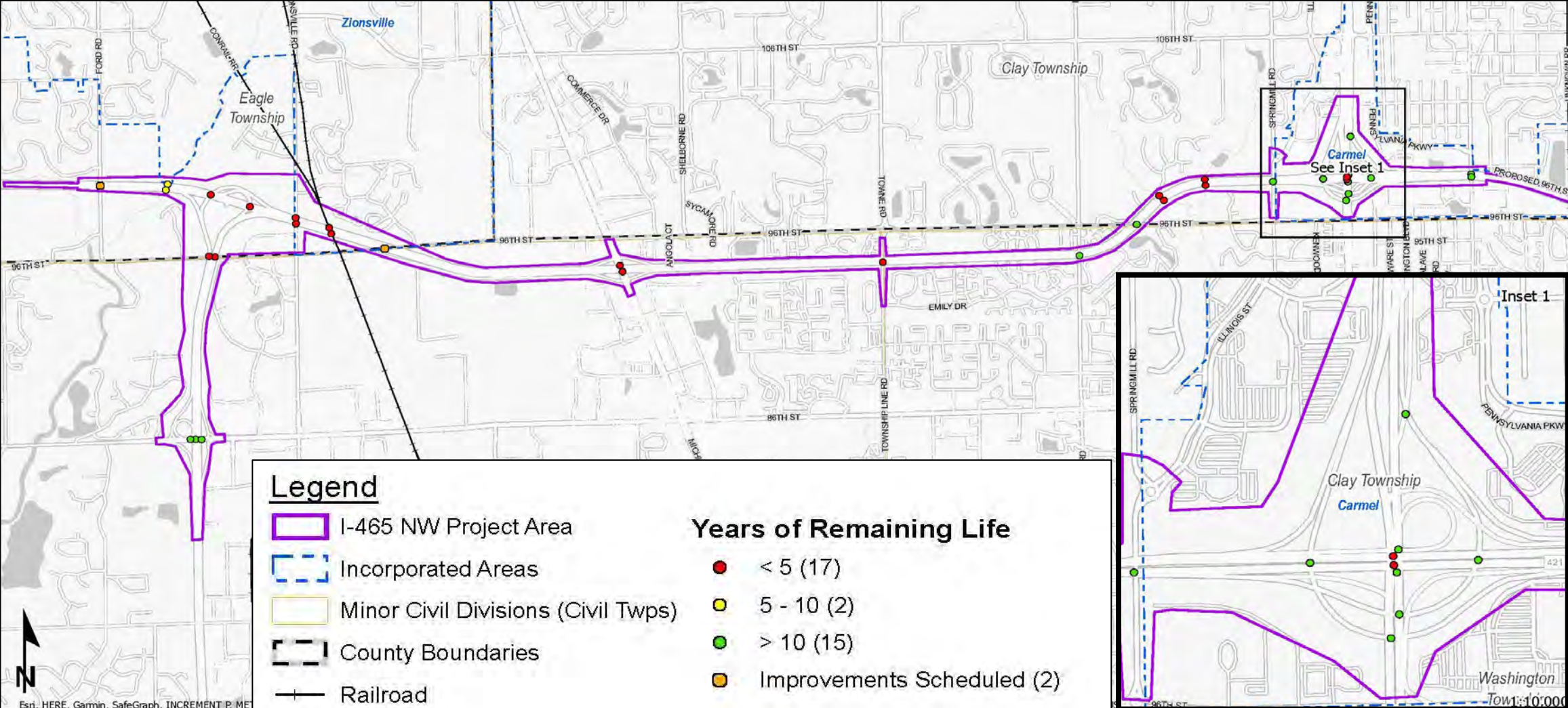
- **I-465 from W. 86th Street to College Avenue**

- 2017–2019: 1,900+ reported crashes (~2/day)
- 1,249 rear-end crashes (approx. 64%)
- 309 side-swipe crashes (approx. 16%)



Project Need – Deteriorating Bridges

Bridges: 17 of 36 have less than 5 years of service life remaining - (47%)



Project Need – Undesirable Geometric Design

- **NB I-465 to WB I-865 Ramp**

- Left-hand exit from NB I-465



- **I-465/I-865 Interchange**

- Right-hand exit for WB to SB I-465 mainline
- Left-hand entrance for EB I-465 to EB I-865



Alternative Analysis

Objectively compares and contrasts each concept to form a single recommended alternative

Evaluation Criteria includes:

- Traffic Operations
- Safety
- Right of Way Impacts
- Geometry & Driver Expectancy
- Constructability
- Long Term Maintenance
- Utility & Pipeline Impacts
- Environmental Impacts
- Evaluate Construction Costs

No-Build vs Build Alternatives:

- No-Build (do nothing) Alternative = No improvements proposed, only maintenance & preservation. The No-Build is evaluated per the purpose and need.
- Build Alternative = potential improvements that enhance the corridor beyond maintenance and preservation

Alternatives Evaluated



I-465 Mainline

- 8 concepts evaluated, 6 dismissed, 2 advanced for further consideration

I-465/I-865 Interchange

- 7 concepts evaluated, 2 dismissed, 5 advanced for further consideration

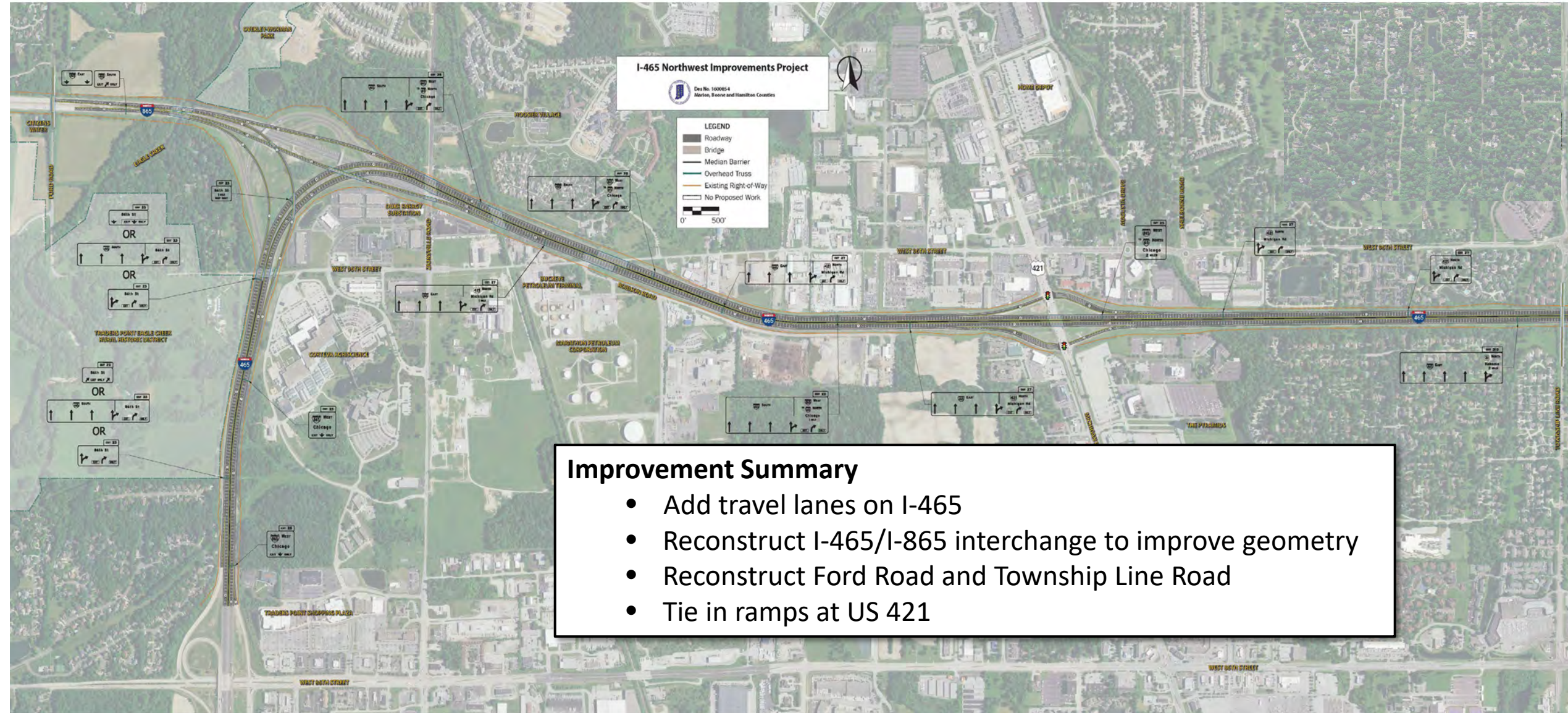
I-465/US 421 Interchange

- Concepts currently under development

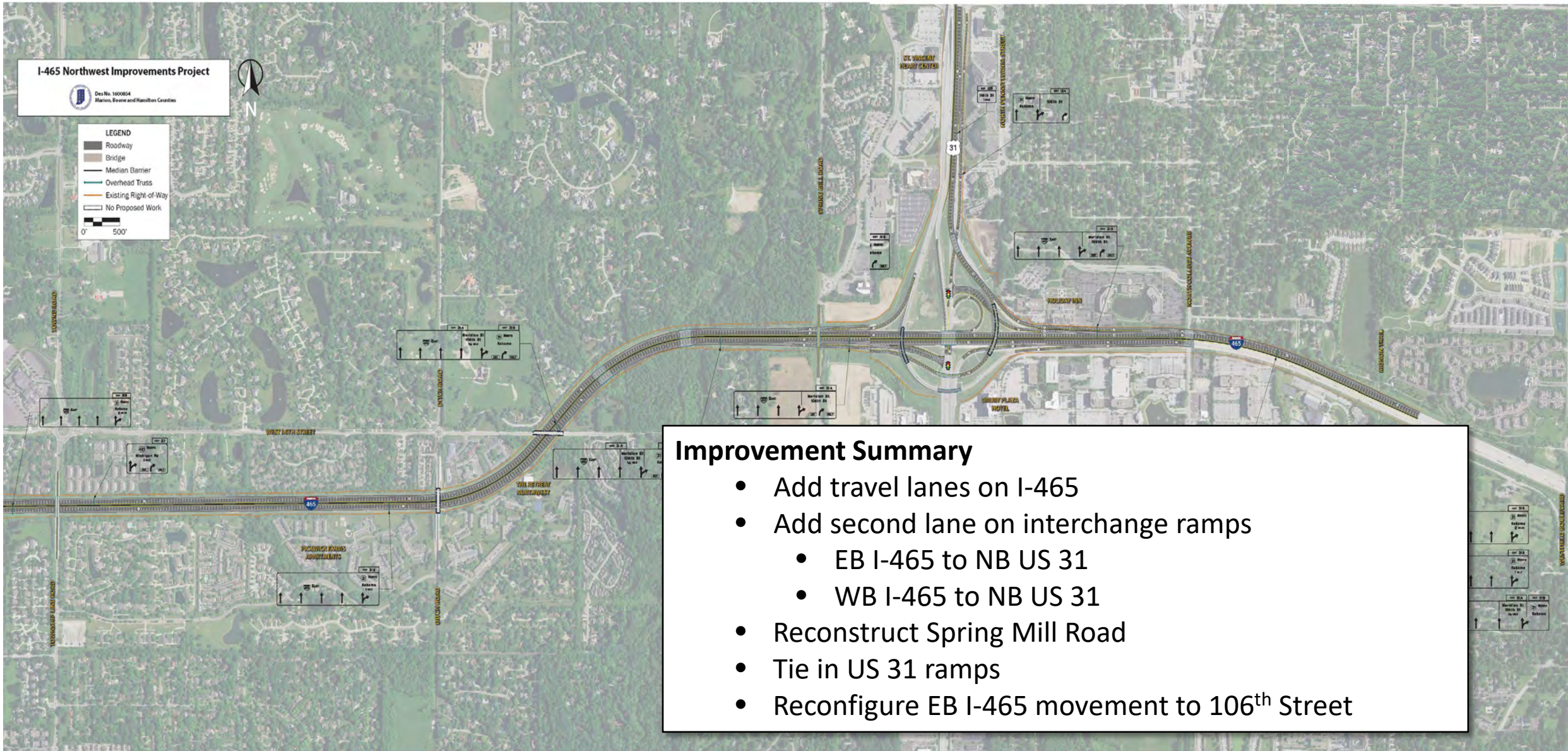
I-465/US 31 Interchange

- 11 concepts evaluated, 9 dismissed, 2 advanced for further consideration

Proposed Improvements



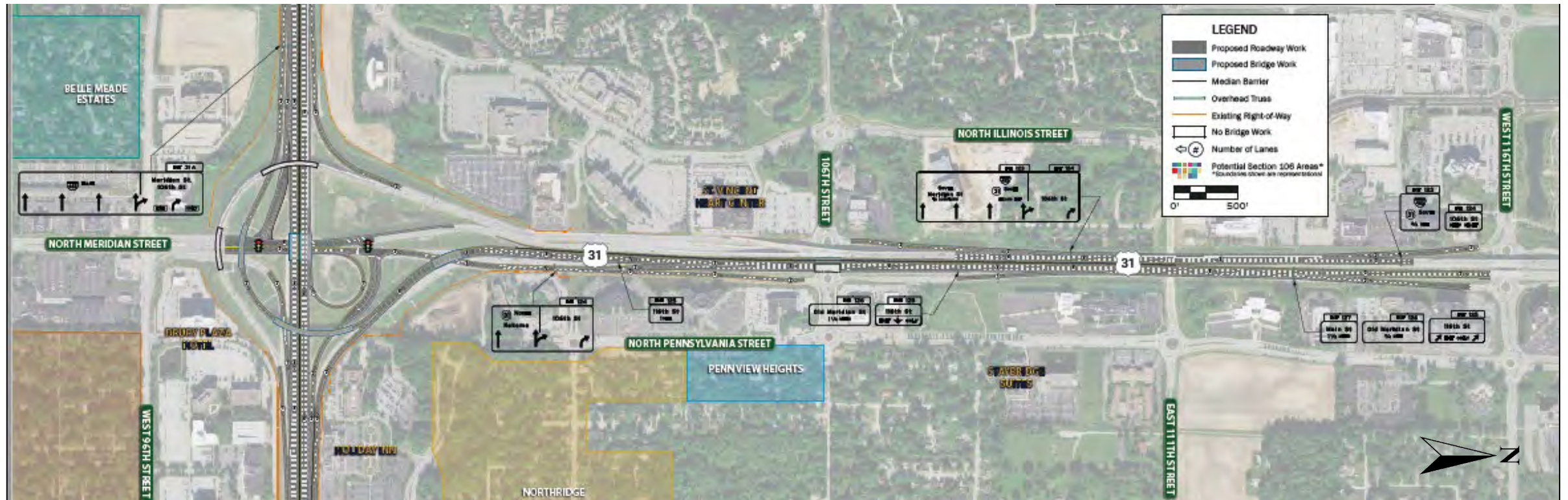
Proposed Improvements



US 31 Interchange

Improvement Summary

- Drop two lanes on NB US 31
- Realign North Meridian Street
- Add one SB lane on US 31 between 116th Street and 106th Street



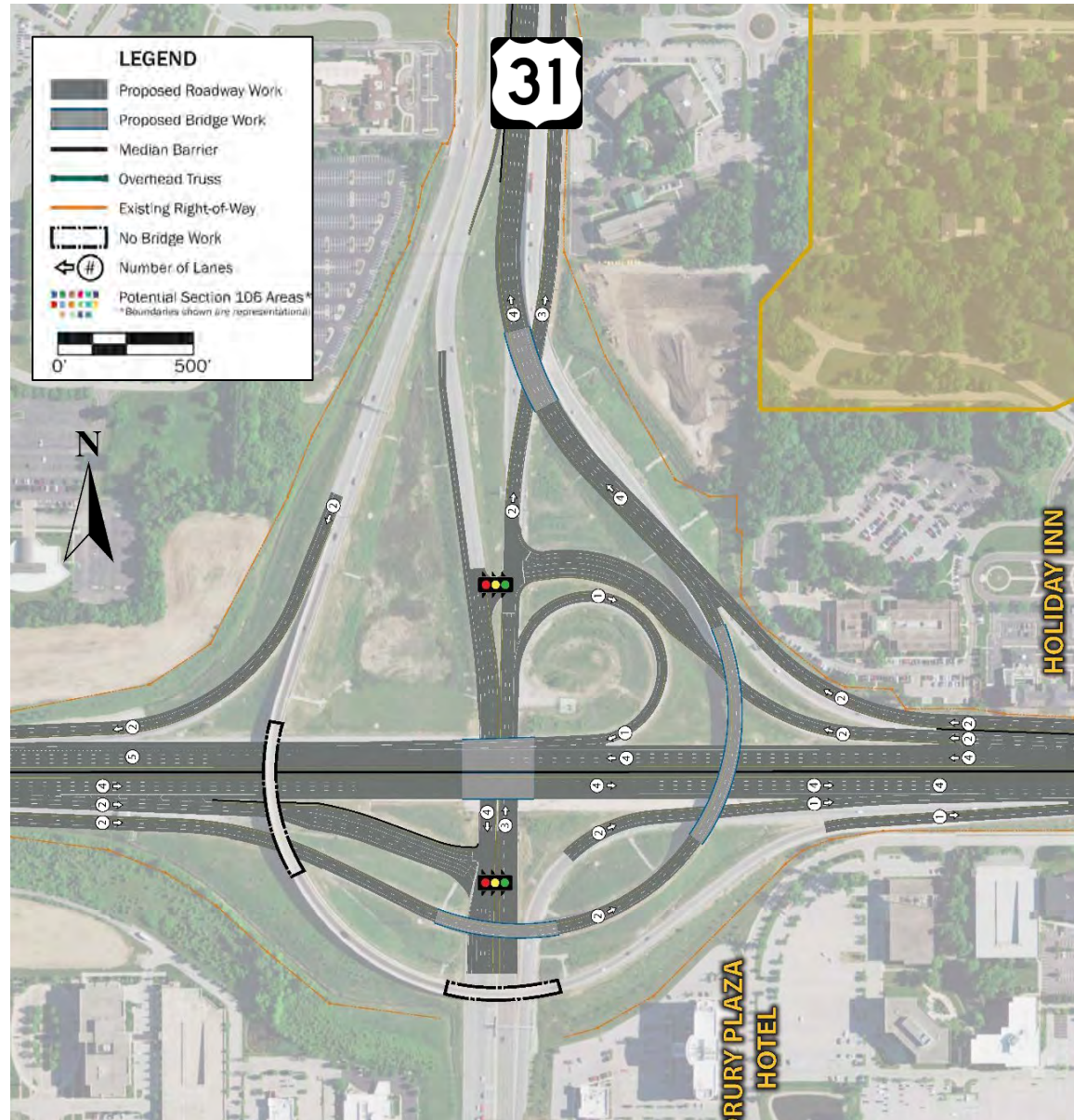
I-465/I-865 Interchange



I-465/US 421 Interchange



I-465/US 31 Interchange



We Need Your Input On....

- Corridor issues
- Community needs
- Unidentified cultural & sensitive resources
- Unidentified underserved populations
- CAC representation



Please provide your input to
Alex Lee
by November 4, 2022



Please mention "I-465 Northwest" in your correspondence

Contact Information



Jonathan Wallace, PMP
INDOT Project Manager
jwallace2@indot.in.gov



Mark Perron, P.E.
Consultant Project Manager
Mark.Perron@parsons.com
317-616-1025



Adin McCann, P.E.
Environmental Lead
amccann@hntb.com
317-917-5325



Alex Lee, AICP
Public Involvement Lead
Alexander.Lee@parsons.com
317-616-1011



Please mention "I-465 Northwest" in your correspondence

Project Information



Project website

www.in.gov/indot/projects/home/i-465-northwest-improvements-project

Project QR Code



Please submit comments to:



855-463-6848

INDOT Customer Service

855-463-6848

INDOT4U.com

Alex Lee, AICP

Public Involvement Lead

Alexander.Lee@parsons.com

Please mention "I-465 Northwest" in your correspondence

Questions & Discussion



Thank You
for Participating!

Please join us!

Two Public Information Sessions are scheduled for
Monday, October 24, 2022
From 1:00-3:00 p.m. and repeated from 5:00-7:00 p.m.