



# Indiana's 2024 303(d) List of Impaired Waters

Presentation to the Indiana Environmental Rules Board  
April 10, 2024

\*\*\*

Paul McMurray, Integrated Report Coordinator  
Office of Water Quality  
Indiana Department of Environmental Management

# Clean Water Act (CWA)

## Section 303(d) List of Impaired Waters

- The “303(d) List” identifies waters found to be not supporting one or more designated uses (impaired)
- Submitted to the U.S. Environmental Protection Agency (U.S. EPA) as part of Indiana’s Integrated Water Monitoring and Assessment Report every two years.
  - Process includes a state-mandated 45-day public comment period (January 31 to March 15, 2024 for this cycle)
  - The Notice of Comment describes changes to the 303(d) List since last submittal and includes IDEM’s Consolidated Assessment and Listing Methodology (CALM)



# Categories in the Consolidated List

- Category 1 — All designated uses have been assessed and are fully supported
- Category 2 — The use has been assessed, it's fully supported, and no other uses are impaired
- Category 3 — Not enough data or information to determine if the use is supported
- Category 4 — **The use is impaired** but a TMDL is not required **or** a TMDL has been completed
- Category 5 — **The use is impaired** and a TMDL is required → **This is the 303(d) List**

# U.S. EPA ATTAINS Database

- IDEM submits its Integrated Report (IR) and 303(d) List through U.S. EPA's Assessment, TMDL Tracking and Implementation System (ATTAINS)
- Online database that automates data management and IR submittals, including the 303(d) List
- For 2024, draft components of the IR have been submitted to ATTAINS for U.S. EPA review
- ATTAINS makes it easier to track and report on high quality waters



# Category 5 (the 303(d) List) at a glance

Total Number of Impairments	Individual Waterbodies Impaired
6,579	4,322

Streams			Lakes		
Number of Impairments	Reaches Impaired (of 14,701)	Miles Impaired (of 63,511)	Number of Impairments	Lakes Impaired (of 1,555)	Acres Impaired (of 130,500)
6,405	4,185	20,880	173	136	56,387



# Top Causes of Stream Impairment

Cause of Impairment	Waterbodies Impaired	Stream Miles Impaired (of 63,511)
<i>Escherichia coli</i> ( <i>E. coli</i> )	2,252	11,952
Biological Integrity	1,518	7,685
Polychlorinated Biphenyls (PCBs) in Fish Tissue	1,210	4,993
Dissolved Oxygen	525	2,921
Nutrients	419	2,227
Mercury in Fish Tissue	123	664



# Summary of Changes

- No big changes in 2024, but going in the right direction:
  - Overall, 69 fewer impairments and 92 fewer waterbodies impaired
  - 104 prior impairments on 91 streams were found to have water quality improvements
- Remaining changes were the result of:
  - Additional review by IDEM for errors in the data
  - Continued TMDL development

# New Selenium Criteria in WQS

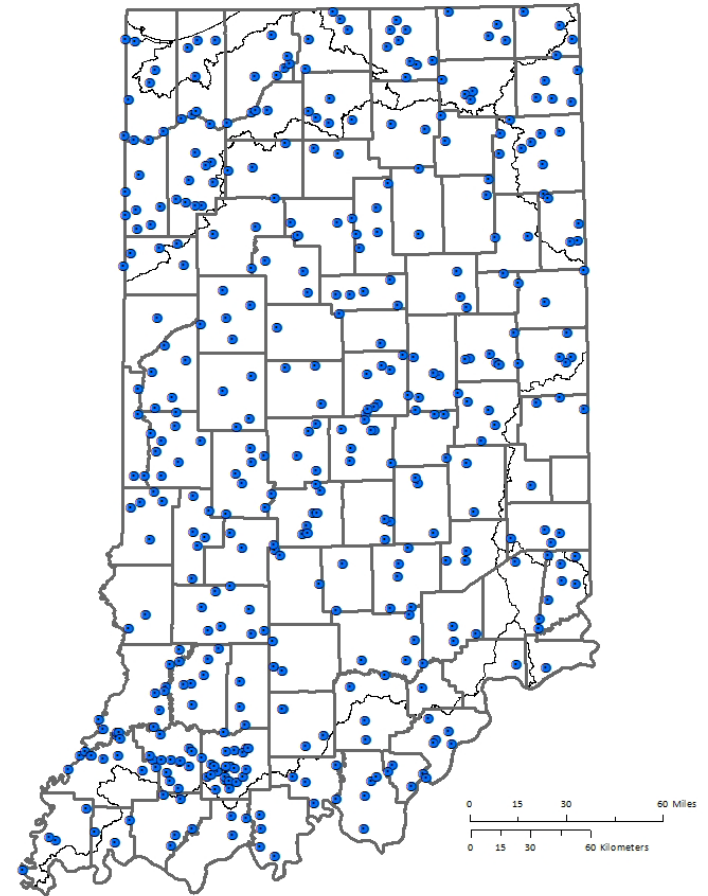
- New Se criteria adopted into Indiana WQS in 2022
- Prioritizes fish tissue (egg/ovary, whole body) over water column data to assess aquatic life use
- Site-specific criteria for downstate waters with Sturgeon/Paddlefish





# Total/Dissolved Metal Conversions

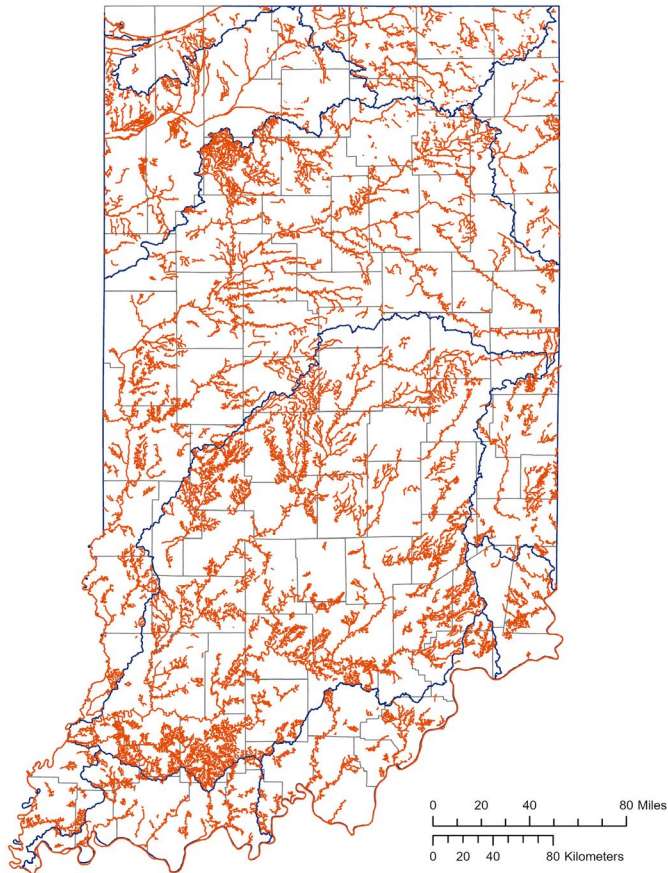
- Conversion formulas developed for Arsenic, Chromium, Copper, Lead, Nickel and Zinc
- Used as screening tool to determine where we may have a dissolved metals impairment
- Should result in fewer additions to 303(d) list



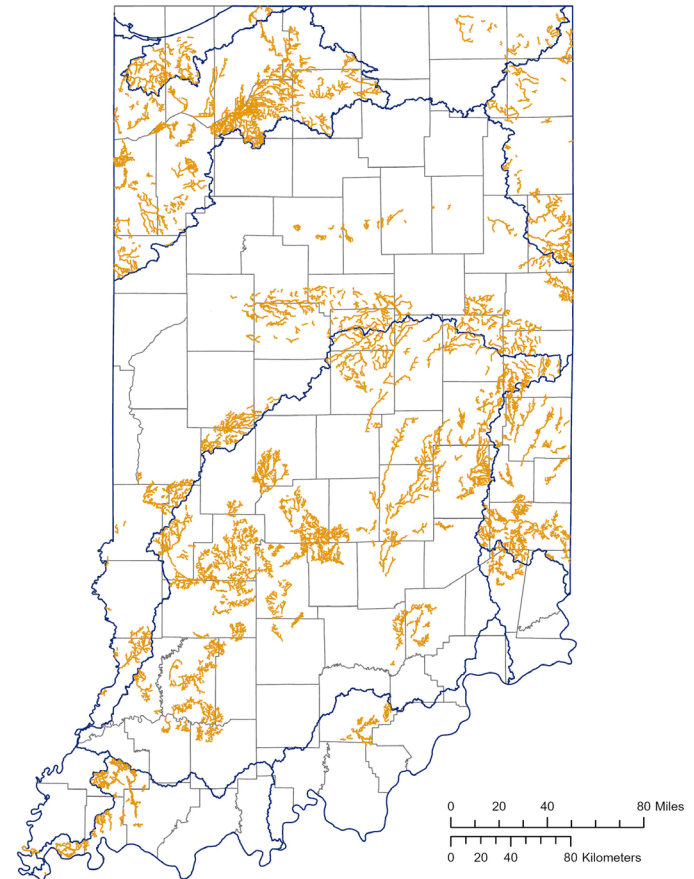
**Sites sampled for Total/Dissolved Metals Conversion Formulas**

# Category 5 and 4a Waterbodies

## Category 5

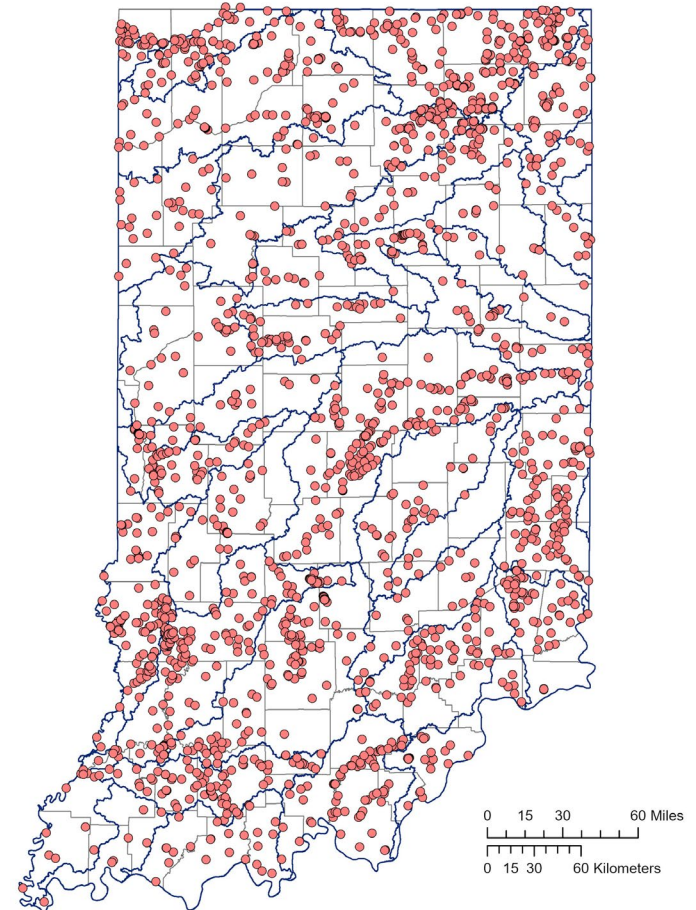


## Category 4a



# Key Take-Aways

- No major changes in the number or types of impairments IDEM is seeing
- Monitoring, assessment, and TMDL development continues
  - 3,030 TMDLs now approved for impaired waters
  - IDEM monitors at about 250-300 sites each year



**IDEM's surface water monitoring sites sampled 2015-2023**



# Where to Find More Information

<https://www.in.gov/idem/nps/watershed-assessment/water-quality-assessments-and-reporting/section-303d-list-of-impaired-waters/>

## Contact

Paul McMurray, Integrated Report Coordinator  
Office of Water Quality, IDEM  
(317) 308-3210  
pmcmurra@idem.IN.gov